

1/12/2022 3:26 PM

SAN LUIS OBISPO SUPERIOR COURT  
BY:   
H. Esquivel, Deputy Clerk

1 ELLISON FOLK (State Bar No. 149232)  
PEARL KAN (State Bar No. 294563)  
2 LAUREN TARPEY (State Bar No. 321775)  
SHUTE, MIHALY & WEINBERGER LLP  
3 396 Hayes Street  
San Francisco, California 94102  
4 Telephone: (415) 552-7272  
Facsimile: (415) 552-5816  
5 Folk@smwlaw.com  
Pkan@smwlaw.com  
6 Ltarpey@smwlaw.com

7 Attorneys for Petitioners  
SLO COUNTY CITIZENS FOR GOOD  
8 GOVERNMENT, INC.; PATRICIA  
GOMEZ, DON MARUSKA; ALLENE  
9 VILLA

10 **SUPERIOR COURT OF THE STATE OF CALIFORNIA**  
11 **COUNTY OF SAN LUIS OBISPO**  
12 **PASO ROBLES BRANCH**

13 SLO COUNTY CITIZENS FOR GOOD  
GOVERNMENT, INC.; PATRICIA  
14 GOMEZ, DON MARUSKA; ALLENE  
VILLA,

15 Petitioners,

16 v.

17 COUNTY OF SAN LUIS OBISPO;  
18 BOARD OF SUPERVISORS OF SAN  
LUIS OBISPO COUNTY and DOES 1-15,

19 Respondents.

20 CLERK-RECORDER OF SAN LUIS  
21 OBISPO COUNTY and DOES  
16-25,

22 Real Parties in Interest.

Case No.22CVP-0007

**VERIFIED PETITION FOR WRIT OF  
MANDATE**

23  
24  
25  
26  
27  
28



1 the next 10 years. True and correct copies of the Ordinance and the Resolution are  
2 incorporated herein as Exhibits “A” and “B” respectively.

3         2.       The Board, on a contentious and partisan 3-2 vote, adopted new County  
4 supervisorial district boundaries in clear violation of state law and in a manner that reflects  
5 a sophisticated and systematic partisan gerrymandering of supervisorial districts using the  
6 techniques of cracking and packing to effect deferral and acceleration of voting rights for  
7 partisan advantage, in the following ways:

8               a.       The new supervisorial districts represent an unequal, unfair, and  
9 discriminatory malapportionment of County residents and voters, particularly in  
10 unincorporated areas of the County, in violation of Elections Code section 21500(a) and  
11 (b), and the State constitution.

12              b.       The new supervisorial districts are drawn in a manner that misapplies,  
13 improperly conflates, and violates mandatory, ranked, prioritized redistricting criteria set  
14 forth in the Elections Code section 21500(c).

15              c.       The new supervisorial district boundaries approved by the Republican  
16 Board majority (“the Board Majority”) are drawn in a manner that supports, indeed  
17 compels, a single reasonable and inescapable conclusion: that the boundaries were drawn  
18 for the prohibited purpose of favoring one political party (the Republican Party) and/or  
19 discriminating against another (the Democratic Party) in violation of Elections Code  
20 section 21500(d).

21              d.       The undeniable and unnecessary effect of the new supervisorial  
22 district boundaries approved by the Board Majority is the unlawful dilution,  
23 deferral/suppression, and/or acceleration of fundamental voting rights (affecting a total of  
24 nearly 100,000 County voters—more than 45% of the citizen voting age population) for  
25 partisan Republican advantage in a near-term election and in future elections over the next  
26 10 years. These impacts include: (1) a sizeable number of County residents (mostly  
27 Democratic-tending) will be “orphaned” by being included in districts where they will not  
28 be represented by an elected supervisor for more than two years; (2) some County

1 residents (mostly Republican-tending) will be entitled to vote twice in the upcoming 2022  
2 elections or will have their vote accelerated from the 2024 election; and (3) the majority of  
3 districts will be reconfigured in a manner that favors Republican candidates in a County  
4 where Democrats represent a plurality of registered voters.

5 e. In adopting the patently partisan Richard Patten Map, the Board failed  
6 to fulfill its legal duty to accept and evaluate evidence in the record and to obtain and  
7 evaluate evidence otherwise readily available to determine whether the district boundaries  
8 being proposed for adoption through the Richard Patten Map complied with the  
9 requirements of Elections Code section 21500(d).

10 3. For these and other reasons described below, Petitioners seek a Writ of  
11 Mandate issued from this Court ordering the Board to set aside the approval of Ordinance  
12 Number 3467, District Map 74786, and all associated approvals including Resolution  
13 2021-311. Petitioners further ask that this Court order the Board to lawfully discharge their  
14 statutory and constitutional duty by adopting a new and valid ordinance and a new and  
15 valid supervisorial district boundary map that complies with State and Federal law. In the  
16 alternative, Petitioners request that the Court invoke and implement the remedial process  
17 prescribed by Elections Code section 21509.

#### 18 **PARTIES**

19 4. Petitioner SLO Citizens is a California 501(c)(4) not-for-profit corporation  
20 with its principal place of business in San Luis Obispo County, California.

21 5. SLO Citizens was created to preserve and protect voting rights in a free, fair,  
22 undiluted, and non-discriminatory manner, and to take appropriate steps, including but not  
23 limited to sponsoring and participating in legal challenges to governmental decisions  
24 considered at odds with its goal.

25 6. SLO Citizens is a non-partisan voluntary organization representing a diverse  
26 cross-section of persons from all corners of the County and of multiple political  
27 persuasions who are routinely engaged in the process of voting in San Luis Obispo County  
28 including but not limited to voting in elections for county supervisors. SLO Citizens does

1 not favor or condone any form of illegal gerrymandering regardless of which political  
2 party may be the perpetrator.

3 7. Many of SLO Citizens supporters and its Board members are taxpayers in  
4 California and pay taxes in San Luis Obispo County and have a strong interest in the way  
5 public funds, including county funds, are expended in connection with the decennial  
6 redistricting process. SLO Citizens, its supporters, and its Board members are directly  
7 affected by the way supervisorial district boundaries are configured, particularly when  
8 radical and otherwise unnecessary changes are made to district boundaries that are not in  
9 accordance with the law and have the impact of deferring, suppressing, accelerating, or  
10 diluting the exercise of their fundamentally significant voting rights for partisan advantage.

11 8. Petitioner Patricia Gomez is a long-time resident of the County of San Luis  
12 Obispo and a Director and Officer of SLO Citizens. Mrs. Gomez participated in the  
13 administrative hearing process by attending public hearings, submitting written comments,  
14 and testifying before the Board of Supervisors. Mrs. Gomez has a beneficial interest in the  
15 litigation because the gerrymandered Supervisor District boundaries adopted by the Board  
16 discriminates against her on the basis of her political affiliation. The 2021 boundary  
17 changes separated Ms. Gomez and other City of San Luis Obispo residents from various  
18 communities of interest historically aligned with the City of San Luis Obispo including  
19 Avila Beach, Pismo Beach, Grover Beach, the SLO Airport, and the SLO County Club,  
20 among others.

21 9. Petitioner Allene Villa is a life-long resident of the County of San Luis  
22 Obispo and at all times alleged in this Petition a resident of the Census Designated  
23 Place/unincorporated area of Oceano. Oceano and Nipomo together have the largest  
24 population of Latino voters in the County outside of the Paso Robles area. Ms. Villa is  
25 deeply knowledgeable about and actively involved in community affairs and currently  
26 serves as the President of the Oceano Advisory Council. She participated in the  
27 administrative hearing process by attending public hearings and testifying before the Board  
28 of Supervisors on more than one occasion. Ms. Villa resides in an area that was

1 unnecessarily cracked *and* packed by the Richard Patten Map; she was expecting to vote in  
2 June 2022 but under the Richard Patten Map she was moved out of District 4 and relocated  
3 into a totally new District 5. This change separated Ms. Villa and other voters in Oceano  
4 from various and communities of interest historically associated with Oceano including  
5 Nipomo, the Oceano Dunes area, and Arroyo Grande. She and all other Oceano voters,  
6 most of whom voted against the Republican incumbent in 2018, would be not be eligible to  
7 vote for supervisor until 2024.

8       10.     Petitioner Don Maruska is a long-time resident of the County of San Luis  
9 Obispo and at all times alleged in this Petition a resident of Los Osos, California. Mr.  
10 Maruska participated in the administrative hearing process by attending public hearings  
11 and testifying before the Board of Supervisors on multiple occasions. Mr. Maruska resides  
12 in an area that was unnecessarily cracked *and* packed by the Richard Patten Map. He was  
13 expecting to vote in June 2022 but under the Richard Patten Map he was cracked out of  
14 District 2 and packed into a totally new District 5. This change separated Mr. Maruska and  
15 other Los Osos residents from various cities and communities of interest historically  
16 associated with Los Osos including the entire north coastal portion of San Luis Obispo  
17 including Morro Bay, Cayucos, and Cambria, as well as a portion of the City of San Luis  
18 Obispo. As evidence of the long-standing North Coast community of interest, the office for  
19 his professional services firm is in the City of Morro Bay, a short drive on the other side of  
20 Morro Bay. With the new District 5, his Los Osos residence would be 30 minutes away  
21 from any other coastal community. He and all other Los Osos voters, who last voted for  
22 supervisor in 2018, would not be eligible to vote for supervisor in the new district until  
23 2024.

24       11.     Petitioners participated in the public hearing process preceding the Board's  
25 adoption of the Ordinance, the Resolution, and the new district boundaries map by  
26 attending hearings, submitting written comments, and making oral comments. Each of the  
27 individual Petitioners resides in what would become a gerrymandered district where their  
28 individual voting rights would in some way be diluted, deferred, or unfairly and unlawfully

1 affected.

2 12. Respondent and Defendant (“Respondent”) San Luis Obispo County is a  
3 political subdivision of the State of California.

4 13. Respondent and Defendant (“Respondent”) San Luis Obispo County Board  
5 of Supervisors is, and at all times herein mentioned was, the duly elected decision-making  
6 body of Respondent County. On December 14, 2021, the Board Majority approved and  
7 adopted the Ordinance, the Resolution, and the new district boundary map challenged in  
8 this Petition.

9 14. The true names and capacities, whether individual, corporate, or otherwise,  
10 of Does 1-15, are unknown to Petitioners who therefore sue said persons or entities by  
11 such fictitious names and will seek leave to amend this Petition when their identities have  
12 been ascertained.

13 15. Real Party-in-Interest San Luis Obispo County Clerk-Recorder, is the duly  
14 appointed and acting public official of the County of San Luis Obispo charged with  
15 overseeing, supervising, and ensuring the full and proper implementation of applicable  
16 rules, regulations, provisions, and timelines associated with the election process in the  
17 County.

18 16. The true names and capacities, whether individual, corporate, or otherwise,  
19 of real parties in interest, Does 16-25, are unknown to Petitioners who therefore sue said  
20 persons or entities by such fictitious names and will seek leave to amend this Petition when  
21 their identities have been ascertained

22 **JURISDICTION AND VENUE**

23 17. This Court has jurisdiction pursuant to Code of Civil Procedure sections  
24 1060-1062.5, 1085, 1094.5, 526(a), and 527(a); Elections Code Sections 21500-21509.

25 18. Venue is proper in Paso Robles Branch of the San Luis Obispo County  
26 Superior Court because the causes of action arose in San Luis Obispo County and  
27 Respondent Board of Supervisors is located in San Luis Obispo County. This litigation  
28 concerns the proper boundaries to be used in the upcoming June 2022 election for District

1 2 which is located in northern San Luis Obispo County and covers the communities of  
2 Cambria, Cayucos, and Atascadero, among others. Likewise, this litigation involves a  
3 challenge to the proposed boundaries of District 1, which covers the area of Paso Robles  
4 and surrounding areas, as well as District 5, which encompasses Santa Margarita, Pozo, the  
5 California Valley and other northern San Luis Obispo regions. The litigation further  
6 challenges the proper boundaries for Districts 4 and 3, with the new boundaries affecting  
7 areas in Morro Bay, Pozo, and other unincorporated areas in northern and southern San  
8 Luis Obispo.

9 19. Petitioners have performed any and all conditions precedent to filing the  
10 instant action and have exhausted any and all available administrative remedies to the  
11 extent possible and required by law. Petitioners, including Board members of SLO  
12 Citizens and its supporters, submitted numerous objections to County's process and  
13 approval of the Richard Patten Map.

14 20. Respondents have taken final agency actions with respect to adopting the  
15 Richard Patten Map. Respondents have a duty to comply with applicable state laws,  
16 including but not limited to Elections Code sections 21500-21509, prior to approving the  
17 approvals at issue in this lawsuit. Petitioners possess no effective remedy to challenge the  
18 approvals at issue in this action other than by means of this lawsuit.

19 21. The issuance of a stay order, temporary restraining order, and preliminary  
20 and permanent injunction in this case is in the public interest and is otherwise necessary  
21 and appropriate pursuant to Code of Civil Procedure sections 526, 527, 1085, and 1094.5  
22 to preserve the status quo and to prevent the unwarranted deferral and suppression of  
23 fundamental, constitutionally protected voting rights. In the absence of injunctive relief,  
24 Respondents will proceed forward with the elections in June 2022 causing irreparable  
25 harm to the rights of County citizens and voters and Petitioners.

26 22. Unless and until Respondents and Real Parties are enjoined and restrained as  
27 herein requested, some Petitioners and significant portions of the County's voting  
28 population will suffer irreparable injury due to the loss, deferral, or suppression of voting



1 rights, none of which can be fully cured after the fact and none of which can be adequately  
2 compensated by money damages.

### 3 **FACTUAL BACKGROUND**

4 23. Petitioners reallege and incorporate by reference the preceding paragraphs in  
5 their entirety.

#### 6 **Overview of the Decennial Redistricting Process in California**

7 24. In 2019, the California Legislature adopted California Elections Code  
8 sections 21500-21509 (also referred to as the “Fair Maps Act”), which was modeled after  
9 Proposition 11’s nonpartisan process for the redistricting of California’s Senate, Assembly,  
10 Congressional and Board of Equalization Districts. The Fair Maps Act aimed to create a  
11 fair, transparent, and non-discriminatory redistricting process that would eliminate  
12 gerrymandering in all forms (i.e., including racial and partisan gerrymandering).

13 25. Under the Fair Maps Act district boundaries must be drawn to assure  
14 substantial equality in population among the districts and to comply with the federal and  
15 state constitutions and the federal Voting Rights Act of 1965.

16 26. Through Elections Code section 21500(c), the Fair Maps Act establishes  
17 mandatory, ranked criteria that govern the creation of supervisorial district boundaries. The  
18 Fair Maps Act requires, to the extent practicable, that district boundaries be drawn to first  
19 maintain the geographic integrity of local neighborhoods and local communities of  
20 interest, and *next*, to the extent practicable, the geographic integrity of cities and census  
21 designated places. Further, the Act prohibits the adoption of new district boundaries for the  
22 purpose of favoring one political party and discriminating against another political party.

23 27. The Fair Maps Act also requires robust outreach, second language and  
24 interpretation accessibility, a transparent process with plentiful opportunities for  
25 meaningful public participation and input, and a minimum number of public meetings after  
26 census data is available and before a final ordinance is adopted.

27 28. The Fair Maps Act provides for a court-controlled process to establish  
28 boundaries in the event an ordinance is not adopted by a prescribed deadline.

1           29.     In addition to the Fair Maps Act, since the first ratification of the California  
2 Constitution in 1849, California voters have been explicitly protected from violations  
3 against “the privilege of free suffrage” and from “all undue influences.” The current  
4 constitution guarantees “free elections” for all voters (Art. II, Sec. 3). Free and fair election  
5 clauses in numerous state constitutions have been recognized by courts as providing  
6 judicial protection against partisan manipulation.

7           30.     Pursuant to Article 1, Section 2 of the U.S. Constitution, the decennial  
8 census process provides the basis for redistricting changes in the voting districts of state  
9 legislators, county boards of supervisors, and city councils. In 2020, the U.S. Census  
10 Bureau conducted the decennial census, extending the deadline for responses through  
11 October 15, 2020 in response to the COVID-19 pandemic. Normally, the Bureau is  
12 required to report final data to the U.S. President on or before December 31<sup>st</sup> of the Census  
13 year and to States and Counties on April 1<sup>st</sup> of the following year. However, due to the  
14 extended timeline to complete the Census count, along with complications arising from the  
15 Bureau’s use of predominantly electronic responses for the first time, San Luis Obispo  
16 County did not receive final, State-adjusted data until September 20, 2021.

17 **Redistricting Terminology**

18           31.     Several terms describe the redistricting process and its impact on voters.  
19 “Map architecture” refers to the way lines or boundaries have been drawn in the past or  
20 may be changed in the future. Map architecture can impact voters in multiple ways. Map  
21 architecture that breaks apart existing communities of interest is referred to as “cracking.”  
22 “Packing” occurs when a map concentrates voters in a district based on characteristics  
23 such as race or political party. Cracking and packing both refer to specific ways of drawing  
24 boundaries with the outcome of elections in mind. Both can be implemented by a party in  
25 power to maximize its electoral chances through gerrymandering. Packing can make  
26 districts less competitive by concentrating voters in ways that move them out of  
27 competitive districts and into “safe” districts. Packing makes surrounding districts less  
28 competitive, which can tip the balance of power. Cracking involves drawing districts in

1 such a way as to divide a concentration of specific types of voters across several districts  
2 such that they are a minority in each one, with no ability to win an election in any of the  
3 districts

4 32. “Vote acceleration” occurs when voters are able to vote earlier than they  
5 would have been able to without redistricting. For example, a voter in a district whose  
6 supervisor would not be up for election until 2024 is moved to a district with a supervisor  
7 up for election in 2022. “Vote deferral” occurs when a voter who would have voted in an  
8 upcoming election is moved to a district with a later election date, e.g., a voter who is  
9 moved from a district with a 2022 election date to one with a 2024 election date.

10 33. A “community of interest” is a contiguous population sharing common social  
11 and economic interests that should be included within a single district for purposes of  
12 effective and fair representation. Examples of such shared interests are those in common to  
13 an urban area, a rural area, an industrial area, or an agricultural area, and those common to  
14 areas in which people share similar living standards, use the same transportation facilities,  
15 have similar work opportunities, or have access to the same media of communication  
16 relevant to the election process. Communities of interest “shall not include relationship  
17 with political parties, incumbents, or political candidates.” Elections Code section 21500,  
18 as adopted in 2019, similarly provides that “A ‘community of interest’ is a population that  
19 shares common social or economic interests that should be included within a single  
20 supervisorial district for purposes of its effective and fair representation.”

21 34. Changes in map architecture not compelled by population change can result  
22 in partisan impacts where it cracks existing communities of interest and packs them into  
23 districts where their votes are diluted. In such circumstances, changes in map architecture  
24 can also have partisan impacts on voters where it disproportionately accelerates the votes  
25 of one political party and defers those of the other party.

26 **The Redistricting Process in San Luis Obispo County**  
27 **Prior Supervisorial Maps**

28 35. The map architecture for the supervisorial district boundaries adopted by the

1 County after the 1990 census, the 2000 census, and 2010 census all reflect considerable  
2 consistency and stability in their mapping of existing neighborhoods and communities of  
3 interest, as well as cities and census designated places. While sizable population increases  
4 for the County required adjustments to district boundaries, the County had never  
5 implemented wholesale changes to any districts prior to 2021. Instead prior maps respected  
6 the boundaries of neighborhoods and communities of interest that have existed and  
7 flourished as such for decades.

8         36. For example, each of district maps created after the 1990, 2000, and 2010  
9 census : (a) combined San Miguel and Templeton in District 1; (b) combined Cambria,  
10 Cayucos, Morro Bay, and Los Osos in District 2; (c) did not combine Atascadero and  
11 Santa Margarita in the same district; (d) had neighborhoods and communities of interest  
12 within the City of San Luis Obispo represented by multiple (at least three) supervisors; (e)  
13 combined the communities of Oceano, Nipomo, and Arroyo Grande in District 4; (f) had at  
14 least part of the City of San Luis Obispo and part of the Cal Poly campus included in  
15 District 5; (g) had the areas southwest of the City of San Luis Obispo near Edna included  
16 in District 5; and (h) combined the North County areas of Santa Margarita and Pozo in  
17 District 5.

18         37. In addition, for the period from at least 1990 until 2021: (a) San Miguel was  
19 never in a district with Cayucos or Cambria; (b) Atascadero was never in a district with  
20 Cambria; (c) Los Osos was never in a district with Oceano; (d) Oceano has never been in a  
21 district that did not include Nipomo; (e) Nipomo has never been in a district that included  
22 Pozo; and (f) no attempt was made to “unify” the entire city of San Luis Obispo into one or  
23 as few districts as possible under the pretext that the Fair Maps Act first and foremost  
24 requires unification of cities to the greatest extent practicable—even at the expense of  
25 dividing or cracking long-established communities of interest.

26         38. Prior to 2021, the County’s redistricting process respected the existence of  
27 established neighborhoods and communities of interest. The generally consistent and  
28 stable map architecture reflected in the 1991, 2001, and 2011 district maps served to make

1 district boundaries easily identifiable and understandable. The prior map architecture also  
2 reflected a reality that even though the partisan makeup of the board has changed with  
3 each redistricting process, all previous approaches before 2021 avoided dramatic or radical  
4 boundary changes, even when real growth in population required that some boundary  
5 changes be made.

6 39. The 2020 Census data, which became available to the County around  
7 September 20, 2021, establishes that the County experienced a minor increase in  
8 population during the last census period (approximately 10,000 additional residents, or a  
9 3.5% increase in population). There was not enough growth either in the County in general  
10 or in any specific district to require the creation and adoption of new district boundaries.

11 **The 2021 Process**

12 40. The County began its most recent redistricting process in January, 2021 with  
13 the creation of a Staff Advisory Committee to oversee the redistricting process and to  
14 participate in the development and presentation of maps and the receipt and handling of  
15 publicly submitted maps for Board consideration.

16 41. In April 2021, the County contracted with Redistricting Partners, an expert  
17 redistricting consulting firm recommended by staff to provide additional assistance and  
18 expertise. While the Board reserved map drawing and map adoption decisions for itself,  
19 responsibility for compliance with public outreach obligations and responsibilities were  
20 delegated to the County Staff Advisory Committee and Redistricting Partners.

21 **The Redistricting Hearings**

22 42. On July 20, 2021 the Board conducted the first official redistricting hearing  
23 to take public comment regarding communities of interest in the County. The matter was  
24 taken up in the afternoon of a mid-week work day. It was the only redistricting hearing that  
25 provided for remote public participation via Zoom or call-in numbers.

26 43. At the July 20, 2021 redistricting hearing, 'the Board took public comment  
27 on the issue of communities of interest from twelve speakers. Seven of the speakers  
28 emphasized the importance of keeping Oceano and Nipomo in District 4. Heidi Harmon,

1 the mayor of the City of San Luis Obispo, presented reasons for continuing the  
2 longstanding historical practice of having the county seat and county’s multi-faceted center  
3 represented by multiple supervisors. Cal Poly Political Science Professor Michael Latner  
4 spoke about the prohibition of vote dilution and the critical need for all maps to provide  
5 sufficient detail and data so they could be fully understood.

6 44. After receipt of the 2020 census data showing a minimal increase in the  
7 County’s population, the County Staff Advisory Committee and Redistricting Partners  
8 prepared initial draft maps for review by the Board and the public.

9 45. These maps were presented at an October 26, 2021 Board hearing—the one  
10 and only meeting on redistricting held outside of day-time business and work hours.

11 46. Two maps presented by the County’s Staff Advisory Committee at the  
12 October 26, 2021 hearing (Map A and Map B) were very similar to the 2011 map. Map A,  
13 in particular, was drawn to be in conformance with existing district boundaries except for  
14 very minor changes needed to align district boundaries with new census block boundaries.  
15 As noted by the lead staff person and Redistricting Partners, due to minimal overall  
16 population growth, the County was not obligated to redraw its 2011 map except to make  
17 these minor adjustments in census blocks. County staff and Redistricting Partners also  
18 explained that either Map A or Map B would be fully legally compliant in terms of  
19 meeting population equalizing/deviation.

20 47. At the October 26, 2021 hearing, the Board was presented with several maps  
21 submitted by members of the public, including a map prepared by private citizen Richard  
22 Patten (the “Richard Patten Map”). Redistricting Partners noted that the map architecture  
23 of the Richard Patten Map differed significantly from that of the other maps, including  
24 Maps A and B and the 2011 Map. The Richard Patten Map was presented in a largely non-  
25 accessible format, contained obvious and serious mis-numbering of districts, and was  
26 essentially void of any meaningful detail about precisely where new boundaries would be.

27 48. Because so little could be understood about the Richard Patten Map at the  
28 October 26, 2021 hearing, the public did not have an effective opportunity to comment on

1 it at that hearing.

2 49. At the October 26, 2021 hearing, the San Luis Obispo Chamber of  
3 Commerce also submitted a map that purportedly was modeled after the 2011 district map.  
4 This map was later revised and became known as the “Chamber 2030 Map.”

5 50. On November 19, 2021 the Board conducted a third official redistricting  
6 hearing to consider the above maps, along with 23 other publicly submitted maps and  
7 public comment regarding the maps. The hearing was held at 9:00 a.m. on a Tuesday  
8 morning.

9 51. At the November 19, 2021 hearing, the Richard Patten Map was presented  
10 for the first time in the recommended Redistricter-R format. Thus, this was the first time  
11 the public had the ability to review the Richard Patten Map in an understandable format.

12 52. The revised SLO Chamber of Commerce map was also submitted (the  
13 “Chamber 2030 Map”). The Chamber 2030 Map shared a number of characteristics with  
14 Map A (which largely reflected the status quo.) Among other things, the Chamber 2030  
15 Map: (a) kept all of the North Coast communities together as had been the case  
16 historically; (b) kept San Miguel, Templeton, and Paso Robles, in District 1; (c) continued  
17 a multiple supervisor presence in the City of San Luis Obispo, (d) moved the Cal Poly  
18 community into District 2, (e) drew districts so that all included an “agricultural” element;  
19 and (f) and honored the historic architecture of District 4 keeping Oceano, Nipomo, and  
20 Arroyo Grande together.

21 53. The majority of written comments and speakers at the November 19 hearing  
22 advocated for the adoption of Maps A or B. However, the Board, by a 3-2 vote, rejected  
23 two separate motions to advance Map A and Map B for final consideration. Instead, the  
24 Board voted, again by a 3-2 margin, to advance only the Richard Patten Map and the  
25 Chamber 2030 Map as two finalists for further consideration.

26 54. The Board also rejected by a 3-2 vote, a motion by Supervisor Gibson to  
27 have Redistricting Partners generate data about how both the Richard Patten Map and the  
28 Chamber 2030 Map would result in partisan impacts on voting rights. During Board

1 deliberations, no meaningful effort was made by any of the Board majority to identify and  
2 articulate the evidence in the record they would rely upon in applying the mandatory,  
3 ranked, prioritized criteria in Section 21500(c) to support the Richard Patten Map. And no  
4 effort of any kind was made to address the growing and uncontroverted evidence  
5 submitted by public commenters showing how the adoption of the Richard Patten Map  
6 reflected a prohibited purpose to gain partisan advantage in violation of Section 21500(d).

7       55.     On Tuesday, November 30, 2021 the Board conducted its fourth official  
8 redistricting hearing to consider the Richard Patten Map and the SLO Chamber 2030 Map.  
9 By a 3-2 vote, the Board Majority selected the Richard Patten Map as the preferred map  
10 and directed staff to make minor changes to that map to fully incorporate the San Miguel  
11 Community Services District (CSD) into District 2.

12       56.     At the November 30, 2021 hearing, attention continued to focus on Fair  
13 Maps Act criteria, particularly around the priority required for communities of interest. In  
14 addition, the public, Redistricting Partners, County Counsel, and two Board members  
15 addressed the prohibition on partisan gerrymandering imposed by Election Code section  
16 21500(d) and the need and authority for the Board to consider data analyzing whether the  
17 proposed map boundaries would have improper partisan impacts under that section.

18       57.     Redistricting Partners reported at the November 30 hearing that the Richard  
19 Patten Map would accelerate 48,622 votes and defer 49,418 votes (total of 98,040). This,  
20 in a County with less than 300,000 people (not all of voting age). By contrast, the Chamber  
21 2030 map would accelerate 9,499 votes and defer 9,833 votes (a total of 19,332.) Because  
22 they did not make radical changes to the 2011 map, neither Map A nor B would result in  
23 significant acceleration or deferral of votes.

24       58.     At the November 30 hearing, the Board rejected by a 3-2 vote, a motion  
25 made by Supervisor Ortiz-Legg for an analysis of the partisan impacts of the Richard  
26 Patten Map and the Chamber 2030 Map, despite advice from County Counsel that the data  
27 and analysis could be considered for Section 21500(d) compliance purposes and despite an  
28 offer from Redistricting Partners to prepare and deliver such an analysis.



1           59.     Although the Board Majority declined to request or consider data regarding  
2 the partisan impacts of either map, members of the public presented evidence that the  
3 Richard Patten Map would have partisan impacts favoring the Republican Party and  
4 discriminating against the Democratic Party. For example, evidence was produced  
5 establishing that the Richard Patten Map had been officially endorsed by the Republican  
6 Party which had also implemented training sessions to provide guidance for written and  
7 verbal messaging to the Board. Michael Latner (Cal Poly Political Science Professor and  
8 redistricting expert) submitted testimony explaining how adoption of the Richard Patten  
9 Map would constitute a clear violation of Section 21500(d)'s prohibition on partisan  
10 redistricting.

11           60.     Notwithstanding this evidence, the Board, by 3-2 vote, decided that the  
12 Richard Patten Map alone would be the map used as the basis for a redistricting ordinance  
13 to be introduced at a meeting scheduled for December 7, 2021.

14           61.     On December 7, 2021 the Board considered the introduction of an ordinance  
15 to amend Chapter 2.60 of the County Code changing supervisorial district boundaries to  
16 reflect the boundaries of the Richard Patten Map. At that hearing members of the public  
17 submitted comments continuing to object to the adoption of the Richard Patten Map.  
18 Nonetheless, by a 3-2 vote, the Board approved the introduction of an ordinance that  
19 would establish new supervisorial district boundaries based on the Richard Patten Map.

20           62.     On December 14, at the 1:30 p.m. afternoon session of a regular Board  
21 meeting, the Board considered Ordinance 3467 and Resolution 2021-311, which would  
22 revise the County's supervisorial district map based on the Richard Patten Map.

23           63.     At the December 14, 2021, final redistricting hearing, Petitioners and  
24 members of the public continued to object orally and in writing to the adoption of the  
25 Richard Patten Map. Among these comments, Cal Poly Political Science Professor  
26 Michael Latner submitted a declaration detailing how the Richard Patten Map would  
27 violate the requirements of the Fair Maps Act and the state and federal constitutions.

28           64.     Although they paid lip service to the Fair Maps Act criteria, the Board

1 members favoring the Richard Patten Map failed to present evidence demonstrating that  
2 the Map complied with Elections Code section 21500. Indeed, Chair Compton suggested  
3 that there’s nothing evil or nefarious about just liking a map because it is the best looking  
4 map. However Supervisor Gibson presented detailed comments demonstrating that the  
5 action contemplated by the Republican Board Majority in adopting the Richard Patten Map  
6 would constitute a violation of both Section 21500(c) and 21500(d). Supervisor Ortiz-Legg  
7 also read into the record a December 6, 2021 letter written on behalf of the Latino Caucus  
8 of California Counties asking for legal intervention from California’s Attorney General  
9 Bonta into apparent gerrymandering efforts unfolding in several counties including the  
10 County of San Luis Obispo.

11 65. On December 14, 2021, again by a 3-2 vote, the Board adopted Ordinance  
12 3467 and amended Resolution 2021-311 to establish new supervisorial district boundaries  
13 for the next 10 years. Respondents made various findings in connection with the adoption  
14 of the Ordinance, which are set forth in the final, amended form of the Resolution, attached  
15 as Exhibit B.

16 66. Respondents’ adoption of the Ordinance on December 14, 2021 was a final  
17 legislative determination that will become effective thirty days thereafter on January 13,  
18 2022.

19 **Concerns About Public Outreach**

20 67. The County’s April 2021 contract with Redistricting Partners indicates that it  
21 would partner with Imprenta Communications to implement a public outreach program  
22 adopted to the “current state of California, impacted by the devastating COVID-19 using a  
23 specially developed set of “New Normal” methods, technologies, and strategies including:  
24 Zoom town halls, redistricting meetings, and workshops; partnerships with businesses to  
25 provide PSA-type messaging; having business leaders, government officials, and local  
26 leadership hosting a special Webinar with live translations in English and Spanish;  
27 Webinars hosted by Latino community leaders and trusted voices, and church outreach  
28 through write-ups, posts or posted materials in church newsletters, social media and

1 websites or announcements during services.

2 68. Throughout the County's administrative process, members of the public  
3 raised concerns orally and in writing that the County had not engaged in the public  
4 outreach required by the Fair Maps Act or County's own contract with Redistricting  
5 Partners.

6 69. For example, at the November 30, 2021 redistricting hearing, which was the  
7 meeting where it was becoming apparent that the Richard Patten Map would likely become  
8 the Board majority's preferred map, residents in the unincorporated Oceano area  
9 challenged the accuracy and adequacy of the outreach efforts reported by staff for that  
10 unincorporated census designated place. The Oceano community has a Latino population  
11 approaching 50%.

12 70. The administrative record is totally void of any evidence that there was any  
13 outreach to the Latino population in Oceano at any time, in any manner, by any person or  
14 organization describing how, under the Richard Patten Map, Oceano and its nearly 50%  
15 Latino population would be moved out of District 4 and into a new District 5 where voters  
16 in Oceano: could not vote in 2022, could not combine their voting power with other voters  
17 in the South County area, would have their votes diluted in the new district, would have  
18 their votes deferred for two years, and would be moved into a new district where, like Los  
19 Osos and Morro Bay, they would have no supervisor directly accountable to them until  
20 2025.

21 71. No County staff nor representative of Redistricting Partners could confirm  
22 that the full outreach program promised by Redistricting Partners and Imprenta was  
23 actually occurring, or more importantly that Latino constituents really and fully understood  
24 the potential voting and representation future that might befall them. Moreover, there is no  
25 indication that any of the attempts at outreach in the form of posting or providing simple  
26 meeting notices through various media outlets provided a full, fair, and transparent  
27 explanation of how adoption of the various proposed maps could have a real-life impact.

28 72. Of the public meetings held during the 2021 redistricting process, only one

1 provided an opportunity for telephonic or Zoom participation, only one was held in the  
2 evening (which was a weekday night), and only three (3) were single agenda item  
3 meetings. The other “hearings” took place as part of regular board weekday meetings (on  
4 Tuesdays), with the agenda item sometimes not being reached until many hours after the  
5 meeting start time.

6 **Partisan Republican Goals Motivated Adoption of the Richard Patten Map.**

7 73. Under the 2020 Census, the Democratic Party in San Luis Obispo County  
8 has an approximately 6,000-7,000 registration advantage over the Republican Party.  
9 Approximately 38% of voters in the County are registered as Democrats; 34% are  
10 registered Republicans; and more than 20% are “unaffiliated.”

11 74. Notwithstanding the Democrats’ advantage in voter registration, Republicans  
12 hold a majority of seats on the Board. Republican Supervisors include John Peschong  
13 (District 1), Lynn Compton (District 4), and Debbie Arnold (District 5). The other  
14 members of the Board are Democratic Supervisors Bruce Gibson (District 2) and Dawn  
15 Ortiz-Legg (District 3).

16 75. Richard Patten is a registered Republican. Around mid-November 2021, if  
17 not before, the Richard Patten Map acquired the status of the official redistricting map of  
18 choice of the Republican Party in San Luis Obispo County.

19 76. The record contains official Republican Party flyers and newsletters  
20 providing information about “redistricting training” at workshops where Mr. Patten would  
21 be present and guidance would be provided about the map and about messaging (i.e., what  
22 to write and what to say and suggested content for emails) to support the Richard Patten  
23 Map at redistricting hearings. The Republican party’s messaging reflects that used by the  
24 Board Majority: to ignore Section 21500(c)(2) and focus solely on “keeping cities whole”  
25 based on the lower ranked criterion in Section 21500(c)(3), all while mistakenly stating  
26 that the Richard Patten Map would keep the City of San Luis Obispo “whole,” which it  
27 does not do.

28 77. The record contains an official Republican Party-generated communication

1 following the redistricting hearing on November 19, 2021 with the messages “We were  
2 successful on November 19” and “Our supervisors” selected two maps.

3 78. Prior to the November 30, 2021 hearing when the Board would be deciding  
4 between the two map finalists, Republican communications (in the record) also laid out  
5 arguments for both why Republicans wanted the Richard Patten Map adopted and the  
6 Chamber 2030 Map rejected.

7 79. Unlike maps prepared and presented by County staff or Redistricting  
8 Partners, no information was ever provided by Richard Patten or anyone authorized to  
9 speak on his behalf about the types of information and data used and relied upon in  
10 drafting, amending, and refining the various versions of the Richard Patten Map.

11 80. The overall effect of the Richard Patten Map is to have the minority  
12 registered political party in the County relocate and pack voters of the Democratic party  
13 into districts that may become relatively safe Democrat districts, while at the same time  
14 strategically breaking up (or “cracking”) communities of interest and accelerating  
15 Republican-tending voters into areas that enhance the long-term chances of entrenching  
16 Republican party control of three districts. A copy of the Richard Patten Map provided to  
17 the Board on December 14, 2021 that shows and compares old district boundaries with  
18 new boundaries established by the Richard Patten Map is attached hereto and incorporated  
19 herein as Exhibit C.

20 81. The partisan effect of the Richard Patten Map is undisputed. Under the  
21 current map in District 2, Democrats make up about 46% of registered voters while  
22 Republicans made up 26%. Under the new map, as a result of cracking apart communities  
23 of interest, Morro Bay and Los Osos, from Cayucos and Cambria, and inserting non-  
24 communities of interest, San Miguel and Atascadero, Democrats would make up 34% of  
25 voters and Republicans 39%, a total flip.

26 82. Likewise, under the prior District 3 map, Democrats made up 42% of voters,  
27 while Republicans made up 29%. Under the Richard Patten Map, by packing Democrats in  
28 District 3 and relocating Republicans to other districts, Democrats make up 49% of voters

1 and Republicans make up 21% of voters.

2       83. Likewise, under the old District 4 boundaries, 35% of voters in the district  
3 were Democrats and 38% were Republicans. Under the new boundaries, 33% of voters in  
4 the district are Democrats, while 40% are Republicans. This is a significant shift with a  
5 distinct partisan advantage to the Republican candidate. Supervisor Compton won re-  
6 election in this District by just 60 votes in her 2018 race against Jimmy Paulding, the same  
7 person running again against Ms. Compton in 2022. And, the community of Oceano,  
8 which will be moved out of her district, is 45% Latino and is heavily Democratic tending  
9 in its voting.

10       84. The Richard Patten Map also splinters communities with Latino populations  
11 in Oceano, both presently in a district with sizable Latino populations, and dilutes their  
12 influence by moving those residents/voters into a district with a significantly different  
13 demographic make-up.

14       85. The partisan nature of the new boundaries is also apparent from changes  
15 made to benefit Republican supervisors and disadvantage Democratic supervisors.

16       86. Supervisor Peschong (District 1) was identified during the proceedings as a  
17 Republican. He was also identified in the proceedings as the principal of a political  
18 consulting firm, Meridian Pacific Strategies, and past consultant for Republican office  
19 holders and candidates. His current term ends in 2024 and he has publicly announced that  
20 he will not seek re-election. He will be able to serve out his current term in the current  
21 district even though parts of that district will be reassigned under the adopted map and  
22 voters in those areas will have an accelerated ability to vote in 2022 after having just voted  
23 in 2020.

24       87. Supervisor Lynn Compton (District 4) was identified during the proceedings  
25 as a Republican. Her current term expires at the end of 2022 and she has announced her  
26 intention to run for re-election against the same opponent she defeated by a mere 60 votes  
27 in 2018. She lost significantly to that opponent in the census designated place of Oceano,  
28 which was part of District 4 under the 2011 map. Under the Richard Patten Map, the

1 district boundaries and partisan make-up of Ms. Compton's district will change  
2 significantly, to her political advantage, for the June 2022 election. Specifically, significant  
3 numbers of Republican-tending voters would be moved into Supervisor Compton's district  
4 from Supervisor Arnold's current district (District 5) and from Edna and Country Club  
5 areas in current District 3. At the same time, significant numbers of Democratic-tending  
6 voters in the Oceano area (where Supervisor Compton fared poorly in 2018) would be  
7 moved out of Supervisor Compton's district and into a newly formed District 5. These  
8 voters would be unable to vote until 2024. By contrast Republican-tending voters in the  
9 Country Club and Edna areas will get to vote in both the special election for Supervisor  
10 Ortiz-Legg in District 3 and the regular election in District 4.

11 88. Supervisor Arnold (District 5) was identified during the proceedings as a  
12 Republican. She previously served as chief of staff for a Republican supervisor. Supervisor  
13 Arnold's current term ends in 2024. Although she has not announced publicly that she will  
14 not run for re-election, under the ordinance and map adopted by the Board Majority,  
15 Supervisor Arnold will not reside in the new District 5 unless she moves from her rural  
16 home in Pozo to the coastal communities near Pismo Beach, Grover Beach, and Oceano  
17 miles away. Nonetheless, certain areas of the district Supervisor Arnold currently  
18 represents would be moved into new districts such that none of the voters in her district  
19 would have their votes deferred but many would have their votes accelerated in new  
20 districts where they could vote either for her political allies or against her political  
21 adversaries in 2022.

22 89. Evidence of results from several past election cycles was entered into the  
23 record establishing how relatively poorly Supervisor Arnold had fared in the San Luis  
24 Obispo precincts in the district. Under the Richard Patten Map, these precincts were  
25 removed from the newly drawn District 4 which clearly favors her Republican ally in her  
26 2022 re-election bid. Support for the Patten Map would also result in sections of the  
27 current District 3 near Edna and the San Luis Obispo Country Club being accelerated into  
28 a newly drawn District 4 where Republican voters could vote twice in 2022: both vote for

1 Republican Lynn Compton in the new District 4 and against Democrat Dawn Ortiz-Legg  
2 in the old District 3.

3         90. Supervisor Gibson (District 2) is a Democrat. His current term expires at the  
4 end of 2022 and he has announced his intention to run for re-election. Under the ordinance  
5 and map adopted by the Board Majority, the district boundaries and partisan make-up for  
6 the district in which Mr. Gibson will be running will change significantly, to his political  
7 disadvantage, for the June 2022 election. A significant number of Republican-tending  
8 voters from Supervisor Peschong’s current District 1 will be moved into Gibson’s new  
9 District 2, where voters who voted for Supervisor Peschong in 2020 would be entitled to  
10 vote against Mr. Gibson in 2022. Moreover, significant numbers of Democrat-tending  
11 voters in Mr. Gibson’s current district will be cracked out of the district and they will not  
12 be able to vote for him in 2022 and will not be able to vote for anyone until 2024.  
13 Specifically, under the Richard Patten Map, Los Osos and Morro Bay, two of the  
14 communities that historically have been included in the “North Coast” District 2, would be  
15 moved into two new districts (3 and 5) where voters would not be able to vote in 2022,  
16 would not be able to vote until 2024, and in the intervening two years would be  
17 “orphaned” and not have a supervisor directly accountable to them—regardless of party.

18         91. The population allocation in the new districts will also disproportionately  
19 benefit Republican supervisors and disadvantage Democratic supervisors. For example, the  
20 new District 4, which has a Republican majority, will contain approximately 38,000 voters  
21 in the unincorporated area. By contrast, the new District 3, which is largely Democratic  
22 and comprises much of the City of San Luis of Obispo and all of the City Morro Bay, will  
23 have fewer than 4,000 voters in the unincorporated County.

24         92. With just one exception, every single vote on matters relating to the 2021  
25 redistricting process has been a 3-2 vote favoring the partisan position of the Republican  
26 majority on the Board.

27         93. The one lone exception was a 4-1 vote on November 19, 2021, when  
28 Supervisor Gibson joined with the Board Majority for the sole stated purpose of ensuring



1 that there would be at least one legally compliant map (i.e., the Chamber 2030 Map) that  
2 would be considered as one of two final maps.

3 94. When asked directly by members of the Board whether Redistricting  
4 Partners was aware of any other California county district map in 2021 where the map  
5 architecture was as radically different from past maps as the Richard Patten Map in San  
6 Luis Obispo County, the only example the consultant could think of was Butte County,  
7 where fires essentially wiped out an entire city and new population changes compelled  
8 major changes to district boundaries.

9 **FIRST CAUSE OF ACTION**  
10 **PETITION FOR WRIT OF MANDATE AGAINST ALL PARTIES**  
11 **(Violations Of The California Elections Code**  
12 **And California Constitution)**

13 95. Petitioners hereby refer to and incorporate by reference paragraphs 1 through  
14 94 as though fully set forth herein.

15 96. The Fair Maps Act (Cal. Elec. Code § 21500 et seq.) sets forth clear  
16 mandatory, criteria the Board is required to follow when modifying Supervisor District  
17 boundaries. Pursuant to Elections Code section 21500(a), districts must be “substantially  
18 equal in population” based on the total population of residents of the County. In addition,  
19 pursuant to Elections Code section 21500(c) the Board shall adopt supervisorial district  
20 boundaries that are easily identifiable and understandable by residents and, to the extent  
21 practicable, meet the following criteria set forth in order of priority:

- 22 a. are geographically contiguous.
- 23 b. respect the geographic integrity of any local neighborhood or local  
24 community of interest; and
- 25 c. respect the geographic integrity of a city or census designated place.

26 97. Elections Code section 21500 (d) prohibits the Board from adopting  
27 supervisorial district boundaries for the purpose of favoring or discriminating against a  
28 political party.

98. Elections Code section 21507 and 21508 prescribe mandatory public

1 outreach and require the Board to encourage residents, including those in underrepresented  
2 and non-English speaking communities, to participate in the redistricting public process.

3         99.     At all times herein mentioned, Respondents were under a mandatory duty to  
4 fulfill their legal obligations described above in a good faith, non-arbitrary, manner.  
5 Despite this, Respondents failed to proceed in a manner required by law and failed to carry  
6 out their mandatory obligations with respect to State law. By certifying Ordinance Number  
7 3467 and all associated approvals, including Resolution 2021-311 and its various official  
8 findings, Respondents abused their discretion, failed to proceed in a manner required by  
9 law, acted without substantial evidence, and acted in an arbitrary and capricious manner  
10 for the following non-inclusive list of reasons:

11             a.     The supervisorial district boundaries result in serious  
12 malapportionment of the County population in unincorporated areas, seriously  
13 jeopardizing and compromising fair, equal, and effective representation.

14             b.     The supervisorial district boundaries do not respect and maintain the  
15 geographic integrity of existing, long-established, and long-recognized local  
16 neighborhoods and local communities of interest in the ranked, prioritized manner that  
17 would be consistent with the definition of communities of interest in the Fair Maps Act  
18 and in Article XXI, Sec. 2 of the State Constitution. (Elec. Code § 21500(c)(2).)

19             c.     The supervisorial district boundaries are wrongly based on an  
20 assumption that the highest ranked and prioritized criteria for drawing district boundaries  
21 is the protection, preservation, unification, and “wholeness” of cities—to the greatest  
22 degree possible—regardless of the adverse consequences that may flow from that unlawful  
23 assumption to communities of interest and neighborhoods with statutorily ranked priority.

24             d.     Adoption of the Richard Patten Map with its deferral and/or  
25 acceleration of approximately 100,000 county voters (more than 45% of the citizen voting  
26 age population ) and the deliberate relocation of voters to favor the Republican Party  
27 violates the prohibition in Elections Code section 21500(d) on favoring one political party  
28 and discriminating against another.

1 e. Respondents knowingly, intentionally, and improperly excluded  
2 relevant evidence that prevented them from fulfilling their legal duty to assess and  
3 determine, either from data and analysis in the record or from data and analysis that could  
4 have been made available and was offered to them, whether the district boundary changes  
5 being considered reflected a wrongful purpose to favor one political party and discriminate  
6 against another political party.

7 f. Respondents failed to comply with the public engagement  
8 requirements of Elections Code sections 21507 and 21508.

9 100. The actions detailed above also demonstrate that the County violated the free  
10 and fair elections clause of the California Constitution (Art. II, Sec. 3).

11 101. Petitioners are informed and believe and thereon allege that, unless enjoined  
12 by this Court, Respondents and Real Party-in-Interest will proceed with elections of  
13 County supervisors based on these illegal maps, which will have the effect of some voters  
14 being disenfranchised, some voters being improperly divided from others in the same  
15 neighborhoods and communities of interest, and other voters not being able to vote for the  
16 supervisor who lives in their district. Further, Petitioners are informed and believe that the  
17 Board Majority are contemplating elections in 2022 whereby *both* the old and new  
18 boundaries will be used, which will enable some voters to vote twice in a supervisorial  
19 election, while disallowing thousands of other voters who could have voted in 2022 from  
20 being able to vote at all.

21 102. By reason of the foregoing, Respondents violated the Fair Maps Act and  
22 California Constitution when they certified Ordinance Number 3467 and all associated  
23 approvals, maps and documents despite the serious defects and deficiencies described  
24 above.

25 **PRAYER FOR RELIEF**

26 WHEREFORE, Petitioners pray for judgment as follows:

27 1. For a finding that Respondents violated California's Fair Maps Act and the  
28 California Constitution and alternative and peremptory writs of mandate directing the

1 County to vacate and set aside its approval adoption of Ordinance Number 3467, amending  
2 County Code of Regulations 2.60 (Resolution number 2021-311), and creating the new  
3 supervisorial district boundaries challenged in this litigation (e.g., Map Number 74786).

4 2. For a stay, temporary restraining order, and preliminary and permanent  
5 injunction, restraining and enjoining Respondents and Real Parties and their agents,  
6 officers, employees, and all those working in concert with them, from preparing, planning,  
7 taking, implementing, approving or relying on any action based on the challenged  
8 Ordinance and new until such time as Respondents comply with the Writ of Mandate.

9 3. Petitioners request that this Court exercise its jurisdiction under Elections  
10 Code section 21509 (a) and California law to adopt a map that complies with the  
11 requirements of state and federal law.

12 4. For this Court to retain jurisdiction until the Writ of Mandate and other  
13 orders of the Court have been complied with fully, and such compliance has been  
14 approved by the Court.


15 5. For an award of reasonable attorney's fees and expenses pursuant to Code of  
16 Civil Procedure Section 1021.5, Government Code Section 800, and Elections Code  
17 Section 21509 and any other applicable provision of law.

18 6. For such other and further relief as the Court deems just and proper.

19 DATED: January 12, 2022

SHUTE, MIHALY & WEINBERGER LLP

20  
21  
22  
23  
24  
25  
26  
27  
28

By:   
\_\_\_\_\_  
ELLISON FOLK  
PEARL KAN  
LAUREN TARPEY

Attorneys for Petitioners  
SLO COUNTY CITIZENS FOR GOOD  
GOVERNMENT. INC.: PATRICIA GOMEZ

1453854.5

1  
2  
3  
4  
5  
6  
7  
8  
9  
10  
11  
12  
13  
14  
15  
16  
17  
18  
19  
20  
21  
22  
23  
24  
25  
26  
27  
28

**VERIFICATION**

I, Patricia Gomez, have read the foregoing Verified Petition for Writ of Mandate and Complaint for Declaratory and Injunctive Relief and know its contents.

I am a party to this action. The matters stated in the foregoing document are true of my own knowledge except as to those matters which are stated on information and belief, and as to those matters I believe them to be true.

I declare under penalty of perjury under the laws of the State of California that the foregoing is true and correct.

Executed on January 12 2022, at San Luis Obispo, California.

PATRICIA GOMEZ  
Print Name of Signatory

Patricia Gomez  
Signature

# **EXHIBIT A**

**ORDINANCE NO. 3467**

**AN ORDINANCE AMENDING CHAPTER 2.60 OF THE COUNTY CODE CHANGING SUPERVISORIAL DISTRICT BOUNDARIES**

The Board of Supervisors of the County of San Luis Obispo, State of California, ordains as follows:

**SECTION 1:** Chapter 2.60 of the County Code shall be amended to read as follows:

**Section 2.60.010 First supervisorial district.** The first supervisorial district shall be all that territory in the county included within the following described boundaries comprised of the following 2020 U.S. census blocks:

~~Beginning at the southeast corner of Section 35 of Township 28 South, Range 18 East M.D.M., on the Seventh Standard Parallel South, also being a point on the east boundary of the County of San Luis Obispo as defined in Section 23140 of the Government Code; thence, leaving said county boundary west along said Seventh Standard Parallel South a distance of 15 miles more or less to the northeast corner of Section 5, Township 29 South, Range 16 East; thence south one mile to the southeast corner of said Section 5; thence west 4800 feet more or less along the south line of Section 5 to State Route 58; thence northwesterly along State Route 58 five miles more or less to the intersection with the west line of Section 27, Township 28 South, Range 15 East; thence north 4.5 miles more or less to the northwest corner of Section 3 of said Township; thence west 2.5 miles more or less to the intersection with Shedd Canyon Road; thence, northwesterly along Shedd Canyon Road 4.0 miles more or less to the intersection with State Route 41; thence, westerly and southwesterly along State Route 41 a distance of 3.0 miles more or less to the intersection with the south line of Section 16, Township 27 South, Range 14 East; thence west to the southwest corner of said Section 16; thence north to the northeast corner of the south one half of Section 8 of said Township; thence west 1.0 mile to the northwest corner of said south one half of said Section 8; thence north 0.5 mile to the northwest corner of said Section 8; thence west 1.0 mile to the southwest corner of Section 6 of said Township; thence north 1.0 mile to the northwest corner of said Section 6 being the southeast corner of Tract 20 filed in book 5 of Maps at page 38; thence continuing north to the northeast corner of Tract 20; thence west 0.5 mile to the southeast corner of Tract 6 filed in book 5 of Maps at page 29; thence north 0.5 mile to the northeast corner of Tract 6; thence west 0.5 mile to the northwest corner of Tract 6 also being the northeast corner of Tract 16 filed in book 5 of Maps at page 32; thence continuing west 1.0 mile to the northwest corner of Tract 3 filed in book 5 of Maps at page 27; thence south 0.5 mile to the northeast corner of Tract 21 filed in book 5 of Maps at page 41; thence west along the north line of Tract 21 to the intersection with Geneseo Road (County Road No. 5216) thence westerly and northerly along Geneseo Road to the intersection with Union Road (County Road No. 5230) thence westerly along Union Road to~~

~~the intersection with Penman Springs Road (County Road No. 5233); thence southerly along Penman Springs Road to the southwest corner of the southeast one quarter of Section 31, Township 26 South, Range 13 East, M.D.M.; thence southeasterly along the southwesterly lines of Lots 13, 12, 11, 16, 17, 18 and 21 of the Map of the Dresser Subdivision No. 1 filed in Book 2 of Maps at Page 77 to the northerly line of Parcel Map COAL 98-0087 filed in Book 56 of Parcel Maps at Page 16; thence southwesterly along the northwesterly line and south along the west line of said Parcel Map and continuing south to the southwest corner of Lot 100 at point SY 13 of the Dunning and Dresser Tract filed in book A of Maps at page 119; thence easterly to the southeast corner of Lot 101 of said Tract; thence southerly along the west line of said Tract to the intersection with Creston Road (County Road No. 4067); thence westerly along Creston Road to the intersection with Neal Spring Road (County Road No. 5206); thence westerly and southwesterly along Neal Spring Road to the intersection with Vaquero Road (County Road No. 5205); thence westerly and southerly along Vaquero Road to the intersection with El Pomar Drive (County Road No. 5203); thence southwesterly along El Pomar Drive to the intersection with Templeton Road (County Road No. 4083); thence westerly along Templeton Road to the westerly line of the Eureka Rancho filed in book A of Maps at page 91 being the centerline of the Salinas River; thence southerly and easterly along the centerline of the Salinas River to the northerly corner of Tract 2498 filed in book 23 of Maps at pages 87-92 and the most northerly corner of the Atascadero city limits; thence southwesterly, southeasterly, and northwesterly along the Atascadero city limits to point "M-12" at the northerly corner of Block 50 as shown on the map of Atascadero Colony filed in book 3AC of Maps at page 67; thence southwesterly along the northwesterly line of the Atascadero Colony and continuing along the Atascadero city limits and the southwesterly projection thereof to the ridgeline of the Santa Lucia Mountain Range; thence in a generally northwesterly direction along said ridgeline 6.2 miles more or less to Old Creek Road (County Road No. 4229); thence northerly 1.7 miles more or less along Old Creek Road to the intersection with State Route 46 and Santa Rosa Creek Road (County Road No. 5086); thence northwesterly along Santa Rosa Creek Road 4.4 miles more or less to the intersection with Cypress Mountain Drive (County Road No. 5265); thence northerly along Cypress Mountain Drive approximately 1.3 miles to the most westerly corner of Parcel 3 of Parcel Map CO 77-347 filed in Book 25 of Parcel Maps at Page 88; thence leaving Cypress Mountain Drive in a generally northwesterly direction along the ridgeline of the Santa Lucia Mountain Range 24 miles more or less to the north boundary of the county being the north line of Township 25 South, Range 7 East, M.D.M. and the Sixth Standard Parallel South; thence east 56 miles more or less along the Sixth Standard Parallel South to the northeast corner of said county; thence continuing on the county boundary southerly and easterly to the southeast corner of Section 35, Township 28 South, Range 18 East and the point of beginning.~~

Whole Census Tracts

101.03

102.02

102.04

102.05



102.06  
102.07  
103.02

Whole Block Groups

CT 101.04 BG 2  
CT 103.01 BG 1  
CT 103.01 BG 3  
CT 103.03 BG 1  
CT 127.07 BG 2  
CT 131 BG 2  
CT 131 BG 4

Individual Blocks

CT 100.16 Block 1037  
CT 100.16 Block 1038  
CT 100.16 Block 1043  
CT 100.16 Block 1044  
CT 100.16 Block 1045  
CT 100.16 Block 3016  
CT 100.16 Block 3022  
CT 100.16 Block 3032  
CT 100.16 Block 3033  
CT 100.16 Block 3034  
CT 100.16 Block 3036  
CT 100.16 Block 3037  
CT 100.16 Block 3038  
CT 100.16 Block 3039  
CT 100.16 Block 3040  
CT 100.16 Block 3041  
CT 100.16 Block 3042  
CT 100.16 Block 3045  
CT 100.16 Block 3046  
CT 100.16 Block 3047  
CT 100.16 Block 3048  
CT 101.01 Block 1007  
CT 101.01 Block 1009  
CT 101.01 Block 1010  
CT 101.01 Block 1011  
CT 101.01 Block 1012  
CT 101.01 Block 1013  
CT 101.01 Block 1014  
CT 101.01 Block 1015

CT 101.01 Block 1016  
CT 101.01 Block 1018  
CT 101.01 Block 1019  
CT 101.01 Block 1020  
CT 101.01 Block 1021  
CT 101.01 Block 1023  
CT 101.01 Block 1024  
CT 101.01 Block 1025  
CT 101.01 Block 1026  
CT 101.01 Block 1030  
CT 101.01 Block 1031  
CT 101.01 Block 1032  
CT 101.01 Block 1033  
CT 101.01 Block 1034  
CT 101.01 Block 1035  
CT 101.01 Block 1036  
CT 101.01 Block 1037  
CT 101.04 Block 1000  
CT 101.04 Block 1001  
CT 101.04 Block 1002  
CT 101.04 Block 1003  
CT 101.04 Block 1004  
CT 101.04 Block 1005  
CT 101.04 Block 1006  
CT 101.04 Block 1007  
CT 101.04 Block 1008  
CT 101.04 Block 1009  
CT 101.04 Block 1010  
CT 101.04 Block 1011

CT 101.04 Block 1012  
CT 101.04 Block 1013  
CT 101.04 Block 1014  
CT 101.04 Block 1015  
CT 101.04 Block 1016  
CT 101.04 Block 1017  
CT 101.04 Block 1021  
CT 101.04 Block 1022  
CT 101.04 Block 1023  
CT 101.04 Block 1024  
CT 101.04 Block 1025  
CT 101.04 Block 1026  
CT 101.04 Block 1027  
CT 101.04 Block 1028  
CT 101.04 Block 1029  
CT 101.04 Block 1030  
CT 101.04 Block 1031  
CT 101.04 Block 1032  
CT 101.04 Block 1033  
CT 101.04 Block 1034  
CT 103.01 Block 2000  
CT 103.01 Block 2001  
CT 103.01 Block 2002  
CT 103.01 Block 2003  
CT 103.01 Block 2004  
CT 103.01 Block 2005  
CT 103.01 Block 2006  
CT 103.01 Block 2007  
CT 103.01 Block 2008

CT 103.01 Block 2010  
CT 103.01 Block 2011  
CT 103.01 Block 2012  
CT 103.01 Block 2013  
CT 103.01 Block 2014  
CT 103.01 Block 2015  
CT 103.01 Block 2016  
CT 103.01 Block 2017  
CT 103.01 Block 2018  
CT 103.01 Block 2019  
CT 103.01 Block 2020  
CT 103.01 Block 2021  
CT 103.01 Block 2022  
CT 103.01 Block 2023  
CT 103.01 Block 2024  
CT 103.01 Block 2025  
CT 103.01 Block 2026  
CT 103.01 Block 2027  
CT 103.01 Block 2028  
CT 103.01 Block 2029  
CT 103.01 Block 2030  
CT 103.01 Block 2031  
CT 103.01 Block 2032  
CT 103.01 Block 2033  
CT 103.01 Block 2034  
CT 103.01 Block 2035  
CT 103.01 Block 2036  
CT 103.01 Block 2037  
CT 103.01 Block 2038  
CT 103.01 Block 2039  
CT 103.01 Block 2040  
CT 103.01 Block 2041  
CT 103.01 Block 2042  
CT 103.01 Block 2043  
CT 103.01 Block 2044  
CT 103.01 Block 2045  
CT 103.01 Block 2046  
CT 103.01 Block 2047  
CT 103.01 Block 2048  
CT 103.01 Block 2049  
CT 103.01 Block 2050  
CT 103.01 Block 2051  
CT 103.01 Block 2052  
CT 103.01 Block 2053  
CT 103.01 Block 2054  
CT 103.01 Block 2055  
CT 103.01 Block 2056  
CT 103.01 Block 2057  
CT 103.01 Block 2058  
CT 103.01 Block 2059

CT 103.01 Block 2061  
CT 103.01 Block 2062  
CT 103.01 Block 2063  
CT 103.01 Block 2064  
CT 103.01 Block 2065  
CT 103.01 Block 2066  
CT 103.01 Block 2067  
CT 103.01 Block 2068  
CT 103.01 Block 2069  
CT 103.01 Block 2070  
CT 103.01 Block 2071  
CT 103.01 Block 2072  
CT 103.01 Block 2073  
CT 103.01 Block 2074  
CT 103.01 Block 2075  
CT 103.01 Block 2076  
CT 103.01 Block 2077  
CT 103.01 Block 2078  
CT 103.01 Block 2079  
CT 103.01 Block 2080  
CT 103.01 Block 2081  
CT 103.01 Block 2082  
CT 103.01 Block 2083  
CT 103.01 Block 2084  
CT 103.01 Block 2085  
CT 103.01 Block 2086  
CT 103.01 Block 2087  
CT 103.01 Block 2088  
CT 103.01 Block 2089  
CT 103.01 Block 2090  
CT 103.01 Block 2091  
CT 103.01 Block 2092  
CT 103.01 Block 2093  
CT 103.01 Block 2094  
CT 103.01 Block 2095  
CT 103.01 Block 2096  
CT 103.01 Block 2097  
CT 103.01 Block 2098  
CT 103.01 Block 2099  
CT 103.01 Block 2100  
CT 103.01 Block 2101  
CT 103.01 Block 2102  
CT 103.01 Block 2103  
CT 103.01 Block 2104  
CT 103.01 Block 2105  
CT 103.01 Block 2106  
CT 103.01 Block 2107  
CT 103.01 Block 2108  
CT 103.01 Block 2109  
CT 103.01 Block 2110

CT 103.01 Block 2112  
CT 103.01 Block 2113  
CT 103.01 Block 2114  
CT 103.01 Block 2115  
CT 103.01 Block 2116  
CT 103.01 Block 2117  
CT 103.01 Block 2118  
CT 103.01 Block 2119  
CT 103.01 Block 2120  
CT 103.01 Block 2121  
CT 103.01 Block 2122  
CT 103.01 Block 2123  
CT 103.01 Block 2124  
CT 103.01 Block 2125  
CT 103.01 Block 2126  
CT 103.01 Block 2127  
CT 103.01 Block 2128  
CT 103.01 Block 2129  
CT 103.01 Block 2130  
CT 103.01 Block 2131  
CT 103.01 Block 2132  
CT 103.01 Block 2133  
CT 103.01 Block 2134  
CT 103.01 Block 2135  
CT 103.01 Block 2136  
CT 103.01 Block 2137  
CT 103.01 Block 2138  
CT 103.01 Block 2139  
CT 103.01 Block 2140  
CT 103.01 Block 2141  
CT 103.01 Block 2142  
CT 103.01 Block 2143  
CT 103.01 Block 2144  
CT 103.01 Block 2145  
CT 103.01 Block 2146  
CT 103.01 Block 2147  
CT 103.01 Block 2148  
CT 103.01 Block 2149  
CT 103.01 Block 2150  
CT 103.01 Block 2151  
CT 103.01 Block 2152  
CT 103.01 Block 2153  
CT 103.01 Block 2154  
CT 103.01 Block 2155  
CT 103.01 Block 2156  
CT 103.01 Block 2157  
CT 103.01 Block 2158  
CT 103.01 Block 2159  
CT 103.01 Block 2160  
CT 103.01 Block 2161

CT 103.01 Block 2163  
CT 103.01 Block 2164  
CT 103.01 Block 2165  
CT 103.01 Block 2166  
CT 103.01 Block 2167  
CT 103.01 Block 2168  
CT 103.01 Block 2169  
CT 103.01 Block 2170  
CT 103.01 Block 2171  
CT 103.01 Block 2172  
CT 103.01 Block 2173  
CT 103.01 Block 2174  
CT 103.01 Block 2175  
CT 103.01 Block 2176  
CT 103.01 Block 2177  
CT 103.01 Block 2178  
CT 103.01 Block 2179  
CT 103.01 Block 2180  
CT 103.01 Block 2181  
CT 103.01 Block 2182  
CT 103.01 Block 2183  
CT 103.01 Block 2184  
CT 103.01 Block 2185  
CT 103.01 Block 2186  
CT 103.01 Block 2187  
CT 103.01 Block 2188  
CT 103.01 Block 2189  
CT 103.01 Block 2190  
CT 103.01 Block 2191  
CT 103.01 Block 2192  
CT 103.01 Block 2193  
CT 103.01 Block 2194  
CT 103.01 Block 2195  
CT 103.01 Block 2196  
CT 103.01 Block 2197  
CT 103.01 Block 2198  
CT 103.01 Block 2199  
CT 103.01 Block 2200  
CT 103.01 Block 2201  
CT 103.01 Block 2202  
CT 103.01 Block 2203  
CT 103.01 Block 2204  
CT 103.01 Block 2205  
CT 103.01 Block 2206  
CT 103.01 Block 2207  
CT 103.01 Block 2208  
CT 103.01 Block 2209  
CT 103.01 Block 2210  
CT 103.01 Block 2211  
CT 103.01 Block 2212

CT 103.01 Block 2214  
CT 103.01 Block 2215  
CT 103.01 Block 2216  
CT 103.01 Block 2217  
CT 103.01 Block 2218  
CT 103.01 Block 2219  
CT 103.01 Block 2220  
CT 103.01 Block 2221  
CT 103.01 Block 2222  
CT 103.01 Block 2223  
CT 103.01 Block 2226  
CT 103.01 Block 2227  
CT 103.01 Block 2228  
CT 103.01 Block 2229  
CT 103.01 Block 2230  
CT 103.01 Block 2231  
CT 103.01 Block 2232  
CT 103.01 Block 2233  
CT 103.01 Block 2234  
CT 103.01 Block 2249  
CT 103.01 Block 2250  
CT 103.01 Block 2251  
CT 103.01 Block 2252  
CT 103.01 Block 2253  
CT 103.01 Block 2254  
CT 103.01 Block 2255  
CT 103.01 Block 2256  
CT 103.03 Block 2000  
CT 103.03 Block 2001  
CT 103.03 Block 2002  
CT 103.03 Block 2003  
CT 103.03 Block 2004  
CT 103.03 Block 2005  
CT 103.03 Block 2006  
CT 103.03 Block 2007  
CT 103.03 Block 2008  
CT 103.03 Block 2009  
CT 103.03 Block 2010  
CT 103.03 Block 2011  
CT 103.03 Block 2012  
CT 103.03 Block 2013  
CT 103.03 Block 2014  
CT 103.03 Block 2015  
CT 103.03 Block 2016  
CT 103.03 Block 2017  
CT 103.03 Block 2018  
CT 103.03 Block 2019  
CT 103.03 Block 2020  
CT 103.03 Block 2021  
CT 103.03 Block 2022

CT 103.03 Block 2024  
CT 103.03 Block 2025  
CT 103.03 Block 2026  
CT 103.03 Block 2027  
CT 103.03 Block 2028  
CT 103.03 Block 2029  
CT 103.03 Block 2030  
CT 103.03 Block 2031  
CT 103.03 Block 2032  
CT 103.03 Block 2033  
CT 103.03 Block 2034  
CT 103.03 Block 2035  
CT 103.03 Block 2036  
CT 103.03 Block 2037  
CT 103.03 Block 2038  
CT 103.03 Block 2039  
CT 103.03 Block 2040  
CT 103.03 Block 2041  
CT 103.03 Block 2042  
CT 103.03 Block 2043  
CT 103.03 Block 2044  
CT 103.03 Block 2045  
CT 103.03 Block 2046  
CT 103.03 Block 2047  
CT 103.03 Block 2048  
CT 103.03 Block 2049  
CT 103.03 Block 2050  
CT 103.03 Block 2051  
CT 103.03 Block 2052  
CT 103.03 Block 2053  
CT 103.03 Block 2054  
CT 103.03 Block 2055  
CT 103.03 Block 2056  
CT 103.03 Block 2057  
CT 103.03 Block 2058  
CT 103.03 Block 2059  
CT 103.03 Block 2060  
CT 103.03 Block 2061  
CT 103.03 Block 2062  
CT 103.03 Block 2063  
CT 103.03 Block 2064  
CT 103.03 Block 2065  
CT 103.03 Block 2066  
CT 103.03 Block 2075  
CT 103.03 Block 2076  
CT 103.03 Block 2077  
CT 103.03 Block 2078  
CT 103.03 Block 2079  
CT 103.03 Block 2083  
CT 103.03 Block 2084

CT 103.03 Block 2086  
CT 103.03 Block 2087  
CT 103.03 Block 2089  
CT 103.03 Block 2090  
CT 103.03 Block 2091  
CT 103.03 Block 2092  
CT 103.03 Block 2093  
CT 103.03 Block 2094  
CT 103.03 Block 2095  
CT 103.03 Block 2096  
CT 103.03 Block 2097  
CT 103.03 Block 2098  
CT 103.03 Block 2099  
CT 103.03 Block 2100  
CT 103.03 Block 2101  
CT 103.03 Block 2102  
CT 103.03 Block 2103  
CT 103.03 Block 2104  
CT 103.03 Block 2105  
CT 103.03 Block 2106  
CT 103.03 Block 2107  
CT 103.03 Block 2108  
CT 103.03 Block 2109  
CT 103.03 Block 2110  
CT 103.03 Block 2111  
CT 103.03 Block 2112  
CT 103.03 Block 2113  
CT 103.03 Block 2114  
CT 103.03 Block 2115  
CT 103.03 Block 2116  
CT 103.03 Block 2117  
CT 103.03 Block 2118  
CT 103.03 Block 2119  
CT 103.03 Block 2120  
CT 103.03 Block 2121  
CT 103.03 Block 2122  
CT 103.03 Block 2123  
CT 103.03 Block 2124  
CT 103.03 Block 2125  
CT 103.03 Block 2126  
CT 103.03 Block 2127  
CT 103.03 Block 2128  
CT 103.03 Block 2129  
CT 103.03 Block 2130  
CT 103.03 Block 2131  
CT 103.03 Block 2132  
CT 103.03 Block 2133  
CT 103.03 Block 2134  
CT 103.03 Block 2135  
CT 103.03 Block 2136

CT 103.03 Block 2138  
CT 103.03 Block 2139  
CT 103.03 Block 2140  
CT 103.03 Block 2141  
CT 103.03 Block 2142  
CT 103.03 Block 2143  
CT 103.03 Block 2144  
CT 103.03 Block 2145  
CT 103.03 Block 2146  
CT 103.03 Block 2147  
CT 103.03 Block 2148  
CT 103.03 Block 2149  
CT 103.03 Block 2150  
CT 103.03 Block 2151  
CT 103.03 Block 2152  
CT 103.03 Block 2153  
CT 103.03 Block 2154  
CT 103.03 Block 2155  
CT 103.03 Block 2156  
CT 103.03 Block 2157  
CT 103.03 Block 2158  
CT 103.03 Block 2159  
CT 103.03 Block 2160  
CT 127.05 Block 2000  
CT 127.05 Block 2001  
CT 127.05 Block 2002  
CT 127.05 Block 2003  
CT 127.05 Block 2004  
CT 127.05 Block 2005  
CT 127.05 Block 2006  
CT 127.05 Block 2007  
CT 127.05 Block 2008  
CT 127.05 Block 2009  
CT 127.05 Block 2010  
CT 127.05 Block 2011  
CT 127.05 Block 2012  
CT 127.05 Block 2013  
CT 127.05 Block 2014  
CT 127.05 Block 2015  
CT 127.05 Block 2016  
CT 127.05 Block 2017  
CT 127.05 Block 2020  
CT 127.05 Block 2042  
CT 127.05 Block 2048  
CT 127.05 Block 2049  
CT 127.05 Block 2050  
CT 127.05 Block 2059  
CT 127.05 Block 3006  
CT 127.05 Block 3011  
CT 127.05 Block 3012

CT 127.05 Block 3016  
CT 127.05 Block 3017  
CT 127.05 Block 3018  
CT 127.05 Block 3019  
CT 127.05 Block 3020  
CT 127.05 Block 3021  
CT 127.05 Block 3022  
CT 127.05 Block 3023  
CT 127.05 Block 3024  
CT 127.05 Block 3025  
CT 127.05 Block 3026  
CT 127.05 Block 3027  
CT 127.05 Block 3028  
CT 127.05 Block 3029  
CT 127.05 Block 3030  
CT 127.05 Block 3031  
CT 127.05 Block 3032  
CT 127.05 Block 3033  
CT 127.05 Block 3034  
CT 127.05 Block 3035  
CT 127.05 Block 3036  
CT 127.05 Block 3037  
CT 127.05 Block 3038  
CT 127.05 Block 3039  
CT 127.05 Block 3040  
CT 127.05 Block 3041  
CT 127.05 Block 3042  
CT 127.05 Block 3043  
CT 127.05 Block 3044  
CT 127.05 Block 3045  
CT 127.05 Block 3046  
CT 127.05 Block 3047  
CT 127.05 Block 3048  
CT 127.05 Block 3049  
CT 127.05 Block 3050  
CT 127.05 Block 3051  
CT 127.05 Block 3052  
CT 127.05 Block 3053  
CT 127.05 Block 3054  
CT 127.05 Block 3055  
CT 127.05 Block 3056  
CT 127.05 Block 3057  
CT 127.05 Block 3058  
CT 127.05 Block 3059  
CT 127.05 Block 3060  
CT 127.05 Block 3061  
CT 127.05 Block 3062  
CT 127.05 Block 3063  
CT 127.05 Block 3064  
CT 127.05 Block 3065

CT 127.05 Block 3067  
CT 127.05 Block 3068  
CT 127.05 Block 3069  
CT 127.05 Block 4009  
CT 127.05 Block 4011  
CT 127.05 Block 4012  
CT 127.05 Block 4028  
CT 127.06 Block 1000  
CT 127.06 Block 1001  
CT 127.06 Block 1002  
CT 127.06 Block 1003  
CT 127.06 Block 1004  
CT 127.06 Block 1005  
CT 127.06 Block 1006  
CT 127.06 Block 1007  
CT 127.06 Block 1008  
CT 127.06 Block 1010  
CT 127.06 Block 1029  
CT 127.06 Block 1030  
CT 127.06 Block 1062  
CT 127.07 Block 1000  
CT 127.07 Block 1001  
CT 127.07 Block 1002  
CT 127.07 Block 1006  
CT 127.07 Block 1007  
CT 127.07 Block 1008  
CT 127.07 Block 1009  
CT 127.07 Block 1010  
CT 127.07 Block 1011  
CT 127.07 Block 1012  
CT 127.07 Block 1013  
CT 127.07 Block 1014  
CT 127.07 Block 1015  
CT 127.07 Block 1016  
CT 127.07 Block 1017  
CT 127.07 Block 1019  
CT 127.07 Block 1020  
CT 127.07 Block 1021  
CT 127.07 Block 1022  
CT 127.07 Block 1023  
CT 127.07 Block 1024  
CT 127.07 Block 1025  
CT 127.07 Block 1026  
CT 127.07 Block 1027  
CT 127.07 Block 1028  
CT 127.07 Block 1029  
CT 127.07 Block 1030  
CT 127.07 Block 1031  
CT 127.07 Block 1032  
CT 127.07 Block 1033

CT 127.07 Block 1035  
CT 127.07 Block 1036  
CT 127.07 Block 1037  
CT 127.07 Block 3001  
CT 127.07 Block 3002  
CT 127.07 Block 3009  
CT 127.07 Block 3010  
CT 127.07 Block 3015  
CT 127.07 Block 3016  
CT 127.07 Block 3017  
CT 127.07 Block 3018  
CT 127.07 Block 3019  
CT 127.07 Block 3020  
CT 127.07 Block 3021  
CT 127.07 Block 3022  
CT 127.07 Block 3023  
CT 127.07 Block 3024  
CT 127.07 Block 3025  
CT 127.07 Block 3026  
CT 127.07 Block 3027  
CT 127.07 Block 3028  
CT 127.07 Block 3029  
CT 127.07 Block 3030  
CT 127.07 Block 3031  
CT 127.07 Block 3032  
CT 127.07 Block 3033  
CT 127.07 Block 3034  
CT 127.07 Block 3035  
CT 127.07 Block 3036  
CT 127.07 Block 3037  
CT 127.07 Block 3038  
CT 127.07 Block 3039  
CT 127.07 Block 3040  
CT 127.08 Block 1000  
CT 127.08 Block 1001  
CT 127.08 Block 1002  
CT 127.08 Block 1003  
CT 127.08 Block 1004  
CT 127.08 Block 1006  
CT 127.08 Block 1007  
CT 127.08 Block 1008  
CT 127.08 Block 1051  
CT 127.08 Block 1052  
CT 127.08 Block 1053  
CT 127.08 Block 1054  
CT 127.08 Block 1055  
CT 127.08 Block 1056  
CT 127.08 Block 1057  
CT 127.08 Block 1058  
CT 127.08 Block 1059

CT 127.08 Block 1061  
CT 127.08 Block 1062  
CT 127.08 Block 1067  
CT 127.08 Block 1068  
CT 127.08 Block 1069  
CT 127.08 Block 1070  
CT 127.08 Block 1071  
CT 127.08 Block 1072  
CT 127.08 Block 1073  
CT 127.08 Block 1074  
CT 127.08 Block 1075  
CT 127.08 Block 1076  
CT 127.08 Block 1077  
CT 127.08 Block 1078  
CT 127.08 Block 1079  
CT 127.08 Block 1080  
CT 127.08 Block 1081  
CT 127.08 Block 1092  
CT 127.08 Block 1093  
CT 127.08 Block 1094  
CT 127.08 Block 1095  
CT 127.08 Block 1144  
CT 127.08 Block 1510  
CT 131 Block 1000  
CT 131 Block 1001  
CT 131 Block 1002  
CT 131 Block 1003  
CT 131 Block 1004  
CT 131 Block 1005  
CT 131 Block 1006  
CT 131 Block 1007  
CT 131 Block 1008  
CT 131 Block 1009  
CT 131 Block 1010  
CT 131 Block 1011  
CT 131 Block 1012  
CT 131 Block 1013  
CT 131 Block 1014  
CT 131 Block 1015  
CT 131 Block 1016  
CT 131 Block 1017  
CT 131 Block 1018  
CT 131 Block 1019  
CT 131 Block 1020  
CT 131 Block 1021  
CT 131 Block 1022  
CT 131 Block 1023  
CT 131 Block 1024  
CT 131 Block 1025  
CT 131 Block 1026

CT 131 Block 1027  
CT 131 Block 1028  
CT 131 Block 1029  
CT 131 Block 1030  
CT 131 Block 1031  
CT 131 Block 1032  
CT 131 Block 1033  
CT 131 Block 1035  
CT 131 Block 1036  
CT 131 Block 1037  
CT 131 Block 1038  
CT 131 Block 1039  
CT 131 Block 1040  
CT 131 Block 3000  
CT 131 Block 3001  
CT 131 Block 3002  
CT 131 Block 3003  
CT 131 Block 3004  
CT 131 Block 3005  
CT 131 Block 3006  
CT 131 Block 3010  
CT 131 Block 3011  
CT 131 Block 3012  
CT 131 Block 5000  
CT 131 Block 5001

CT 131 Block 5002  
CT 131 Block 5003  
CT 131 Block 5004  
CT 131 Block 5005  
CT 131 Block 5006  
CT 131 Block 5007  
CT 131 Block 5008  
CT 131 Block 5009  
CT 131 Block 5010  
CT 131 Block 5011  
CT 131 Block 5012  
CT 131 Block 5013  
CT 131 Block 5014  
CT 131 Block 5015  
CT 131 Block 5016  
CT 131 Block 5017  
CT 131 Block 5018  
CT 131 Block 5019  
CT 131 Block 5020  
CT 131 Block 5021  
CT 131 Block 5022  
CT 131 Block 5023  
CT 131 Block 5024  
CT 131 Block 5025  
CT 131 Block 5026

CT 131 Block 5027  
CT 131 Block 5028  
CT 131 Block 5029  
CT 131 Block 5030  
CT 131 Block 5031  
CT 131 Block 5032  
CT 131 Block 5033  
CT 131 Block 5034  
CT 131 Block 5035  
CT 131 Block 5036  
CT 131 Block 5037  
CT 131 Block 5038  
CT 131 Block 5039  
CT 131 Block 5040  
CT 131 Block 5041  
CT 131 Block 5042  
CT 131 Block 5043  
CT 131 Block 5044  
CT 131 Block 5045  
CT 131 Block 5046  
CT 131 Block 5048  
CT 131 Block 5049  
CT 131 Block 5050

**Section 2.60.020 Second supervisorial district.** The second supervisorial district shall be all that territory in the county included within the following described boundaries comprised of the following 2020 U.S. census blocks:

Beginning at the northwest corner of the County of San Luis Obispo, as defined in Section 23140 of the Government Code, on the north line of Township 25 South, Range 6 East, M.D.M., also being a point on the line of ordinary high water of the Pacific Ocean and on the Sixth Standard Parallel South; thence, east along said Sixth Standard Parallel South and the north boundary of said County, 9 miles more or less to the ridgeline of the Santa Lucia Mountain Range; thence, leaving said county boundary in a generally southeasterly direction along said ridgeline 24 miles more or less to the intersection with Cypress Mountain Drive (County Road No. 5265) at the most westerly corner of Parcel 3 of Parcel Map CO 77-347 filed in Book 25 of Parcel Maps at Page 88; thence southerly along Cypress Mountain Drive 1.3 miles more or less to the intersection with Santa Rosa Creek Road (County Road No. 5086); thence southeasterly along Santa Rosa Creek Road 4.4 miles more or less to the intersection with State Route 46 and Old Creek Road (County Road No. 4229); thence southerly 1.7 miles more or less along Old Creek Road to the ridgeline of said Santa Lucia Mountain Range; thence in a generally southeasterly direction along said ridgeline 6.2 miles more or less to the southwesterly projection of the northwesterly line of the Atascadero Colony per the map filed October 21, 1914, records of the San Luis Obispo County Recorder; thence southwesterly along said line to the southwesterly line of the Rancho La Asuncion as shown on the Plat of the Rancho Asuncion as confirmed to Pedro Estrada surveyed in 1861; thence southeasterly along said southwesterly line of said Rancho to the intersection with State Route 41; thence easterly along Route 41 to the intersection with Old Morro Road West (County Road No. 4004); thence southerly along Old Morro Road West to the intersection with San Miguel Road as shown on the map of Atascadero Colony filed in book 3AC of Maps at page 115; thence southerly along San Miguel Road and the southerly projection thereof to the southwesterly line of said Rancho Asuncion; thence southeasterly along the southwesterly line of Rancho Asuncion to the east line of Township 28 South, Range 11 East, M.D.M.; thence south along said east line to the southeast corner of said Township 28 South, Range 11 East; thence west along the south line of said Township to the northeast corner of Township 29 South, Range 11 East; thence south along the east line of said Township to the southeast corner of Section 12 of said Township; thence continuing south to the intersection with TV Tower Road; thence southeasterly along TV Tower Road 7.5 miles more or less to the west line of Section 1, Township 30 South, Range 12 East; thence south along said west line to the northwest corner of Lot 1 of said Section 1; thence east along the north line of said Lot 1 and continuing east to the intersection with U.S. Highway 101; thence southerly along U.S. Highway 101 approximately 4.1 miles to the intersection with Miozzi Road; thence westerly along Miozzi Road 0.5 mile more or less to the city limits of San Luis Obispo; thence northerly and westerly along the city limits of San Luis Obispo to the easterly end of Slack Street; thence continuing along the city limits of San Luis Obispo westerly along Slack Street to the intersection with Grand Avenue; thence leaving the city limit line northerly and northwesterly along Grand Avenue to the intersection with Perimeter Road; thence northerly and westerly along Perimeter Road to the intersection with Via Carta; thence northerly along Via Carta to the intersection with Highland Drive; thence southwesterly along Highland Drive to the intersection with North Chorro Street; thence southerly along North Chorro Street to the intersection with Ferrini Road and the city limits of San Luis Obispo; thence entering the city of San Luis Obispo southerly along Ferrini Road to the intersection with Foothill Boulevard; thence west on Foothill Boulevard to the intersection with South Tassajara

Drive; thence south along South Tassajara Drive to the intersection with Luneta Drive; thence west along Luneta Drive to the intersection with Hermosa Way; thence southwesterly along Hermosa Way to the intersection with La Entrada Avenue; thence southeasterly along La Entrada Avenue to the southerly line of Tract 127 filed in book 5 of Maps at Page 114; thence northeasterly and southeasterly along the southerly line of Tract 127 to the San Luis Obispo city limits; thence easterly and southerly along the city limits to the northerly line of Parcel 2 of COAL 07-0007 as recorded June 26, 2008 in Document Number 2008033187 in the San Luis Obispo County Recorder's office to a point being the westerly terminus of the line described in said document as "South 83°26'00" West 127.73 feet"; thence entering the city of San Luis Obispo easterly along said line to post "L. No. 4" being the westerly corner of the parcel described in the deed recorded October 3, 1918 in book 123 of Deeds at page 430; thence northeasterly along the northwesterly line of said parcel to post "G.L. No. 2" as described in said deed; thence southeasterly along the northeasterly line of said parcel and the southeasterly projection thereof to the intersection with U.S. Highway 101; thence southerly along Highway 101 to the intersection with Madonna Road; thence southwesterly along Madonna Road to the northerly projection of the easterly line of Tract 169 filed in book 6 of Maps at page 45; thence southerly along the easterly line of Tract 169 and the city limits of San Luis Obispo to the northeasterly line of Tract 234 filed in book 6 of Maps at page 82; thence continuing along the city limits of San Luis Obispo southeasterly to the easterly corner of Tract 234; thence southwesterly along the southeasterly line of Tract 234 and the southwesterly projection thereof to Los Osos Valley Road and into the city of San Luis Obispo; thence northwesterly along Los Osos Valley Road to the intersection with Prefumo Canyon Road; thence southwesterly and northwesterly along Prefumo Canyon Road to the city limits of San Luis Obispo; thence leaving the city of San Luis Obispo and continuing along Prefumo Canyon Road (County Road No. 2084 formerly County Road No. 139) 6.5 miles more or less to the end of Prefumo Canyon Road; thence leaving Prefumo Canyon Road and following Old County Road No. 139 westerly along Coon Creek Canyon to the intersection with Coon Creek; thence westerly along Coon Creek, downstream, to the ordinary high water line of the Pacific Ocean; thence, northwesterly along the ordinary high water line of the Pacific Ocean and the west boundary line of San Luis Obispo County to the point of beginning.

Whole Census Tracts

- 100.17
- 104.03
- 104.04
- 105.04
- 114
- 125.02
- 125.03
- 125.05
- 126.01
- 126.02

Whole Block Groups

- CT 100.16 BG 2
- CT 127.06 BG 2
- CT 127.06 BG 3

Individual Blocks



CT 100.16 Block 1000  
CT 100.16 Block 1001  
CT 100.16 Block 1002  
CT 100.16 Block 1003  
CT 100.16 Block 1004  
CT 100.16 Block 1005  
CT 100.16 Block 1006  
CT 100.16 Block 1007  
CT 100.16 Block 1008  
CT 100.16 Block 1009  
CT 100.16 Block 1010  
CT 100.16 Block 1011  
CT 100.16 Block 1012  
CT 100.16 Block 1013  
CT 100.16 Block 1014  
CT 100.16 Block 1015  
CT 100.16 Block 1016  
CT 100.16 Block 1017  
CT 100.16 Block 1018  
CT 100.16 Block 1019  
CT 100.16 Block 1020  
CT 100.16 Block 1021  
CT 100.16 Block 1022  
CT 100.16 Block 1023  
CT 100.16 Block 1024  
CT 100.16 Block 1025  
CT 100.16 Block 1026  
CT 100.16 Block 1027  
CT 100.16 Block 1028  
CT 100.16 Block 1029  
CT 100.16 Block 1030  
CT 100.16 Block 1031  
CT 100.16 Block 1032  
CT 100.16 Block 1033  
CT 100.16 Block 1034  
CT 100.16 Block 1035  
CT 100.16 Block 1036  
CT 100.16 Block 1039  
CT 100.16 Block 1040  
CT 100.16 Block 1041  
CT 100.16 Block 1042  
CT 100.16 Block 1046  
CT 100.16 Block 1047  
CT 100.16 Block 1048  
CT 100.16 Block 1049  
CT 100.16 Block 1050  
CT 100.16 Block 1051  
CT 100.16 Block 1052  
CT 100.16 Block 1053  
CT 100.16 Block 1054

CT 100.16 Block 1055  
CT 100.16 Block 1056  
CT 100.16 Block 1057  
CT 100.16 Block 1058  
CT 100.16 Block 1059  
CT 100.16 Block 1060  
CT 100.16 Block 1061  
CT 100.16 Block 1062  
CT 100.16 Block 1063  
CT 100.16 Block 1064  
CT 100.16 Block 1065  
CT 100.16 Block 1066  
CT 100.16 Block 1067  
CT 100.16 Block 1068  
CT 100.16 Block 1069  
CT 100.16 Block 1070  
CT 100.16 Block 1071  
CT 100.16 Block 1072  
CT 100.16 Block 1073  
CT 100.16 Block 1074  
CT 100.16 Block 1075  
CT 100.16 Block 1076  
CT 100.16 Block 3000  
CT 100.16 Block 3001  
CT 100.16 Block 3002  
CT 100.16 Block 3003  
CT 100.16 Block 3004  
CT 100.16 Block 3005  
CT 100.16 Block 3006  
CT 100.16 Block 3007  
CT 100.16 Block 3008  
CT 100.16 Block 3009  
CT 100.16 Block 3010  
CT 100.16 Block 3011  
CT 100.16 Block 3012  
CT 100.16 Block 3013  
CT 100.16 Block 3014  
CT 100.16 Block 3015  
CT 100.16 Block 3017  
CT 100.16 Block 3018  
CT 100.16 Block 3019  
CT 100.16 Block 3020  
CT 100.16 Block 3021  
CT 100.16 Block 3023  
CT 100.16 Block 3024  
CT 100.16 Block 3025  
CT 100.16 Block 3026  
CT 100.16 Block 3027  
CT 100.16 Block 3028  
CT 100.16 Block 3029

CT 100.16 Block 3030  
CT 100.16 Block 3031  
CT 100.16 Block 3035  
CT 100.16 Block 3043  
CT 100.16 Block 3044  
CT 100.16 Block 3049  
CT 101.01 Block 1000  
CT 101.01 Block 1001  
CT 101.01 Block 1002  
CT 101.01 Block 1003  
CT 101.01 Block 1004  
CT 101.01 Block 1005  
CT 101.01 Block 1006  
CT 101.01 Block 1008  
CT 101.01 Block 1017  
CT 101.01 Block 1022  
CT 101.01 Block 1027  
CT 101.01 Block 1028  
CT 101.01 Block 1029  
CT 101.04 Block 1018  
CT 101.04 Block 1019  
CT 101.04 Block 1020  
CT 103.03 Block 2067  
CT 103.03 Block 2068  
CT 103.03 Block 2069  
CT 103.03 Block 2070  
CT 103.03 Block 2071  
CT 103.03 Block 2072  
CT 103.03 Block 2073  
CT 103.03 Block 2074  
CT 103.03 Block 2080  
CT 103.03 Block 2081  
CT 103.03 Block 2082  
CT 103.03 Block 2088  
CT 105.05 Block 2000  
CT 105.05 Block 2043  
CT 105.05 Block 2044  
CT 105.05 Block 2045  
CT 105.06 Block 1000  
CT 105.06 Block 1001  
CT 105.06 Block 1021  
CT 105.06 Block 2002  
CT 106.02 Block 2001  
CT 106.03 Block 1000  
CT 106.03 Block 1002  
CT 106.03 Block 1003  
CT 106.03 Block 1004  
CT 109.04 Block 1000  
CT 109.04 Block 1001  
CT 109.04 Block 1003



CT 127.05 Block 4024  
CT 127.05 Block 4025  
CT 127.05 Block 4026  
CT 127.05 Block 4027  
CT 127.06 Block 1009  
CT 127.06 Block 1011  
CT 127.06 Block 1012  
CT 127.06 Block 1013  
CT 127.06 Block 1014  
CT 127.06 Block 1015  
CT 127.06 Block 1016  
CT 127.06 Block 1017  
CT 127.06 Block 1018  
CT 127.06 Block 1019  
CT 127.06 Block 1020  
CT 127.06 Block 1021  
CT 127.06 Block 1022  
CT 127.06 Block 1023  
CT 127.06 Block 1024  
CT 127.06 Block 1025  
CT 127.06 Block 1026  
CT 127.06 Block 1027  
CT 127.06 Block 1028  
CT 127.06 Block 1031  
CT 127.06 Block 1032  
CT 127.06 Block 1033  
CT 127.06 Block 1034  
CT 127.06 Block 1035  
CT 127.06 Block 1036  
CT 127.06 Block 1037  
CT 127.06 Block 1038  
CT 127.06 Block 1039  
CT 127.06 Block 1040  
CT 127.06 Block 1041  
CT 127.06 Block 1042  
CT 127.06 Block 1043  
CT 127.06 Block 1044  
CT 127.06 Block 1045  
CT 127.06 Block 1046  
CT 127.06 Block 1047  
CT 127.06 Block 1048  
CT 127.06 Block 1049  
CT 127.06 Block 1050  
CT 127.06 Block 1051  
CT 127.06 Block 1052  
CT 127.06 Block 1053  
CT 127.06 Block 1054  
CT 127.06 Block 1055  
CT 127.06 Block 1056  
CT 127.06 Block 1057  
CT 127.06 Block 1058

CT 127.06 Block 1059  
CT 127.06 Block 1060  
CT 127.06 Block 1061  
CT 127.06 Block 1063  
CT 127.07 Block 1003  
CT 127.07 Block 1004  
CT 127.07 Block 1005  
CT 127.07 Block 1018  
CT 127.07 Block 3000  
CT 127.07 Block 3003  
CT 127.07 Block 3004  
CT 127.07 Block 3005  
CT 127.07 Block 3006  
CT 127.07 Block 3007  
CT 127.07 Block 3008  
CT 127.07 Block 3011  
CT 127.07 Block 3012  
CT 127.07 Block 3013  
CT 127.07 Block 3014  
CT 130 Block 1000  
CT 130 Block 1001  
CT 130 Block 1002  
CT 130 Block 1003  
CT 130 Block 1004  
CT 130 Block 1005  
CT 130 Block 1006  
CT 130 Block 1007  
CT 130 Block 1008  
CT 130 Block 1009  
CT 130 Block 1010  
CT 130 Block 1011  
CT 130 Block 1012  
CT 130 Block 1013  
CT 130 Block 1014  
CT 130 Block 1015  
CT 130 Block 1016  
CT 130 Block 1017  
CT 130 Block 1018  
CT 130 Block 1019  
CT 130 Block 1020  
CT 130 Block 1021  
CT 130 Block 1022  
CT 130 Block 1023  
CT 130 Block 1024  
CT 130 Block 1025  
CT 130 Block 1026  
CT 130 Block 1027  
CT 130 Block 1028  
CT 130 Block 1029  
CT 130 Block 1030  
CT 130 Block 1031

CT 130 Block 1032  
CT 130 Block 1033  
CT 130 Block 1034  
CT 130 Block 1035  
CT 130 Block 1036  
CT 130 Block 1037  
CT 130 Block 1038  
CT 130 Block 1039  
CT 130 Block 1040  
CT 130 Block 1041  
CT 130 Block 1042  
CT 130 Block 1043  
CT 130 Block 1044  
CT 130 Block 1045  
CT 130 Block 1046  
CT 130 Block 1047  
CT 130 Block 1048  
CT 130 Block 1049  
CT 130 Block 1050  
CT 130 Block 1051  
CT 130 Block 1052  
CT 130 Block 1053  
CT 130 Block 1054  
CT 130 Block 1055  
CT 130 Block 1056  
CT 130 Block 1057  
CT 130 Block 1058  
CT 130 Block 1059  
CT 130 Block 1060  
CT 130 Block 1061  
CT 130 Block 1062  
CT 130 Block 1063  
CT 130 Block 1064  
CT 130 Block 1065  
CT 130 Block 1066  
CT 130 Block 1067  
CT 130 Block 1068  
CT 130 Block 1069  
CT 130 Block 1070  
CT 130 Block 1071  
CT 130 Block 1072  
CT 130 Block 1073  
CT 130 Block 1074  
CT 130 Block 1075  
CT 130 Block 1076  
CT 130 Block 1077  
CT 130 Block 1078  
CT 130 Block 1079  
CT 130 Block 1080  
CT 130 Block 1081  
CT 130 Block 1082

CT 130 Block 1083  
CT 130 Block 1084  
CT 130 Block 1085  
CT 130 Block 1086  
CT 130 Block 1087  
CT 130 Block 1088  
CT 130 Block 1089  
CT 130 Block 1090  
CT 130 Block 1091  
CT 130 Block 1092  
CT 130 Block 1093  
CT 130 Block 1094  
CT 130 Block 1095  
CT 130 Block 1096  
CT 130 Block 1097  
CT 130 Block 1098  
CT 130 Block 1099  
CT 130 Block 1100  
CT 130 Block 1101  
CT 130 Block 1102  
CT 130 Block 1103  
CT 130 Block 1104  
CT 130 Block 1105  
CT 130 Block 1106  
CT 130 Block 1107  
CT 130 Block 1108  
CT 130 Block 1109  
CT 130 Block 1110  
CT 130 Block 1111  
CT 130 Block 1112  
CT 130 Block 1113  
CT 130 Block 1114  
CT 130 Block 1115  
CT 130 Block 1116  
CT 130 Block 1117  
CT 130 Block 1118  
CT 130 Block 1119  
CT 130 Block 1120  
CT 130 Block 1121  
CT 130 Block 1122  
CT 130 Block 1123  
CT 130 Block 1124  
CT 130 Block 1125  
CT 130 Block 1126  
CT 130 Block 1127  
CT 130 Block 1128  
CT 130 Block 1129  
CT 130 Block 1130  
CT 130 Block 1131  
CT 130 Block 1132  
CT 130 Block 1133

CT 130 Block 1134  
CT 130 Block 1135  
CT 130 Block 1136  
CT 130 Block 1137  
CT 130 Block 1138  
CT 130 Block 1139  
CT 130 Block 1140  
CT 130 Block 1141  
CT 130 Block 1142  
CT 130 Block 1143  
CT 130 Block 1144  
CT 130 Block 1145  
CT 130 Block 1146  
CT 130 Block 1147  
CT 130 Block 1148  
CT 130 Block 1149  
CT 130 Block 1150  
CT 130 Block 1151  
CT 130 Block 1152  
CT 130 Block 1153  
CT 130 Block 1154  
CT 130 Block 1155  
CT 130 Block 1156  
CT 130 Block 1157  
CT 130 Block 1158  
CT 130 Block 1159  
CT 130 Block 1160  
CT 130 Block 1161  
CT 130 Block 1162  
CT 130 Block 1163  
CT 130 Block 1164  
CT 130 Block 1165  
CT 130 Block 1166  
CT 130 Block 1167  
CT 130 Block 1168  
CT 130 Block 1169  
CT 130 Block 1170  
CT 130 Block 1171  
CT 130 Block 1172  
CT 130 Block 1173  
CT 130 Block 1175  
CT 130 Block 1176  
CT 130 Block 1177  
CT 130 Block 1178  
CT 130 Block 1179  
CT 130 Block 2000  
CT 130 Block 2001  
CT 130 Block 2002  
CT 130 Block 2003  
CT 130 Block 2004  
CT 130 Block 2005

CT 130 Block 2006  
CT 130 Block 2007  
CT 130 Block 2008  
CT 130 Block 2009  
CT 130 Block 2010  
CT 130 Block 2011  
CT 130 Block 2012  
CT 130 Block 2013  
CT 130 Block 2014  
CT 130 Block 2015  
CT 130 Block 2016  
CT 130 Block 2017  
CT 130 Block 2018  
CT 130 Block 2019  
CT 130 Block 2020  
CT 130 Block 2021  
CT 130 Block 2022  
CT 130 Block 2023  
CT 130 Block 2024  
CT 130 Block 2025  
CT 130 Block 2026  
CT 130 Block 2027  
CT 130 Block 2028  
CT 130 Block 2029  
CT 130 Block 2030  
CT 130 Block 2031  
CT 130 Block 2032  
CT 130 Block 2033  
CT 130 Block 2034  
CT 130 Block 2035  
CT 130 Block 2036  
CT 130 Block 2037  
CT 131 Block 1034  
CT 131 Block 3007  
CT 131 Block 3008  
CT 131 Block 3009  
CT 131 Block 3013  
CT 131 Block 3014  
CT 131 Block 3015  
CT 131 Block 3016  
CT 131 Block 5047  
CT 9900 Block 0001  
CT 9900 Block 0002  
CT 9900 Block 0003  
CT 9900 Block 0004

**Section 2.60.030 Third supervisorial district.** The third supervisorial district shall be all that territory in the county included within the following described boundaries comprised of the following 2020 U.S. census blocks:

~~Beginning at the southwesterly comer of the City of Grover Beach said comer being on the ordinary high water line of the Pacific Ocean; thence, following along the city limits of Grover Beach South 69° 15' East crossing State Route 1 to an angle point in the city limits, continuing southerly, easterly and northerly along the city limits of Grover Beach and along the common line with the City of Arroyo Grande to the point common with the city limits of Pismo Beach; thence, leaving the city limits of Grover Beach and continuing northeasterly along the northwesterly city limits of Arroyo Grande along Oak Park Road and Noyes Road to the most northerly angle point of the City of Arroyo Grande; thence, leaving the city limits of Arroyo Grande and continuing northeasterly along Noyes Road (County Road No. 2003) to the intersection with La Teena Place (County Road No. 2206); thence, easterly along La Teena Place to the intersection with Karina Way (County Road No. 2205); thence southerly along Karina Way to the intersection with Phillips Road (County Road No. 2011); thence easterly along Phillips Road to the intersection with Carpenter Canyon Road (State Route 227); thence southerly along State Route 227 to the intersection with Royal Oak Place (County Road No. 2013); thence easterly along Royal Oak Place to the intersection with Corbett Canyon Road (County Road No. 2014); thence northerly along Corbett Canyon Road a distance of 0.4 mile more or less to the intersection with Paloma Place (County Road No. 2118); thence southerly and easterly along Paloma Place to the intersection with Stagecoach Road (County Road No. 2022); thence southwesterly along Stagecoach Road to the northwesterly projection of the northeasterly line of Parcel Map CO 97-122 filed in book 54 of Parcel Maps at page 8; thence southeasterly along the northeasterly line of said map and continuing southeasterly along the northeasterly line of Parcel Map CO 83-165 filed in book 37 of Parcel Maps at page 22; thence continuing southeasterly along the northeasterly line of Parcel Map CO 73-385 filed in Book 16 of Parcel Maps at page 43 to the northerly corner of Parcel D of said map; thence southwesterly along the northwesterly line and southeasterly along the southwesterly line of said Parcel D to Huasna Road (County Road No. 2023); thence northeasterly along Huasna Road to the intersection with Lopez Drive (County Road No. 2019); thence northeasterly along Lopez Drive a distance of 2.8 miles more or less to the intersection with Orcutt Road (County Road No. 2039); thence northwesterly along Orcutt Road 5.8 miles more or less to the intersection with Righetti Road (County Road No. 2038); thence northeasterly along Righetti Road to the southwesterly line of Lot 11 of Stratton's 1873 Map of Parts of the Ranchos Corral de Piedra - Pismo - Bolsa de Chamisal filed in Book A of Maps at page 65; thence continuing northeasterly along the northerly projection of Righetti Road to the centerline of West Corral de Piedra Creek; thence northeasterly, northerly and northwesterly upstream along the centerline of West Corral de Piedra Creek to the eastline of Section 32, Township 30 South, Range 13 East, M.D.M.; thence north 0.8 mile more or less to the northeast corner of said Section 32; thence west 2 miles to the southwest corner of Section 30, Township 30 South, Range 13 East; thence north 0.5 mile to the northeast corner of the southeast one quarter of Section 25, Township 30 South, Range 12 East; thence west to the northwest corner of the northeast one quarter of the southwest one quarter of said Section 25 and the San Luis Obispo city limits; thence southwesterly into the city of San Luis Obispo to the northeast corner of Lot 3 of Tract 940 filed in book 12 of Maps at page 67; thence westerly and northwesterly along the northerly line of said~~

~~Lot 3 and the northwesterly projection thereof to Andrews Street; thence westerly and northwesterly along Andrews Street to the intersection with San Luis Drive; thence southwesterly along San Luis Drive to the intersection with California Boulevard; thence westerly along California Boulevard to the intersection with Marsh Street; thence southwesterly along Marsh Street 1.2 miles more or less to the intersection with U.S. Highway 101; thence southerly along Highway 101 to the intersection with Madonna Road; thence southwesterly along Madonna Road to the northerly projection of the easterly line of Tract 169 filed in book 6 of Maps at page 45; thence southerly along the easterly line of Tract 169 and the city limits of San Luis Obispo to the northeasterly line of Tract 234 filed in book 6 of Maps at page 82; thence continuing along the city limits of San Luis Obispo southeasterly to the easterly corner of Tract 234; thence southwesterly along the southeasterly line of Tract 234 and the southwesterly projection thereof to Los Osos Valley Road and into the city of San Luis Obispo; thence northwesterly along Los Osos Valley Road to the intersection with Prefumo Canyon Road; thence southwesterly and northwesterly along Prefumo Canyon Road to the city limits of San Luis Obispo; thence leaving the city of San Luis Obispo and continuing along Prefumo Canyon Road (County Road No. 2084 formerly County Road No. 139) 6.5 miles more or less to the end of Prefumo Canyon; thence leaving Prefumo Canyon Road and following Old County Road No. 139 westerly along Coon Creek Canyon to the intersection with Coon Creek; thence westerly along Coon Creek, downstream, to the ordinary high-water line of the Pacific Ocean; thence, southerly and easterly along the ordinary high water line of the Pacific Ocean and the west boundary line of San Luis Obispo County to the point of beginning.~~

Whole Census Tracts

- 109.02
- 109.03
- 111.01
- 111.04
- 111.05

Whole Block Groups

- CT 105.05 BG 1
- CT 106.02 BG 3
- CT 110.01 BG 1
- CT 110.01 BG 3
- CT 110.02 BG 2
- CT 111.03 BG 1
- CT 112.01 BG 1
- CT 112.02 BG 2

Individual Blocks

- |                             |                             |                             |
|-----------------------------|-----------------------------|-----------------------------|
| <u>CT 105.05 Block 2001</u> | <u>CT 105.05 Block 2009</u> | <u>CT 105.05 Block 2017</u> |
| <u>CT 105.05 Block 2002</u> | <u>CT 105.05 Block 2010</u> | <u>CT 105.05 Block 2018</u> |
| <u>CT 105.05 Block 2003</u> | <u>CT 105.05 Block 2011</u> | <u>CT 105.05 Block 2019</u> |
| <u>CT 105.05 Block 2004</u> | <u>CT 105.05 Block 2012</u> | <u>CT 105.05 Block 2020</u> |
| <u>CT 105.05 Block 2005</u> | <u>CT 105.05 Block 2013</u> | <u>CT 105.05 Block 2021</u> |
| <u>CT 105.05 Block 2006</u> | <u>CT 105.05 Block 2014</u> | <u>CT 105.05 Block 2022</u> |
| <u>CT 105.05 Block 2007</u> | <u>CT 105.05 Block 2015</u> | <u>CT 105.05 Block 2023</u> |
| <u>CT 105.05 Block 2008</u> | <u>CT 105.05 Block 2016</u> | <u>CT 105.05 Block 2024</u> |



CT 106.02 Block 1031  
CT 106.02 Block 1032  
CT 106.02 Block 1033  
CT 106.02 Block 1034  
CT 106.02 Block 1035  
CT 106.02 Block 1036  
CT 106.02 Block 1037  
CT 106.02 Block 1038  
CT 106.02 Block 1039  
CT 106.02 Block 1040  
CT 106.02 Block 1041  
CT 106.02 Block 1042  
CT 106.02 Block 1043  
CT 106.02 Block 1044  
CT 106.02 Block 1045  
CT 106.02 Block 1046  
CT 106.02 Block 1047  
CT 106.02 Block 2000  
CT 106.02 Block 2002  
CT 106.02 Block 2003  
CT 106.02 Block 2004  
CT 106.02 Block 2005  
CT 106.02 Block 2006  
CT 106.02 Block 2007  
CT 106.02 Block 2008  
CT 106.02 Block 2009  
CT 106.02 Block 2010  
CT 106.02 Block 2011  
CT 106.02 Block 2012  
CT 106.02 Block 2013  
CT 106.02 Block 2014  
CT 106.02 Block 2015  
CT 106.02 Block 2016  
CT 106.02 Block 2017  
CT 106.02 Block 2018  
CT 106.02 Block 2019  
CT 106.02 Block 2020  
CT 106.02 Block 2021  
CT 106.02 Block 2022  
CT 106.02 Block 2023  
CT 106.02 Block 2024  
CT 106.02 Block 2025  
CT 106.02 Block 2026  
CT 106.02 Block 2027  
CT 106.02 Block 2028  
CT 106.02 Block 2029  
CT 106.02 Block 2030  
CT 106.02 Block 2031  
CT 106.02 Block 2032  
CT 106.02 Block 2033

CT 106.02 Block 2035  
CT 106.02 Block 2036  
CT 106.02 Block 2037  
CT 106.02 Block 2038  
CT 106.02 Block 2039  
CT 106.02 Block 2040  
CT 106.02 Block 2041  
CT 106.02 Block 2042  
CT 106.02 Block 2043  
CT 106.02 Block 2044  
CT 106.02 Block 2045  
CT 106.03 Block 1001  
CT 106.03 Block 1005  
CT 106.03 Block 1006  
CT 106.03 Block 1007  
CT 106.03 Block 1008  
CT 106.03 Block 1009  
CT 106.03 Block 1010  
CT 106.03 Block 1011  
CT 106.03 Block 1012  
CT 106.03 Block 1013  
CT 106.03 Block 1014  
CT 106.03 Block 1015  
CT 106.03 Block 1016  
CT 106.03 Block 1017  
CT 106.03 Block 1018  
CT 106.03 Block 1019  
CT 106.03 Block 1020  
CT 106.03 Block 1021  
CT 106.03 Block 1022  
CT 106.03 Block 1023  
CT 106.03 Block 1024  
CT 106.03 Block 1025  
CT 106.03 Block 1026  
CT 106.03 Block 1027  
CT 106.03 Block 1028  
CT 106.03 Block 1029  
CT 106.03 Block 1030  
CT 106.03 Block 1031  
CT 106.03 Block 1032  
CT 106.03 Block 1033  
CT 106.03 Block 1034  
CT 106.03 Block 1035  
CT 106.03 Block 1036  
CT 106.03 Block 1037  
CT 106.03 Block 1038  
CT 106.03 Block 1039  
CT 106.03 Block 1040  
CT 106.03 Block 1041  
CT 106.03 Block 1042

CT 106.03 Block 1044  
CT 106.03 Block 1045  
CT 106.03 Block 1046  
CT 106.03 Block 1047  
CT 106.03 Block 1048  
CT 106.03 Block 1049  
CT 106.03 Block 1050  
CT 106.03 Block 1051  
CT 106.03 Block 1052  
CT 106.03 Block 1053  
CT 106.03 Block 1054  
CT 106.03 Block 1055  
CT 106.03 Block 1056  
CT 106.03 Block 1057  
CT 106.03 Block 1058  
CT 106.03 Block 1059  
CT 107.07 Block 1000  
CT 107.07 Block 1001  
CT 107.07 Block 1002  
CT 109.04 Block 1002  
CT 109.04 Block 1004  
CT 109.04 Block 1005  
CT 109.04 Block 1006  
CT 109.04 Block 1007  
CT 109.04 Block 1008  
CT 109.04 Block 1009  
CT 109.04 Block 1010  
CT 109.04 Block 1011  
CT 109.04 Block 1012  
CT 109.04 Block 1013  
CT 109.04 Block 1014  
CT 110.01 Block 2002  
CT 110.01 Block 2003  
CT 110.01 Block 2004  
CT 110.01 Block 2005  
CT 110.01 Block 2006  
CT 110.01 Block 2007  
CT 110.01 Block 2008  
CT 110.01 Block 2009  
CT 110.01 Block 2010  
CT 110.01 Block 2011  
CT 110.01 Block 2012  
CT 110.01 Block 2013  
CT 110.01 Block 2014  
CT 110.01 Block 2015  
CT 110.01 Block 2016  
CT 110.01 Block 2017  
CT 110.01 Block 2018  
CT 110.01 Block 2019  
CT 110.01 Block 2020



CT 110.01 Block 2022  
CT 110.01 Block 2023  
CT 110.01 Block 2024  
CT 110.01 Block 2025  
CT 110.01 Block 2026  
CT 110.01 Block 2027  
CT 110.01 Block 2028  
CT 110.01 Block 2029  
CT 110.01 Block 2030  
CT 110.01 Block 2031  
CT 110.01 Block 2032  
CT 110.01 Block 2033  
CT 110.01 Block 2035  
CT 110.02 Block 1002  
CT 110.02 Block 1003  
CT 110.02 Block 1004  
CT 110.02 Block 1005  
CT 110.02 Block 1006  
CT 110.02 Block 1007  
CT 110.02 Block 1008  
CT 110.02 Block 1009  
CT 110.02 Block 1010  
CT 110.02 Block 1012  
CT 110.02 Block 1013  
CT 110.02 Block 1014  
CT 110.02 Block 1015  
CT 110.02 Block 1016  
CT 110.02 Block 1017  
CT 110.02 Block 1018  
CT 110.02 Block 1019  
CT 110.02 Block 1020  
CT 110.02 Block 1021  
CT 110.02 Block 1022  
CT 110.02 Block 1023  
CT 110.02 Block 1024  
CT 110.02 Block 1025  
CT 110.02 Block 1026  
CT 110.02 Block 1027  
CT 110.02 Block 1028  
CT 110.02 Block 1029  
CT 110.02 Block 1030  
CT 110.02 Block 1031  
CT 110.02 Block 1032  
CT 110.02 Block 1033  
CT 110.02 Block 1034  
CT 110.02 Block 1035  
CT 110.02 Block 1036  
CT 110.02 Block 1037  
CT 111.03 Block 2000  
CT 111.03 Block 2001

CT 111.03 Block 2003  
CT 111.03 Block 2004  
CT 111.03 Block 2005  
CT 111.03 Block 2006  
CT 111.03 Block 2007  
CT 111.03 Block 2008  
CT 111.03 Block 2009  
CT 111.03 Block 2010  
CT 111.03 Block 2011  
CT 111.03 Block 2012  
CT 111.03 Block 2013  
CT 111.03 Block 2014  
CT 111.03 Block 2015  
CT 111.03 Block 2016  
CT 111.03 Block 2017  
CT 111.03 Block 2022  
CT 111.03 Block 2023  
CT 111.03 Block 2029  
CT 111.03 Block 2030  
CT 111.03 Block 2031  
CT 111.03 Block 2032  
CT 111.03 Block 2033  
CT 111.03 Block 2034  
CT 111.03 Block 2035  
CT 111.03 Block 2036  
CT 111.03 Block 2037  
CT 112.01 Block 2002  
CT 112.01 Block 2003  
CT 112.01 Block 2004  
CT 112.01 Block 2005  
CT 112.01 Block 2006  
CT 112.01 Block 2007  
CT 112.01 Block 2008  
CT 112.01 Block 2009  
CT 112.01 Block 2010  
CT 112.01 Block 2012  
CT 112.01 Block 2013  
CT 112.01 Block 2014  
CT 112.01 Block 2015  
CT 112.01 Block 2016  
CT 112.01 Block 2017  
CT 112.01 Block 2018  
CT 112.01 Block 2019  
CT 112.01 Block 2020  
CT 112.01 Block 2021  
CT 112.01 Block 2022  
CT 112.01 Block 2023  
CT 112.01 Block 2024  
CT 112.01 Block 2025  
CT 112.01 Block 2026

CT 112.01 Block 2028  
CT 112.01 Block 2029  
CT 112.01 Block 2030  
CT 112.01 Block 2031  
CT 112.01 Block 2032  
CT 112.01 Block 2033  
CT 112.01 Block 2034  
CT 112.01 Block 2035  
CT 112.01 Block 2036  
CT 112.01 Block 2037  
CT 112.01 Block 2038  
CT 112.01 Block 2039  
CT 112.01 Block 2040  
CT 112.01 Block 2041  
CT 112.01 Block 2042  
CT 112.01 Block 2043  
CT 112.01 Block 2044  
CT 112.01 Block 2045  
CT 112.01 Block 2046  
CT 112.01 Block 2047  
CT 112.01 Block 2048  
CT 112.01 Block 2049  
CT 112.01 Block 2050  
CT 112.01 Block 2051  
CT 112.02 Block 1000  
CT 112.02 Block 1001  
CT 112.02 Block 1002  
CT 112.02 Block 1003  
CT 112.02 Block 1004  
CT 112.02 Block 1005  
CT 112.02 Block 1006  
CT 112.02 Block 1007  
CT 112.02 Block 1008  
CT 112.02 Block 1009  
CT 112.02 Block 1010  
CT 112.02 Block 1011  
CT 112.02 Block 1012  
CT 112.02 Block 1013  
CT 112.02 Block 1014  
CT 112.02 Block 1015  
CT 112.02 Block 1016  
CT 112.02 Block 1017  
CT 112.02 Block 1018  
CT 112.02 Block 1019  
CT 112.02 Block 1020  
CT 112.02 Block 1021  
CT 112.02 Block 1022  
CT 112.02 Block 1023  
CT 112.02 Block 1024  
CT 112.02 Block 1025

CT 112.02 Block 1027  
CT 112.02 Block 1028  
CT 112.02 Block 1029  
CT 112.02 Block 1030  
CT 112.02 Block 1031  
CT 112.02 Block 1032  
CT 112.02 Block 1033  
CT 112.02 Block 1034  
CT 113.00 Block 2000  
CT 113.00 Block 2001  
CT 113.00 Block 2002  
CT 113.00 Block 2003  
CT 115.05 Block 1007  
CT 115.05 Block 2000  
CT 115.05 Block 2001  
CT 115.05 Block 2002  
CT 115.05 Block 2003  
CT 115.05 Block 2004  
CT 115.05 Block 2006  
CT 115.05 Block 2007  
CT 115.05 Block 2008  
CT 115.05 Block 3092  
CT 115.05 Block 3093  
CT 115.05 Block 3094  
CT 115.05 Block 3095  
CT 115.05 Block 3096  
CT 115.05 Block 3098  
CT 115.05 Block 3099  
CT 115.05 Block 3100  
CT 115.05 Block 3101  
CT 115.05 Block 3102  
CT 115.05 Block 3103  
CT 115.05 Block 3104  
CT 115.05 Block 3105  
CT 115.05 Block 3106  
CT 115.05 Block 3107  
CT 115.05 Block 3108  
CT 115.05 Block 3109  
CT 115.05 Block 3110  
CT 115.05 Block 3111  
CT 115.05 Block 3112  
CT 115.05 Block 3113  
CT 115.05 Block 3114  
CT 115.05 Block 3121  
CT 115.05 Block 3126  
CT 115.05 Block 3127  
CT 115.05 Block 3128  
CT 115.05 Block 3129  
CT 115.05 Block 3130  
CT 115.05 Block 3131  
CT 115.05 Block 3132

CT 115.05 Block 3133  
CT 115.05 Block 3134  
CT 115.05 Block 3135  
CT 115.05 Block 3136  
CT 115.05 Block 3137  
CT 115.05 Block 3138  
CT 115.05 Block 3139  
CT 115.05 Block 3140  
CT 115.05 Block 3141  
CT 115.05 Block 3142  
CT 115.05 Block 3143  
CT 115.05 Block 3144  
CT 115.05 Block 3145  
CT 115.05 Block 3146  
CT 115.05 Block 3147  
CT 115.05 Block 3148  
CT 115.05 Block 3149  
CT 115.05 Block 3150  
CT 115.05 Block 3151  
CT 115.05 Block 3152  
CT 115.05 Block 3153  
CT 115.05 Block 3154  
CT 115.05 Block 3155  
CT 115.05 Block 3156  
CT 115.05 Block 3157  
CT 115.05 Block 3158  
CT 115.05 Block 3159  
CT 115.05 Block 3160  
CT 115.05 Block 3161  
CT 115.05 Block 3162  
CT 115.05 Block 3163  
CT 115.05 Block 3164  
CT 115.05 Block 3165  
CT 115.05 Block 3166  
CT 115.05 Block 3167  
CT 115.05 Block 3168  
CT 115.05 Block 3169  
CT 115.05 Block 3170  
CT 115.05 Block 3171  
CT 115.05 Block 3172  
CT 115.05 Block 3173  
CT 115.05 Block 3174  
CT 115.05 Block 3175  
CT 115.05 Block 3176  
CT 115.05 Block 3177  
CT 115.05 Block 3178  
CT 115.05 Block 3179  
CT 115.05 Block 3194  
CT 130 Block 1174  
CT 130 Block 2038  
CT 130 Block 2039

CT 130 Block 2040  
CT 130 Block 2041  
CT 130 Block 2042  
CT 130 Block 2043  
CT 130 Block 2044  
CT 130 Block 2045  
CT 130 Block 2046  
CT 130 Block 2047  
CT 130 Block 2048  
CT 130 Block 2049  
CT 130 Block 2050  
CT 130 Block 2051  
CT 130 Block 2052  
CT 130 Block 2054  
CT 130 Block 2057  
CT 130 Block 2058  
CT 130 Block 2059  
CT 130 Block 2063  
CT 130 Block 2064  
CT 130 Block 2065  
CT 130 Block 2066  
CT 130 Block 2067  
CT 130 Block 2069  
CT 9900 Block 0005  
CT 9900 Block 0006  
CT 9900 Block 0007

**Section 2.60.040 Fourth supervisorial district.** The fourth supervisorial district shall be all that territory in the county included within the following described boundaries comprised of the following 2020 U.S. census blocks:

Beginning at the southwesterly corner of the City of Grover Beach said corner being on the ordinary high water line of the Pacific Ocean; thence, following along the city limits of Grover Beach South 69° 15' East crossing State Route 1 to an angle point in the city limits, continuing southerly, easterly and northerly along the city limits of Grover Beach and along the common line with the City of Arroyo Grande to the point common with the city limits of Pismo Beach; thence, leaving the city limits of Grover Beach and continuing northeasterly along the northwesterly city limits of Arroyo Grande along Oak Park Road and Noyes Road to the most northerly angle point of the City of Arroyo Grande; thence, leaving the city limits of Arroyo Grande and continuing northeasterly along Noyes Road (County Road No. 2003) to the intersection with La Teena Place (County Road No. 2206); thence, easterly along La Teena Place to the intersection with Karina Way (County Road No. 2205); thence southerly along Karina Way to the intersection with Phillips Road (County Road No. 2011); thence easterly along Phillips Road to the intersection with Carpenter Canyon Road (State Route 227); thence southerly along State Route 227 to the intersection with Royal Oak Place (County Road No. 2013); thence easterly along Royal Oak Place to the intersection with Corbett Canyon Road (County Road No. 2014); thence northerly along Corbett Canyon Road a distance of 0.4 mile more or less to the intersection with Paloma Place (County Road No. 2118); thence southerly and easterly along Paloma Place to the intersection with Stagecoach Road (County Road No. 2022); thence southwesterly along Stagecoach Road to the northwesterly projection of the northeasterly line of Parcel Map CO 97-122 filed in book 54 of Parcel Maps at page 8; thence southeasterly along the northeasterly line of said map and continuing southeasterly along the northeasterly line of Parcel Map CO 83-165 filed in book 37 of Parcel Maps at page 22; thence continuing southeasterly along the northeasterly line of Parcel Map CO 73-385 filed in Book 16 of Parcel Maps at page 43 to the northerly corner of Parcel D of said map; thence southwesterly along the northwesterly line and southeasterly along the southwesterly line of said Parcel D to Huasna Road (County Road No. 2023); thence northeasterly along Huasna Road to the intersection with Lopez Drive (County Road No. 2019); thence northeasterly along Lopez Drive a distance of 2.8 miles more or less to the intersection of Orcutt Road (County Road No. 2039); thence northwesterly along Orcutt Road 5.8 miles more or less to the intersection with Righetti Road (County Road No. 2038); thence northeasterly along Righetti Road to the southwesterly line of Lot 11 of Stratton's 1873 Map of Parts of the Ranchos Corral de Piedra Pismo - Bolsa de Chamisal filed in Book A of Maps at page 65; thence continuing northeasterly along the northerly projection of Righetti Road to the centerline of West Corral de Piedra Creek; thence northeasterly, northerly and northwesterly upstream along the centerline of West Corral de Piedra Creek to the east line of Section 32, Township 30 South, Range 13 East, M.D.M.; thence north 0.8 mile more or less to the northeast corner of said Section 32; thence east 4 miles more or less to the northeast corner of Section 36 of said Township; thence continuing east 2 miles more or less to the northeast corner of Section 32, Township 30 South, Range 14 East, M.D.M.; thence southeasterly to the northwest corner of Section 34 of said Township; thence south to the southwest corner of said Section 34; thence east 3 miles more or less to the southeast corner of said Township 30 South, Range 14 East; thence continuing east 6 miles more

or less to the northeast corner of Township 31 South, Range 15 East; thence southerly 4 miles more or less to the southwest corner of Section 19, easterly 5 miles more or less to the southeast corner of Section 23, south to the southeast corner of Section 26, and southeasterly to the southeast corner of Section 25, all in Township 31 South, Range 16 East; thence south to the southwest corner of Section 31, Township 31 South, Range 17 East; thence east 12 miles more or less to the southwest corner of Township 31 South, Range 19 East M.D.M.; thence south 6 miles more or less to the southwest corner of Township 32 South, Range 19 East, M.D.M.; thence east 24 miles more or less to the southeast corner of Township 32 South, Range 22 East and the San Luis Obispo County line; thence easterly and southerly along the county line to the southeast corner of Section 31 of Township 10 North, Range 24 West, S.B.M.; thence continuing westerly along the county line to the centerline of the Cuyama River; thence westerly along the centerline of the Cuyama River and the county line to the ordinary high water line of the Pacific Ocean and thence northerly along said ordinary high water line of the Pacific Ocean and county boundary to the point of beginning.

#### Whole Census Tracts

118  
119.03  
123.02  
123.05  
123.06  
124.03  
124.04  
124.05  
124.06

#### Whole Block Groups

CT 116 BG 1  
CT 119.01 BG 1  
CT 119.04 BG 1  
CT 119.04 BG 2  
CT 119.04 BG 3

#### Individual Blocks

CT 103.01 Block 2225  
CT 103.01 Block 2235  
CT 103.01 Block 2236  
CT 103.01 Block 2237  
CT 103.01 Block 2238  
CT 103.01 Block 2239  
CT 103.01 Block 2240  
CT 103.01 Block 2241  
CT 103.01 Block 2242  
CT 103.01 Block 2243  
CT 103.01 Block 2244  
CT 103.01 Block 2245  
CT 103.01 Block 2246  
CT 103.01 Block 2247  
CT 103.01 Block 2248  
CT 103.01 Block 2257  
CT 103.01 Block 2258  
CT 103.01 Block 2259  
CT 109.04 Block 2004  
CT 109.04 Block 2005  
CT 110.01 Block 2000  
CT 110.01 Block 2001  
CT 110.01 Block 2034  
CT 110.02 Block 1000  
CT 110.02 Block 1001  
CT 110.02 Block 1011  
CT 115.05 Block 1000  
CT 115.05 Block 1001  
CT 115.05 Block 1002  
CT 115.05 Block 1006  
CT 115.05 Block 1008  
CT 115.05 Block 1009  
CT 115.05 Block 1010  
CT 115.05 Block 1024  
CT 115.05 Block 1025  
CT 115.05 Block 1026  
CT 115.05 Block 2034  
CT 115.05 Block 2035  
CT 115.05 Block 2036  
CT 115.05 Block 2037  
CT 115.05 Block 3000  
CT 115.05 Block 3001  
CT 115.05 Block 3002  
CT 115.05 Block 3003  
CT 115.05 Block 3004  
CT 115.05 Block 3005  
CT 115.05 Block 3006  
CT 115.05 Block 3007  
CT 115.05 Block 3008  
CT 115.05 Block 3009

CT 115.05 Block 3011  
CT 115.05 Block 3012  
CT 115.05 Block 3013  
CT 115.05 Block 3014  
CT 115.05 Block 3015  
CT 115.05 Block 3016  
CT 115.05 Block 3017  
CT 115.05 Block 3018  
CT 115.05 Block 3019  
CT 115.05 Block 3020  
CT 115.05 Block 3021  
CT 115.05 Block 3022  
CT 115.05 Block 3023  
CT 115.05 Block 3024  
CT 115.05 Block 3025  
CT 115.05 Block 3028  
CT 115.05 Block 3029  
CT 115.05 Block 3030  
CT 115.05 Block 3031  
CT 115.05 Block 3032  
CT 115.05 Block 3033  
CT 115.05 Block 3034  
CT 115.05 Block 3035  
CT 115.05 Block 3036  
CT 115.05 Block 3037  
CT 115.05 Block 3038  
CT 115.05 Block 3039  
CT 115.05 Block 3040  
CT 115.05 Block 3041  
CT 115.05 Block 3042  
CT 115.05 Block 3043  
CT 115.05 Block 3044  
CT 115.05 Block 3045  
CT 115.05 Block 3046  
CT 115.05 Block 3047  
CT 115.05 Block 3048  
CT 115.05 Block 3049  
CT 115.05 Block 3050  
CT 115.05 Block 3051  
CT 115.05 Block 3052  
CT 115.05 Block 3053  
CT 115.05 Block 3054  
CT 115.05 Block 3055  
CT 115.05 Block 3056  
CT 115.05 Block 3057  
CT 115.05 Block 3058  
CT 115.05 Block 3059  
CT 115.05 Block 3060  
CT 115.05 Block 3061  
CT 115.05 Block 3062

CT 115.05 Block 3064  
CT 115.05 Block 3190  
CT 115.05 Block 3191  
CT 115.05 Block 3192  
CT 115.05 Block 3193  
CT 115.05 Block 3195  
CT 115.05 Block 3196  
CT 115.05 Block 3197  
CT 115.05 Block 3198  
CT 116.00 Block 2064  
CT 116.00 Block 2065  
CT 116.00 Block 2066  
CT 116.00 Block 2067  
CT 116.00 Block 2068  
CT 116.00 Block 2069  
CT 116.00 Block 2070  
CT 116.00 Block 2071  
CT 116.00 Block 2072  
CT 116.00 Block 2073  
CT 116.00 Block 2077  
CT 116.00 Block 2078  
CT 116.00 Block 2079  
CT 117.06 Block 1000  
CT 117.06 Block 1001  
CT 117.06 Block 1002  
CT 117.06 Block 1009  
CT 119.01 Block 2000  
CT 119.01 Block 2001  
CT 119.01 Block 2002  
CT 119.01 Block 2003  
CT 119.01 Block 2004  
CT 119.01 Block 2005  
CT 119.01 Block 2006  
CT 119.01 Block 2007  
CT 119.01 Block 2008  
CT 119.01 Block 2009  
CT 119.01 Block 2010  
CT 119.01 Block 2011  
CT 119.01 Block 2012  
CT 119.01 Block 2013  
CT 119.01 Block 2014  
CT 119.01 Block 2015  
CT 119.01 Block 2016  
CT 119.01 Block 2017  
CT 119.01 Block 2018  
CT 119.01 Block 2019  
CT 119.01 Block 2020  
CT 119.01 Block 2021  
CT 119.01 Block 2022  
CT 119.01 Block 2023



CT 127.08 Block 1129  
CT 127.08 Block 1130  
CT 127.08 Block 1131  
CT 127.08 Block 1132  
CT 127.08 Block 1133  
CT 127.08 Block 1134  
CT 127.08 Block 1135  
CT 127.08 Block 1136  
CT 127.08 Block 1137  
CT 127.08 Block 1138  
CT 127.08 Block 1139  
CT 127.08 Block 1140  
CT 127.08 Block 1141  
CT 127.08 Block 1142  
CT 127.08 Block 1143  
CT 127.08 Block 1145  
CT 127.08 Block 1146  
CT 127.08 Block 1147  
CT 127.08 Block 1148  
CT 127.08 Block 1149  
CT 127.08 Block 1150  
CT 127.08 Block 1151  
CT 127.08 Block 1152  
CT 127.08 Block 1153  
CT 127.08 Block 1154  
CT 127.08 Block 1155  
CT 127.08 Block 1156  
CT 127.08 Block 1157  
CT 127.08 Block 1158  
CT 127.08 Block 1159  
CT 127.08 Block 1160  
CT 127.08 Block 1161  
CT 127.08 Block 1162  
CT 127.08 Block 1163  
CT 127.08 Block 1164  
CT 127.08 Block 1165  
CT 127.08 Block 1166  
CT 127.08 Block 1167  
CT 127.08 Block 1168  
CT 127.08 Block 1169  
CT 127.08 Block 1170  
CT 127.08 Block 1171  
CT 127.08 Block 1172  
CT 127.08 Block 1173  
CT 127.08 Block 1174  
CT 127.08 Block 1175  
CT 127.08 Block 1176  
CT 127.08 Block 1177  
CT 127.08 Block 1178  
CT 127.08 Block 1179

CT 127.08 Block 1181  
CT 127.08 Block 1182  
CT 127.08 Block 1183  
CT 127.08 Block 1184  
CT 127.08 Block 1185  
CT 127.08 Block 1186  
CT 127.08 Block 1187  
CT 127.08 Block 1188  
CT 127.08 Block 1189  
CT 127.08 Block 1190  
CT 127.08 Block 1191  
CT 127.08 Block 1192  
CT 127.08 Block 1193  
CT 127.08 Block 1194  
CT 127.08 Block 1195  
CT 127.08 Block 1196  
CT 127.08 Block 1197  
CT 127.08 Block 1198  
CT 127.08 Block 1199  
CT 127.08 Block 1200  
CT 127.08 Block 1201  
CT 127.08 Block 1202  
CT 127.08 Block 1203  
CT 127.08 Block 1204  
CT 127.08 Block 1205  
CT 127.08 Block 1206  
CT 127.08 Block 1207  
CT 127.08 Block 1208  
CT 127.08 Block 1209  
CT 127.08 Block 1210  
CT 127.08 Block 1211  
CT 127.08 Block 1212  
CT 127.08 Block 1213  
CT 127.08 Block 1214  
CT 127.08 Block 1215  
CT 127.08 Block 1216  
CT 127.08 Block 1217  
CT 127.08 Block 1218  
CT 127.08 Block 1219  
CT 127.08 Block 1220  
CT 127.08 Block 1221  
CT 127.08 Block 1222  
CT 127.08 Block 1223  
CT 127.08 Block 1224  
CT 127.08 Block 1225  
CT 127.08 Block 1226  
CT 127.08 Block 1227  
CT 127.08 Block 1228  
CT 127.08 Block 1229  
CT 127.08 Block 1230

CT 127.08 Block 1232  
CT 127.08 Block 1233  
CT 127.08 Block 1234  
CT 127.08 Block 1235  
CT 127.08 Block 1236  
CT 127.08 Block 1237  
CT 127.08 Block 1238  
CT 127.08 Block 1239  
CT 127.08 Block 1240  
CT 127.08 Block 1241  
CT 127.08 Block 1242  
CT 127.08 Block 1243  
CT 127.08 Block 1244  
CT 127.08 Block 1245  
CT 127.08 Block 1246  
CT 127.08 Block 1247  
CT 127.08 Block 1248  
CT 127.08 Block 1249  
CT 127.08 Block 1250  
CT 127.08 Block 1251  
CT 127.08 Block 1252  
CT 127.08 Block 1253  
CT 127.08 Block 1254  
CT 127.08 Block 1255  
CT 127.08 Block 1256  
CT 127.08 Block 1257  
CT 127.08 Block 1258  
CT 127.08 Block 1259  
CT 127.08 Block 1260  
CT 127.08 Block 1261  
CT 127.08 Block 1262  
CT 127.08 Block 1263  
CT 127.08 Block 1264  
CT 127.08 Block 1265  
CT 127.08 Block 1266  
CT 127.08 Block 1267  
CT 127.08 Block 1268  
CT 127.08 Block 1269  
CT 127.08 Block 1270  
CT 127.08 Block 1271  
CT 127.08 Block 1272  
CT 127.08 Block 1273  
CT 127.08 Block 1274  
CT 127.08 Block 1275  
CT 127.08 Block 1276  
CT 127.08 Block 1277  
CT 127.08 Block 1278  
CT 127.08 Block 1279  
CT 127.08 Block 1280  
CT 127.08 Block 1281

CT 127.08 Block 1283  
CT 127.08 Block 1284  
CT 127.08 Block 1285  
CT 127.08 Block 1286  
CT 127.08 Block 1287  
CT 127.08 Block 1288  
CT 127.08 Block 1289  
CT 127.08 Block 1290  
CT 127.08 Block 1291  
CT 127.08 Block 1292  
CT 127.08 Block 1293  
CT 127.08 Block 1294  
CT 127.08 Block 1295  
CT 127.08 Block 1296  
CT 127.08 Block 1297  
CT 127.08 Block 1298  
CT 127.08 Block 1299  
CT 127.08 Block 1300  
CT 127.08 Block 1301  
CT 127.08 Block 1302  
CT 127.08 Block 1303  
CT 127.08 Block 1304  
CT 127.08 Block 1305  
CT 127.08 Block 1306  
CT 127.08 Block 1307  
CT 127.08 Block 1308  
CT 127.08 Block 1309  
CT 127.08 Block 1310  
CT 127.08 Block 1311  
CT 127.08 Block 1312  
CT 127.08 Block 1313  
CT 127.08 Block 1314  
CT 127.08 Block 1315  
CT 127.08 Block 1316  
CT 127.08 Block 1317  
CT 127.08 Block 1318  
CT 127.08 Block 1319  
CT 127.08 Block 1320  
CT 127.08 Block 1321  
CT 127.08 Block 1322  
CT 127.08 Block 1323  
CT 127.08 Block 1324  
CT 127.08 Block 1325  
CT 127.08 Block 1326  
CT 127.08 Block 1327  
CT 127.08 Block 1328  
CT 127.08 Block 1329  
CT 127.08 Block 1330  
CT 127.08 Block 1331  
CT 127.08 Block 1332

CT 127.08 Block 1334  
CT 127.08 Block 1335  
CT 127.08 Block 1336  
CT 127.08 Block 1337  
CT 127.08 Block 1338  
CT 127.08 Block 1339  
CT 127.08 Block 1340  
CT 127.08 Block 1341  
CT 127.08 Block 1342  
CT 127.08 Block 1343  
CT 127.08 Block 1344  
CT 127.08 Block 1345  
CT 127.08 Block 1346  
CT 127.08 Block 1347  
CT 127.08 Block 1348  
CT 127.08 Block 1349  
CT 127.08 Block 1350  
CT 127.08 Block 1351  
CT 127.08 Block 1352  
CT 127.08 Block 1353  
CT 127.08 Block 1354  
CT 127.08 Block 1355  
CT 127.08 Block 1356  
CT 127.08 Block 1357  
CT 127.08 Block 1358  
CT 127.08 Block 1359  
CT 127.08 Block 1360  
CT 127.08 Block 1361  
CT 127.08 Block 1362  
CT 127.08 Block 1363  
CT 127.08 Block 1364  
CT 127.08 Block 1365  
CT 127.08 Block 1366  
CT 127.08 Block 1367  
CT 127.08 Block 1368  
CT 127.08 Block 1369  
CT 127.08 Block 1370  
CT 127.08 Block 1371  
CT 127.08 Block 1372  
CT 127.08 Block 1373  
CT 127.08 Block 1374  
CT 127.08 Block 1375  
CT 127.08 Block 1376  
CT 127.08 Block 1377  
CT 127.08 Block 1378  
CT 127.08 Block 1379  
CT 127.08 Block 1380  
CT 127.08 Block 1381  
CT 127.08 Block 1382  
CT 127.08 Block 1383

CT 127.08 Block 1385  
CT 127.08 Block 1386  
CT 127.08 Block 1387  
CT 127.08 Block 1388  
CT 127.08 Block 1389  
CT 127.08 Block 1390  
CT 127.08 Block 1391  
CT 127.08 Block 1392  
CT 127.08 Block 1393  
CT 127.08 Block 1394  
CT 127.08 Block 1395  
CT 127.08 Block 1396  
CT 127.08 Block 1397  
CT 127.08 Block 1398  
CT 127.08 Block 1399  
CT 127.08 Block 1400  
CT 127.08 Block 1401  
CT 127.08 Block 1402  
CT 127.08 Block 1403  
CT 127.08 Block 1404  
CT 127.08 Block 1405  
CT 127.08 Block 1406  
CT 127.08 Block 1407  
CT 127.08 Block 1408  
CT 127.08 Block 1409  
CT 127.08 Block 1410  
CT 127.08 Block 1411  
CT 127.08 Block 1412  
CT 127.08 Block 1413  
CT 127.08 Block 1414  
CT 127.08 Block 1415  
CT 127.08 Block 1416  
CT 127.08 Block 1417  
CT 127.08 Block 1418  
CT 127.08 Block 1419  
CT 127.08 Block 1420  
CT 127.08 Block 1421  
CT 127.08 Block 1422  
CT 127.08 Block 1423  
CT 127.08 Block 1424  
CT 127.08 Block 1425  
CT 127.08 Block 1426  
CT 127.08 Block 1427  
CT 127.08 Block 1428  
CT 127.08 Block 1429  
CT 127.08 Block 1430  
CT 127.08 Block 1431  
CT 127.08 Block 1432  
CT 127.08 Block 1433  
CT 127.08 Block 1434



CT 127.08 Block 1435  
CT 127.08 Block 1436  
CT 127.08 Block 1437  
CT 127.08 Block 1438  
CT 127.08 Block 1439  
CT 127.08 Block 1440  
CT 127.08 Block 1441  
CT 127.08 Block 1442  
CT 127.08 Block 1443  
CT 127.08 Block 1444  
CT 127.08 Block 1445  
CT 127.08 Block 1446  
CT 127.08 Block 1447  
CT 127.08 Block 1448  
CT 127.08 Block 1449  
CT 127.08 Block 1450  
CT 127.08 Block 1451  
CT 127.08 Block 1452  
CT 127.08 Block 1453  
CT 127.08 Block 1454  
CT 127.08 Block 1455  
CT 127.08 Block 1456  
CT 127.08 Block 1457  
CT 127.08 Block 1458  
CT 127.08 Block 1459  
CT 127.08 Block 1460  
CT 127.08 Block 1461

CT 127.08 Block 1462  
CT 127.08 Block 1463  
CT 127.08 Block 1464  
CT 127.08 Block 1465  
CT 127.08 Block 1466  
CT 127.08 Block 1467  
CT 127.08 Block 1468  
CT 127.08 Block 1469  
CT 127.08 Block 1470  
CT 127.08 Block 1471  
CT 127.08 Block 1472  
CT 127.08 Block 1473  
CT 127.08 Block 1474  
CT 127.08 Block 1475  
CT 127.08 Block 1476  
CT 127.08 Block 1477  
CT 127.08 Block 1478  
CT 127.08 Block 1479  
CT 127.08 Block 1480  
CT 127.08 Block 1481  
CT 127.08 Block 1482  
CT 127.08 Block 1483  
CT 127.08 Block 1484  
CT 127.08 Block 1485  
CT 127.08 Block 1486  
CT 127.08 Block 1487  
CT 127.08 Block 1488

CT 127.08 Block 1489  
CT 127.08 Block 1490  
CT 127.08 Block 1491  
CT 127.08 Block 1492  
CT 127.08 Block 1493  
CT 127.08 Block 1494  
CT 127.08 Block 1495  
CT 127.08 Block 1496  
CT 127.08 Block 1497  
CT 127.08 Block 1498  
CT 127.08 Block 1499  
CT 127.08 Block 1500  
CT 127.08 Block 1501  
CT 127.08 Block 1502  
CT 127.08 Block 1503  
CT 127.08 Block 1504  
CT 127.08 Block 1505  
CT 127.08 Block 1506  
CT 127.08 Block 1507  
CT 127.08 Block 1508  
CT 127.08 Block 1509  
CT 127.08 Block 1511  
CT 127.08 Block 1512  
CT 127.08 Block 1513  
CT 127.08 Block 1514  
CT 127.08 Block 1515  
CT 9900 Block 0014

**Section 2.60.050 Fifth supervisorial district.** The fifth supervisorial district shall be all that territory in the county included within the following described boundaries comprised of the following 2020 U.S. census blocks:

~~Beginning at the southeast corner of Section 35 of Township 28 South, Range 18 East M.D.M., on the Seventh Standard Parallel South, also being a point on the east boundary of the County of San Luis Obispo as defined in Section 23140 of the Government Code; thence, leaving said county boundary west along said Seventh Standard Parallel South a distance of 15 miles more or less to the northeast corner of Section 5, Township 29 South, Range 16 East; thence south one mile to the southeast corner of said Section 5; thence west 4800 feet more or less along the south line of Section 5 to State Route 58; thence northwesterly along State Route 58 five miles more or less to the intersection with the west line of Section 27, Township 28 South, Range 15 East; thence north 4.5 miles more or less to the northwest corner of Section 3 of said Township; thence west 2.5 miles more or less to the intersection with Shedd Canyon Road; thence, northwesterly along Shedd Canyon Road 4.0 miles more or less to the intersection with State Route 41; thence westerly and southwesterly along State Route 41 a distance of 3.0 miles more or less to the intersection with the south line of Section 16, Township 27 South, Range 14 East; thence west to the southwest corner of said Section 16; thence north to the northeast corner of the south one-half of Section 8 of said Township; thence west 1.0 mile to the northwest corner of said south one-half of Section 8; thence north 0.5 mile to the northwest corner of said Section 8; thence west 1.0 mile to the~~

southwest corner of Section 6 of said Township; thence north 1.0 mile to the northwest corner of said Section 6 being the southeast corner of Tract 20 filed in book 5 of Maps at page 38; thence continuing north to the northeast corner of Tract 20; thence west 0.5 mile to the southeast corner of Tract 6 filed in book 5 of Maps at page 29; thence north 0.5 mile to the northeast corner of Tract 6; thence west 0.5 miles to the northwest corner of Tract 6 also being the northeast corner of Tract 16 filed in book 5 of Maps at page 32; thence continuing west 1.0 mile to the northwest corner of Tract 3 filed in book 5 of Maps at page 27; thence south 0.5 mile to the northeast corner of Tract 21 filed in book 5 of Maps at page 41; thence west along the north line of Tract 21 to the intersection with Geneseo Road (County Road No. 5216) thence westerly and northerly along Geneseo Road to the intersection with Union Road (County Road No. 5230) thence westerly along Union Road to the intersection with Penman Springs Road (County Road No. 5233); thence southerly along Penman Springs Road to the southwest corner of the southeast one quarter of Section 31, Township 26 South, Range 13 East, M.D.M.; thence southeasterly along the southwesterly lines of Lots 13, 12, 11, 16, 17, 18 and 21 of the Map of the Dresser Subdivision No. 1 filed in Book 2 of Maps at Page 77 to the northerly line of Parcel Map COAL 98-0087 filed in Book 56 of Parcel Maps at Page 16; thence southwesterly along the northwesterly line and south along the west line of said Parcel Map and continuing south to the southwest corner of Lot 100 at point SY 13 of the Dunning and Dresser Tract filed in book A of Maps at page 119; thence easterly to the southeast corner of Lot 101 of said Tract; thence southerly along the west line of said Tract to the intersection with Creston Road (County Road No. 4067); thence westerly along Creston Road to the intersection with Neal Spring Road (County Road No. 5206); thence westerly and southwesterly along Neal Spring Road to the intersection with Vaquero Road (County Road No. 5205) thence westerly and southerly along Vaquero Road to the intersection with El Pomar Drive (County Road No. 5203); thence southwesterly along El Pomar Drive to the intersection with Templeton Road (County Road No. 4083); thence westerly along Templeton Road to the westerly line of the Eureka Rancho filed in book A of Maps at page 91 being the centerline of the Salinas River; thence southerly and easterly along the centerline of the Salinas River to the northerly corner of Tract 2498 filed in book 23 of Maps at pages 87-92 and the most northerly corner of the Atascadero city limits; thence southwesterly, southeasterly, and northwesterly along the Atascadero city limits to point "M-12" at the northerly corner of Block 50 as shown on the map of Atascadero Colony filed in book 3AC of Maps at page 67; thence southwesterly along the northwesterly line of the Atascadero Colony and continuing along the Atascadero city limits to the southwesterly corner of Parcel 5a of Parcel Map AT 81-261 filed in book 31 of Parcel Maps at page 95; thence leaving the city limits and continuing southwesterly along the southwesterly projection of said northwesterly line to the southwesterly line of the Rancho La Asuncion as shown on the Plat of the Rancho Asuncion as confirmed to Pedro Estrada surveyed in 1861; thence southeasterly along said southwesterly line of said Rancho to the intersection with State Route 41; thence easterly along Route 41 to the intersection with Old Morro Road West (County Road No. 4004); thence southerly along Old Morro Road West to the intersection with San Miguel Road as shown on the map of Atascadero Colony filed in book 3AC of Maps at page 115; thence southerly along San Miguel Road and the southerly projection thereof to the southwesterly line of Rancho Asuncion; thence southeasterly along the southwesterly line of Rancho Asuncion to the east line of Township 28 South, Range 11 East, M.D.M.; thence south along said east line to the southeast corner of said Township 28 South, Range 11 East; thence west along the south line of said Township to the northeast corner of Township 29 South, Range 11 East; thence south

along the east line of said Township to the southeast corner of Section 12 of said Township; thence continuing south to the intersection with TV Tower Road; thence southeasterly along TV Tower Road 7.5 miles more or less to the west line of Section 1, Township 30 South, Range 12 East; thence south along said west line to the northwest corner of Lot 1 of said Section 1; thence east along the north line of said Lot 1 and continuing east to the intersection with U.S. Highway 101; thence southerly along U.S. Highway 101 approximately 4.1 miles to the intersection with Miossi Road; thence westerly along Miossi Road 0.5 mile more or less to the city limits of San Luis Obispo; thence northerly and westerly along the city limits of San Luis Obispo to the easterly end of Slack Street; thence continuing along the city limits of San Luis Obispo westerly along Slack Street to the intersection with Grand Avenue; thence leaving the city limits northerly and northwesterly along Grand Avenue to the intersection with Perimeter Road; thence northerly and westerly along Perimeter Road to the intersection with Via Carta; thence northerly along Via Carta to the intersection with Highland Drive; thence southwesterly along Highland Drive to the intersection with North Chorro Street; thence southerly along North Chorro Street to the intersection with Ferrini Road and the city limits of San Luis Obispo; thence entering the city of San Luis Obispo southerly along Ferrini Road to the intersection with Foothill Boulevard; thence west on Foothill Boulevard to the intersection with South Tassajara Drive; thence south along South Tassajara Drive to the intersection with Luneta Drive; thence west along Luneta Drive to the intersection with Hermosa Way; thence southwesterly along Hermosa Way to the intersection with La Entrada Avenue; thence southeasterly along La Entrada Avenue to the southerly line of Tract 127 filed in book 5 of Maps at page 114; thence northeasterly and southeasterly along the southerly line of Tract 127 to the San Luis Obispo city limits; thence easterly and southerly along the city limits to the northerly line of Parcel 2 of COAL 07-0007 as recorded June 26, 2008 in Document Number 2008033187 in the San Luis Obispo County Recorder's office to a point being the westerly terminus of the line described in said document as "South  $83^{\circ}26'00''$  West 127.73 feet"; thence entering the city of San Luis Obispo easterly along said line to post "L. No. 4" being the westerly corner of the parcel described in the deed recorded October 3, 1918 in book 123 of Deeds at page 430, thence northeasterly along the northwesterly line of said parcel to post G.L. No. 2 as described in said deed; thence southeasterly along the northeasterly line of said parcel and the southeasterly projection thereof to the intersection with U.S. Highway 101; thence northeasterly along Marsh Street 1.2 miles more or less to the intersection with California Boulevard; thence easterly along California Boulevard to the intersection with San Luis Drive; thence northeasterly along San Luis Drive to the intersection with Andrews Street; thence southeasterly and easterly along Andrews Street to the northwesterly projection of the northerly line of Lot 3 of Tract 940 filed in book 12 of Maps at page 67; thence southeasterly along said northerly line to the northeast corner of said Lot 3; thence northeasterly to the northwest corner of the northeast one quarter of the southwest one quarter of Section 25, Township 30 South, Range 12 East and the city limits of San Luis Obispo; thence leaving the city of San Luis Obispo east to the northeast corner of the southeast one quarter of said Section 25; thence south 0.5 mile to the southwest corner of Section 30, Township 30 South, Range 13 East; thence east 6 miles more or less to the northeast corner of Section 36 of said Township; thence continuing east 2 miles more or less to the northeast corner of Section 32, Township 30 South, Range 14 East, M.D.M.; thence southeasterly to the northwest corner of Section 34 of said Township; thence south to the southwest corner of said Section 34; thence east 3 miles more or less to the

southeast corner of said Township 30 South, Range 14 East; thence continuing east 6 miles more or less to the northeast corner of Township 31 South, Range 15 East; thence southerly 4 miles more or less to the southwest corner of Section 19, easterly 5 miles more or less to the southeast corner of Section 23, south to the southeast corner of Section 26, and southeasterly to the southeast corner of Section 25, all in Township 31 South, Range 16 East; thence south to the southwest corner of Section 31, Township 31 South, Range 17 East; thence east 12 miles more or less to the southwest corner of Township 31 South, Range 19 East, M.D.M.; thence south 6 miles more or less to the southwest corner of Township 32 South, Range 19 East, M.D.M.; thence east 24 miles more or less to the southeast corner of Township 32 South, Range 22 East and the San Luis Obispo County line; thence northerly and westerly along the easterly line of San Luis Obispo County to the point of beginning.

#### Whole Census Tracts

107.01

107.03

115.01

117.04

117.05

120.01

120.02

121.02

122.01

122.02

#### Whole Block Groups

CT 107.07 BG 2

CT 107.07 BG 3

CT 107.07 BG 4

CT 107.07 BG 5

CT 113 BG 1

CT 113 BG 3

CT 113 BG 4

CT 113 BG 5

CT 116 BG 3

CT 117.06 BG 2

#### Individual Blocks

CT 106.02 Block 1029  
CT 107.07 Block 1003  
CT 107.07 Block 1004  
CT 107.07 Block 1005  
CT 107.07 Block 1006  
CT 107.07 Block 1007  
CT 107.07 Block 1008  
CT 107.07 Block 1009  
CT 107.07 Block 1010  
CT 107.07 Block 1011  
CT 107.07 Block 1012  
CT 107.07 Block 1013  
CT 107.07 Block 1014  
CT 107.07 Block 1015  
CT 107.07 Block 1016  
CT 107.07 Block 1017  
CT 107.07 Block 1018  
CT 107.07 Block 1019  
CT 107.07 Block 1020  
CT 107.07 Block 1021  
CT 107.07 Block 1022  
CT 107.07 Block 1023  
CT 107.07 Block 1024  
CT 107.07 Block 1025  
CT 107.07 Block 1026  
CT 107.07 Block 1027  
CT 107.07 Block 1028  
CT 107.07 Block 1029  
CT 107.07 Block 1030  
CT 107.07 Block 1031  
CT 107.07 Block 1032  
CT 107.07 Block 1033  
CT 107.07 Block 1034  
CT 111.03 Block 2018  
CT 111.03 Block 2019  
CT 111.03 Block 2020  
CT 111.03 Block 2021  
CT 111.03 Block 2024  
CT 111.03 Block 2025  
CT 111.03 Block 2026  
CT 111.03 Block 2027  
CT 111.03 Block 2028  
CT 112.02 Block 1026  
CT 113 Block 2004

CT 113 Block 2005  
CT 113 Block 2006  
CT 113 Block 2007  
CT 113 Block 2008  
CT 113 Block 2009  
CT 113 Block 2010  
CT 113 Block 2011  
CT 113 Block 2012  
CT 113 Block 2013  
CT 113 Block 2014  
CT 113 Block 2015  
CT 113 Block 2016  
CT 113 Block 2017  
CT 113 Block 2018  
CT 113 Block 2019  
CT 113 Block 2020  
CT 113 Block 2021  
CT 113 Block 2022  
CT 113 Block 2023  
CT 113 Block 2024  
CT 113 Block 2025  
CT 113 Block 2026  
CT 113 Block 2027  
CT 113 Block 2028  
CT 113 Block 2029  
CT 113 Block 2030  
CT 113 Block 2031  
CT 113 Block 2032  
CT 113 Block 2033  
CT 113 Block 2034  
CT 113 Block 2035  
CT 113 Block 2036  
CT 113 Block 2037  
CT 113 Block 2038  
CT 113 Block 2039  
CT 113 Block 2040  
CT 113 Block 2041  
CT 113 Block 2042  
CT 113 Block 2043  
CT 113 Block 2044  
CT 113 Block 2045  
CT 113 Block 2046  
CT 115.05 Block 1003  
CT 115.05 Block 1004

CT 115.05 Block 1005  
CT 115.05 Block 1011  
CT 115.05 Block 1012  
CT 115.05 Block 1013  
CT 115.05 Block 1014  
CT 115.05 Block 1015  
CT 115.05 Block 1016  
CT 115.05 Block 1017  
CT 115.05 Block 1018  
CT 115.05 Block 1019  
CT 115.05 Block 1020  
CT 115.05 Block 1021  
CT 115.05 Block 1022  
CT 115.05 Block 1023  
CT 115.05 Block 1027  
CT 115.05 Block 2005  
CT 115.05 Block 2009  
CT 115.05 Block 2010  
CT 115.05 Block 2011  
CT 115.05 Block 2012  
CT 115.05 Block 2013  
CT 115.05 Block 2014  
CT 115.05 Block 2015  
CT 115.05 Block 2016  
CT 115.05 Block 2017  
CT 115.05 Block 2018  
CT 115.05 Block 2019  
CT 115.05 Block 2020  
CT 115.05 Block 2021  
CT 115.05 Block 2022  
CT 115.05 Block 2023  
CT 115.05 Block 2024  
CT 115.05 Block 2025  
CT 115.05 Block 2026  
CT 115.05 Block 2027  
CT 115.05 Block 2028  
CT 115.05 Block 2029  
CT 115.05 Block 2030  
CT 115.05 Block 2031  
CT 115.05 Block 2032  
CT 115.05 Block 2033  
CT 115.05 Block 2038  
CT 115.05 Block 2039  
CT 115.05 Block 2040

CT 115.05 Block 2041  
CT 115.05 Block 2042  
CT 115.05 Block 2043  
CT 115.05 Block 2044  
CT 115.05 Block 2045  
CT 115.05 Block 2046  
CT 115.05 Block 2047  
CT 116 Block 2000  
CT 116 Block 2001  
CT 116 Block 2002  
CT 116 Block 2003  
CT 116 Block 2004  
CT 116 Block 2005  
CT 116 Block 2006  
CT 116 Block 2007  
CT 116 Block 2008  
CT 116 Block 2009  
CT 116 Block 2010  
CT 116 Block 2011  
CT 116 Block 2012  
CT 116 Block 2013  
CT 116 Block 2014  
CT 116 Block 2015  
CT 116 Block 2016  
CT 116 Block 2017  
CT 116 Block 2018  
CT 116 Block 2019  
CT 116 Block 2020  
CT 116 Block 2021  
CT 116 Block 2022  
CT 116 Block 2023  
CT 116 Block 2024  
CT 116 Block 2025  
CT 116 Block 2026  
CT 116 Block 2027  
CT 116 Block 2028  
CT 116 Block 2029  
CT 116 Block 2030  
CT 116 Block 2031  
CT 116 Block 2032  
CT 116 Block 2033  
CT 116 Block 2034  
CT 116 Block 2035  
CT 116 Block 2036

CT 116 Block 2037  
CT 116 Block 2038  
CT 116 Block 2039  
CT 116 Block 2040  
CT 116 Block 2041  
CT 116 Block 2042  
CT 116 Block 2043  
CT 116 Block 2044  
CT 116 Block 2045  
CT 116 Block 2046  
CT 116 Block 2047  
CT 116 Block 2048  
CT 116 Block 2049  
CT 116 Block 2050  
CT 116 Block 2051  
CT 116 Block 2052  
CT 116 Block 2053  
CT 116 Block 2054  
CT 116 Block 2055  
CT 116 Block 2056  
CT 116 Block 2057  
CT 116 Block 2058  
CT 116 Block 2059  
CT 116 Block 2060  
CT 116 Block 2061  
CT 116 Block 2062  
CT 116 Block 2063  
CT 116 Block 2074  
CT 116 Block 2075  
CT 116 Block 2076  
CT 116 Block 2080  
CT 116 Block 2081  
CT 116 Block 2082  
CT 116 Block 2083  
CT 116 Block 2084  
CT 117.06 Block 1003  
CT 117.06 Block 1004  
CT 117.06 Block 1005  
CT 117.06 Block 1006  
CT 117.06 Block 1007  
CT 117.06 Block 1008  
CT 117.06 Block 1010  
CT 117.06 Block 1011  
CT 117.06 Block 1012

CT 117.06 Block 1013  
CT 117.06 Block 1014  
CT 117.06 Block 1015  
CT 117.06 Block 1016  
CT 117.06 Block 1017  
CT 117.06 Block 1018  
CT 117.06 Block 1019  
CT 117.06 Block 1020  
CT 117.06 Block 1021  
CT 117.06 Block 1022  
CT 117.06 Block 1023  
CT 117.06 Block 1024  
CT 117.06 Block 1025  
CT 117.06 Block 1026  
CT 117.06 Block 1027  
CT 117.06 Block 1028  
CT 117.06 Block 1029  
CT 117.06 Block 1030  
CT 117.06 Block 1031  
CT 117.06 Block 1032  
CT 117.06 Block 1033  
CT 117.06 Block 1034  
CT 117.06 Block 1035  
CT 117.06 Block 1036  
CT 117.06 Block 1037  
CT 117.06 Block 1038  
CT 117.06 Block 1039  
CT 117.06 Block 1040  
CT 117.06 Block 1041  
CT 117.06 Block 1042  
CT 117.06 Block 1043  
CT 117.06 Block 1044  
CT 117.06 Block 1045  
CT 117.06 Block 1046  
CT 117.06 Block 1047  
CT 117.06 Block 1048  
CT 117.06 Block 1049  
CT 117.06 Block 1050  
CT 117.06 Block 1051  
CT 117.06 Block 1052  
CT 119.01 Block 2036  
CT 119.01 Block 2037  
CT 119.01 Block 2039  
CT 119.01 Block 2040

CT 119.01 Block 2041  
CT 119.04 Block 4011  
CT 119.04 Block 4012  
CT 130 Block 2053  
CT 130 Block 2055  
CT 130 Block 2056  
CT 130 Block 2060  
CT 130 Block 2061  
CT 130 Block 2062  
CT 130 Block 2068  
CT 130 Block 2070  
CT 130 Block 2071  
CT 130 Block 2072  
CT 130 Block 2073  
CT 130 Block 2074

CT 130 Block 2075  
CT 130 Block 2076  
CT 130 Block 2077  
CT 130 Block 2078  
CT 130 Block 2079  
CT 130 Block 2080  
CT 130 Block 2081  
CT 130 Block 2082  
CT 130 Block 2083  
CT 130 Block 2084  
CT 130 Block 2085  
CT 130 Block 2086  
CT 130 Block 2087  
CT 130 Block 2088  
CT 130 Block 2089

CT 130 Block 2090  
CT 130 Block 2091  
CT 130 Block 2092  
CT 130 Block 2093  
CT 130 Block 2094  
CT 130 Block 2095  
CT 130 Block 2096  
CT 9900 Block 0008  
CT 9900 Block 0009  
CT 9900 Block 0010  
CT 9900 Block 0011  
CT 9900 Block 0012  
CT 9900 Block 0013

**SECTION 2:** The supervisorial districts as described above are depicted on Final Map 74786 attached hereto as Exhibit A and incorporated herein by reference. In the event of a conflict between the census block description and Final Map 74786, the census block description shall prevail.

**INTRODUCED** at a regular meeting of the Board of Supervisors held on the 7<sup>th</sup> day of December, 2021, and **PASSED AND ADOPTED** by the Board of Supervisors of the County of San Luis Obispo, State of California on the 14<sup>th</sup> day of December, 2021, by the following roll call vote, to wit:

AYES: Supervisors John Peschong, Debbie Arnold and Chairperson Lynn Compton

NOES: Supervisors Bruce S. Gibson and Dawn Ortiz-Legg

ABSENT: None

ABSTAINING: None

*Lynn Compton*

Lynn Compton  
Chairperson of the Board of Supervisors  
County of San Luis Obispo, State of California

ATTEST:

WADE HORTON  
Ex-Officio Clerk of the Board of Supervisors  
County of San Luis Obispo, State of California

By: *Niki Martin*  
Deputy Clerk

ORDINANCE CODE PROVISIONS APPROVED AS  
TO FORM AND CODIFICATION:

By: /s/ RITA L. NEAL  
County Counsel

Dated: December 2, 2021

STATE OF CALIFORNIA        )        ss.  
COUNTY OF SAN LUIS OBISPO)

I, **WADE HORTON**, Ex-Officio Clerk of the Board of Supervisors thereof, do hereby certify the foregoing to be a full, true and correct copy of an order entered in the minutes of said Board of Supervisors, and now remaining of record in my office.

Witness, my hand and seal of said Board of Supervisors on January 5, 2022.

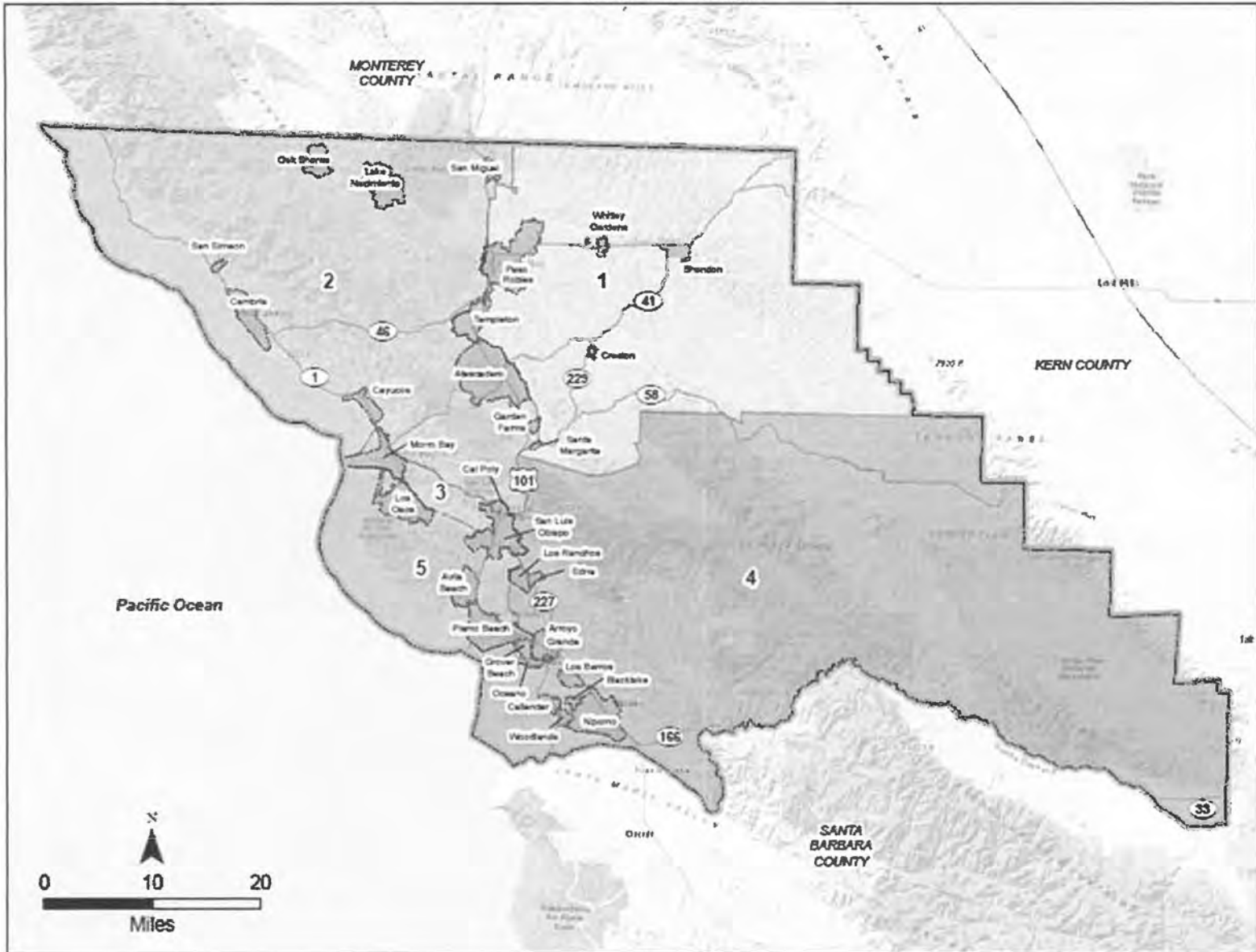
**WADE HORTON,**  
Ex-Officio Clerk of the Board of Supervisors

By: *Niki Martin*  
Deputy Clerk



**EXHIBIT A**

**[MAP OF ADOPTED DISTRICT LINES]**



**2021 San Luis Obispo County Supervisorial Districts**


**Legend**

- San Luis Obispo County Boundary
- Freeways and Highways
- City/Town Boundary
- Supervisorial District Boundaries**
- District 1
- District 2
- District 3
- District 4
- District 5

District	Population	Deviation
1	55,880	0.07%
2	53,304	-4.55%
3	56,045	0.36%
4	56,465	1.11%
5	57,522	3.01%

NOTE: This map is a graphical representation of the Census Data Tracts and Blocks listed for each district. The listing of Census Data shall be paramount in any discrepancy between this map and that data listing.

**CERTIFIED BY  
COUNTY SURVEYOR**

  
EDWARD M. READING, P.L.S. 8861  
12892871



# **EXHIBIT B**

C-Def 10.10.21

**IN THE BOARD OF SUPERVISORS**  
COUNTY OF SAN LUIS OBISPO, STATE OF CALIFORNIA

Tuesday December 14, 2021

PRESENT: Supervisors John Peschong, Bruce S. Gibson, Dawn Ortiz-Legg, Debbie Arnold and  
Chairperson Lynn Compton

ABSENT: None

**RESOLUTION NO. 2021-311**

**A RESOLUTION AND FINDINGS IN SUPPORT OF THE ADJUSTED BOUNDARIES OF ALL  
SUPERVISORIAL DISTRICTS  
OF  
THE COUNTY OF SAN LUIS OBISPO**

The following resolution is now offered and read:

**WHEREAS**, the U.S. Census Bureau (Bureau) is required by Article I, Section 2, of the U.S. Constitution to conduct an accurate count of the population every ten years;

**WHEREAS**, California Elections Code Section 21500 et seq. requires that "[f]ollowing each federal decennial census, and using that census as a basis, the board shall adjust the boundaries of any or all of the supervisorial districts of the county so that the supervisorial districts shall be substantially equal in population as required by the United States Constitution;"

**WHEREAS**, the Elections Code requires that the Board adopt an ordinance or pass a resolution amending supervisorial districts no later than December 15, 2021;

**WHEREAS**, at the Board of Supervisors meetings on January 5, March 16, April 20, and June 22, 2021, the Board received briefings from County staff and heard public testimony about the redistricting process and federal and state redistricting criteria, including the California Elections Code, the Voting Rights Act and the United States Constitution;

**WHEREAS**, the Board held public hearings on July 20, October 26, November 19, and November 30, 2021, to receive public testimony relating to redistricting criteria and communities of interest, and directed staff and the County's demographic consultant to prepare draft district plans for consideration;

**WHEREAS**, County staff conducted public outreach by way of print, radio and digital advertisements in English and Spanish, sent outreach toolkits to community organizations, issued press releases about the process, and conducted informational meetings for community organizations. During the public hearings substantial public comment was received on redistricting criteria and communities of interest;

**WHEREAS**, the Board received and considered voluminous written correspondence relating to redistricting options, and members of the public submitted various maps containing many districting proposals;

**WHEREAS**, at the November 19 and November 30, 2021, public hearings, the Board received a presentation on several draft maps prepared by County staff and reviewed by the County's demographic consultant for compliance with applicable laws and standards and additional maps submitted by the public, including a map numbered 74786 and also referred to as the "Richard Patton Rev. 1 Map" (attached hereto as Exhibit "A" and hereinafter referred to as the "Preferred Map");

**WHEREAS**, at its November 30, 2021, meeting the Board directed the inclusion of additional refinements to the Preferred Map and directed that the Preferred Map be presented to the Board for adoption by an Ordinance introduced on December 7, 2021, and adopted on December 14, 2021;

**WHEREAS**, at each of the public hearings on redistricting, including the November 19 and 30, 2021 hearings, which each lasted longer than eight hours, the Board heard testimony relating to "communities of interest," which led the Board to reach determinations about communities of interest on the Preferred Map relevant to San Luis Obispo supervisorial voting districts as required under federal and state law;

**WHEREAS**, the Board of Supervisors finds as follows:

A. *The districts are geographically contiguous.* The districts are arrayed in a simple and logical form without any islands and minimal intrusions from the area of one district into another.

B. *To the extent practicable, the Preferred Map respects the geographic integrity of local neighborhoods and local communities of interest.* The communities of interest do not include relationships with political parties, incumbents, or political candidates. The Board heard many hours of testimony about what constitute communities of interest in the public eye. A significant public sentiment that served as a core underpinning of the Preferred Map was a preference for minimizing the division of the City of San Luis Obispo ("SLO") into several districts, as has occurred previously under prior law. The population, density, and location of SLO (in particular its role as host to California Polytechnic State University) give it a distinct identity, which have previously been subject to division into two or more districts. The "Preferred Map" redraws district lines to better align with this important community of interest in SLO and most other County municipalities. The Board of Supervisors received some submissions from the public concerning political demographics and effect of political parties, or incumbents, or political candidates, but did not take such information into account or consider such data in its decision on the Preferred Map. The Board of Supervisors did not use political data to draw the map, nor did the Board of Supervisors look at current locations of current supervisor residences.

C. *The Preferred map respects the geographic integrity of cities and census designated places, with divisions in those cities and places minimized.* As indicated above, a key factor in the public

support for the Preferred Map was its conversion of the denser, more urban population of SLO into largely one district. Beyond SLO, the Preferred Map also respects in large part the jurisdictional boundaries of the County's other cities, in particular the larger population centers in Atascadero and Pismo Beach.

D. *The districts are easily identifiable and understandable by residents.* The districts in the Preferred Map form a relatively simple pattern, with three in a north-to-south configuration on the west and two in a north-to-south configuration on the east. District 3, which includes most of SLO, lies at the hub of the five districts, as it does in terms of its geographic, economic, and social center of the County.

E. *To the extent practicable, the districts are geographically compact.* Their configurations for the most part are compact, simple shapes, with nearby populations included in the same districts.

F. *The districts are balanced in terms of total population and voting age population.* The districts are well within the one-person/one-vote deviations permitted under federal and state voting rights laws.

**NOW, THEREFORE, BE IT RESOLVED AND ORDERED by the Board of Supervisors of the County of San Luis Obispo, State of California, as follows:**

1. The recitals set forth hereinabove are true, correct, and valid.
2. All information in the staff reports, maps, presentations, Board debate and public testimony referenced above is hereby incorporated and serves as the evidentiary basis for this resolution, these findings, and the Boards' legislative decision.
3. This Resolution is adopted to confirm the findings made by the Board during public hearings conducted pursuant to the provisions of the Fair Maps Act of 2019 as amended in 2020, codified at California Elections Code section 21500 to 21509. Having given consideration to those provisions and applicable decisions of the courts, the Board adjusts, changes, and establishes the boundaries of the supervisorial districts of the County by adopting Ordinance No. 3467 at its public hearing on December 14, 2021.
4. Notwithstanding any other provision herein, and pursuant to California Elections Code section 21506, subdivisions (a) and (b), each of the supervisors in office at the time Ordinance No. 3467 takes effect shall continue in office until the expiration of the full term to which he or she was elected and until his or her successor is qualified, and any vacancy in a term currently underway shall be filled based on the districts in effect at the time the current supervisors were elected.
5. All resolutions, or parts thereof in conflict with this resolution are hereby repealed.

Upon motion of Supervisor Peschong, seconded by Supervisor Arnold, and on the following roll call vote, to-wit:

AYES: Supervisors Peschong, Arnold, and Chairperson Compton  
NOES: Supervisors Gibson and Ortiz-Legg  
ABSENT: None  
ABSTAINING: None

the foregoing resolution if hereby adopted on the 14<sup>th</sup> day of December, 2021.

*John Compton*  
Chairperson of the Board of Supervisors  
County of San Luis Obispo, State of California

ATTEST:

WADE HORTON,  
Ex-Officio Clerk of the Board of Supervisors

By: *A. N. Christensen*  
Deputy Clerk

[SEAL]

APPROVED AS TO FORM AND LEGAL EFFECT:

By: /s/ Rita L. Neal  
RITA L. NEAL  
County Counsel

Dated: December 7, 2021

**STATE OF CALIFORNIA ) ss.**  
**COUNTY OF SAN LUIS OBISPO)**

I, **WADE HORTON**, Ex-Officio Clerk of the Board of Supervisors thereof, do hereby certify the foregoing to be a full, true and correct copy of an order entered in the minutes of said Board of Supervisors, and now remaining of record in my office.

Witness, my hand and seal of said Board of Supervisors on December 28, 2021.

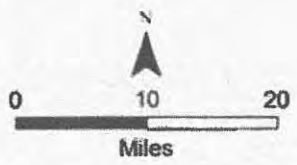
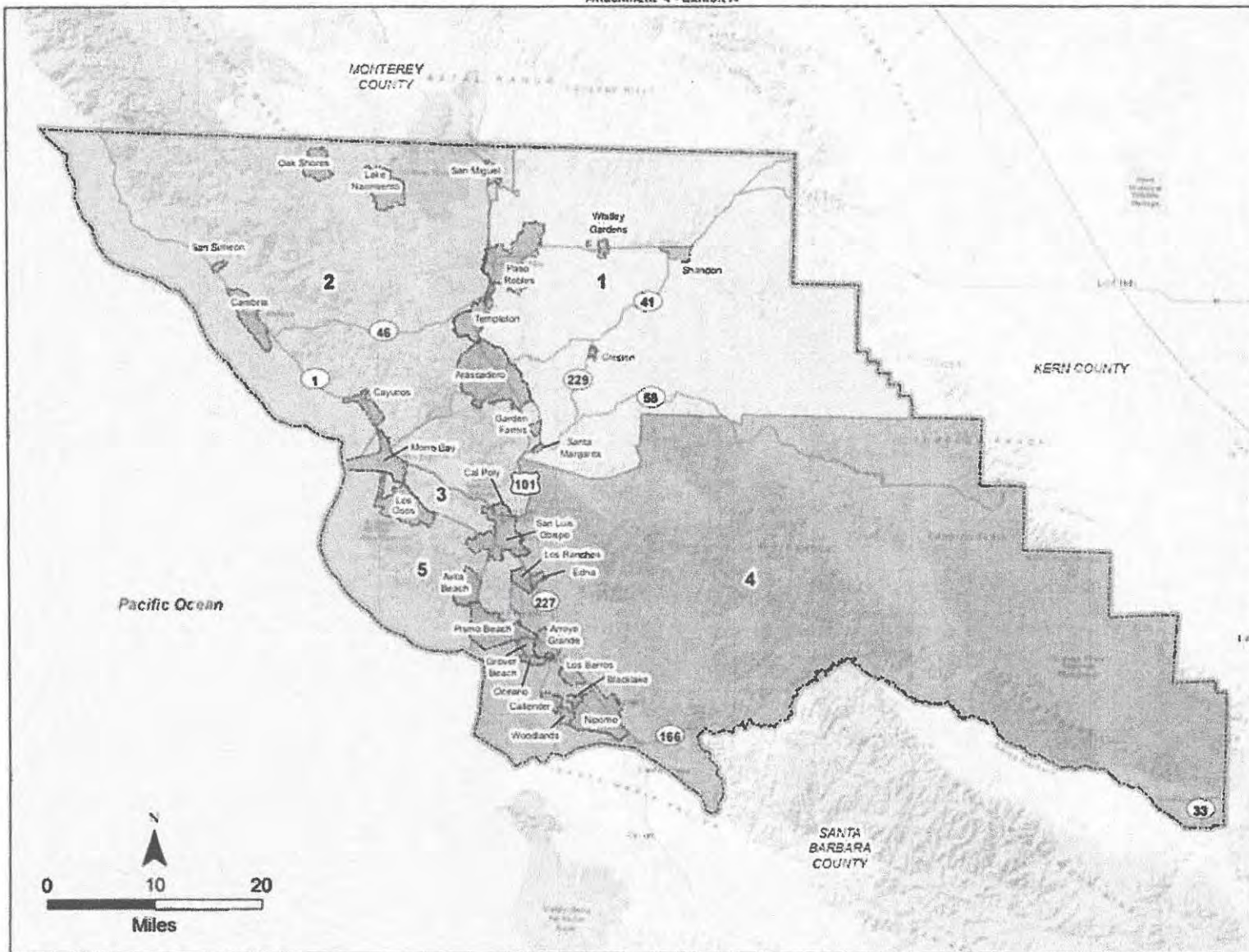
**WADE HORTON,**  
Ex-Officio Clerk of the Board of Supervisors

By: *A. N. Christensen*  
Deputy Clerk

**EXHIBIT A**

**[MAP OF ADOPTED DISTRICT LINES]**





**2021 San Luis Obispo County Supervisorial Districts**

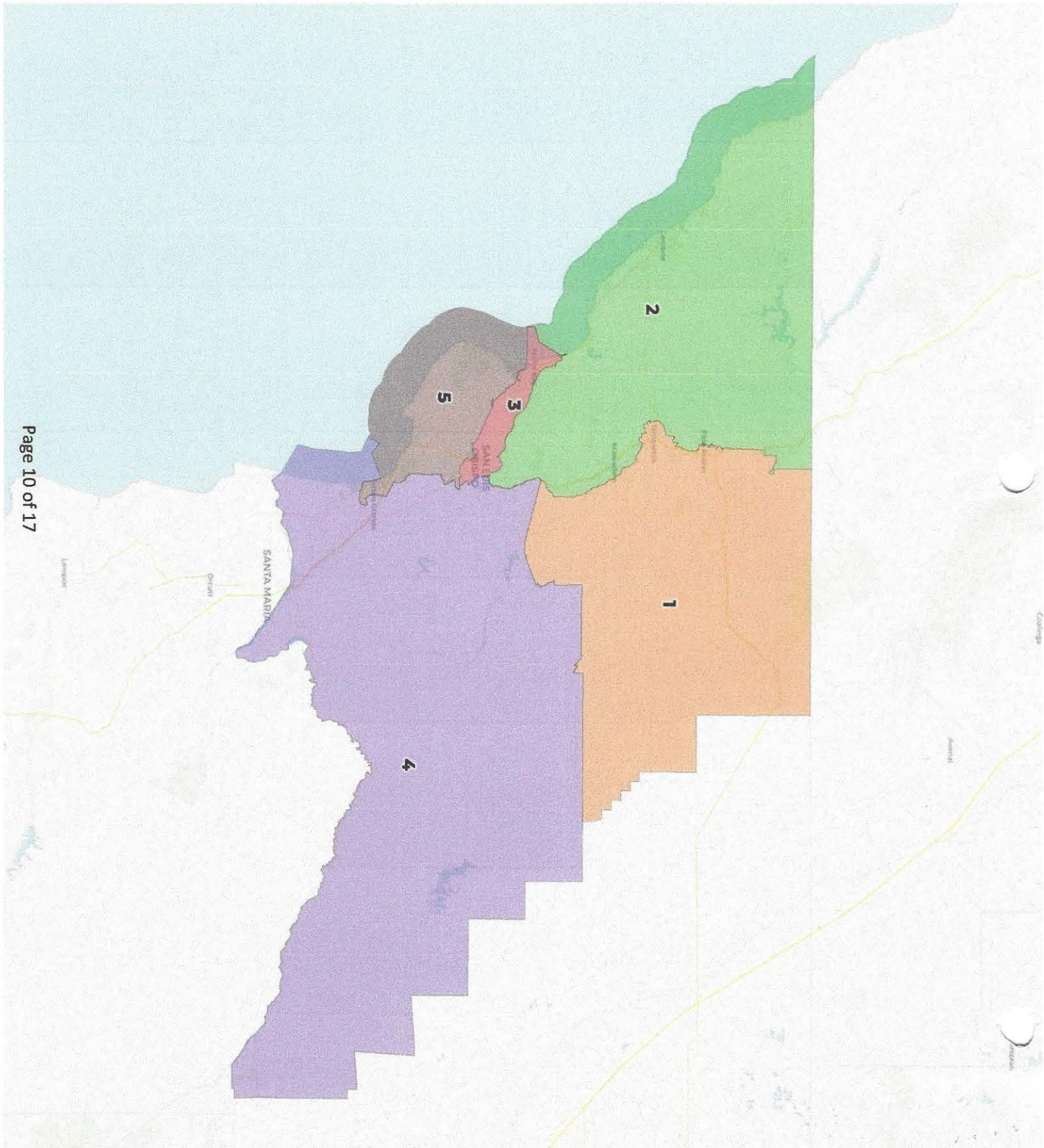
**Legend**

- San Luis Obispo County Boundary
- Freeways and Highways
- City/Town Boundary
- Supervisorial District Boundaries**
- District 1
- District 2
- District 3
- District 4
- District 5

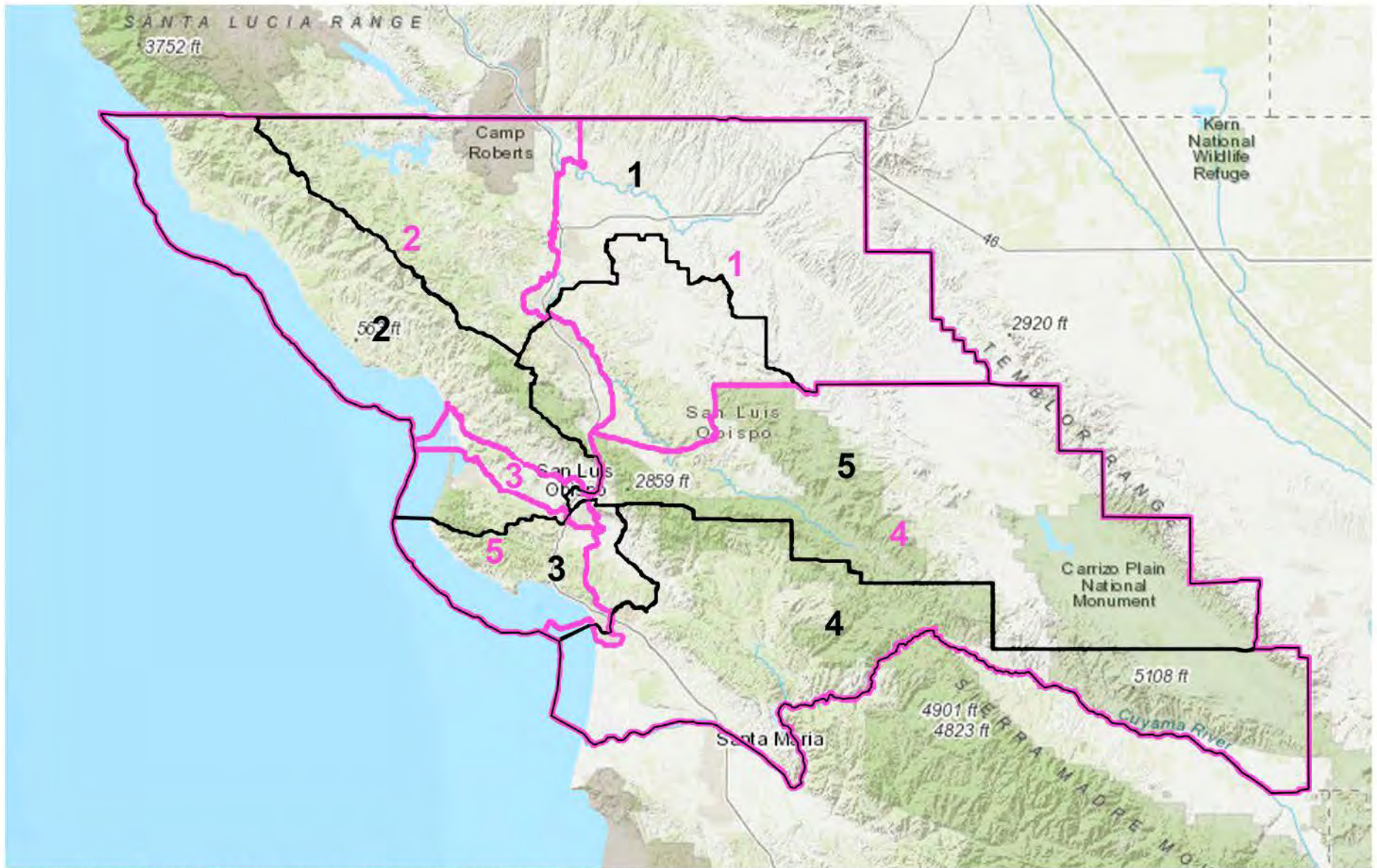
District	Population	Deviation
1	55,880	0.07%
2	53,304	-4.55%
3	56,045	0.36%
4	56,465	1.11%
5	57,522	3.01%

NOTE: This map is a graphical representation of the Census Data Tracts and Blocks listed for each district. The listing of Census Data shall be paramount in any discrepancy between this map and that data listing.

**CERTIFIED BY**  
**COUNTY SURVEYOR**  
  
 EDWARD M. READING, PLS 0081  
 12/3/2021



# **EXHIBIT C**



source: <https://slocounty.maps.arcgis.com/apps/instant/lookup/index.html?appid=a95291a8daba4aafb15d7ea61f5c602c>

## SLO County Supervisorial District Maps, 2011 & 2021

### LEGEND

- 2011 District boundaries
- 2021 District boundaries