
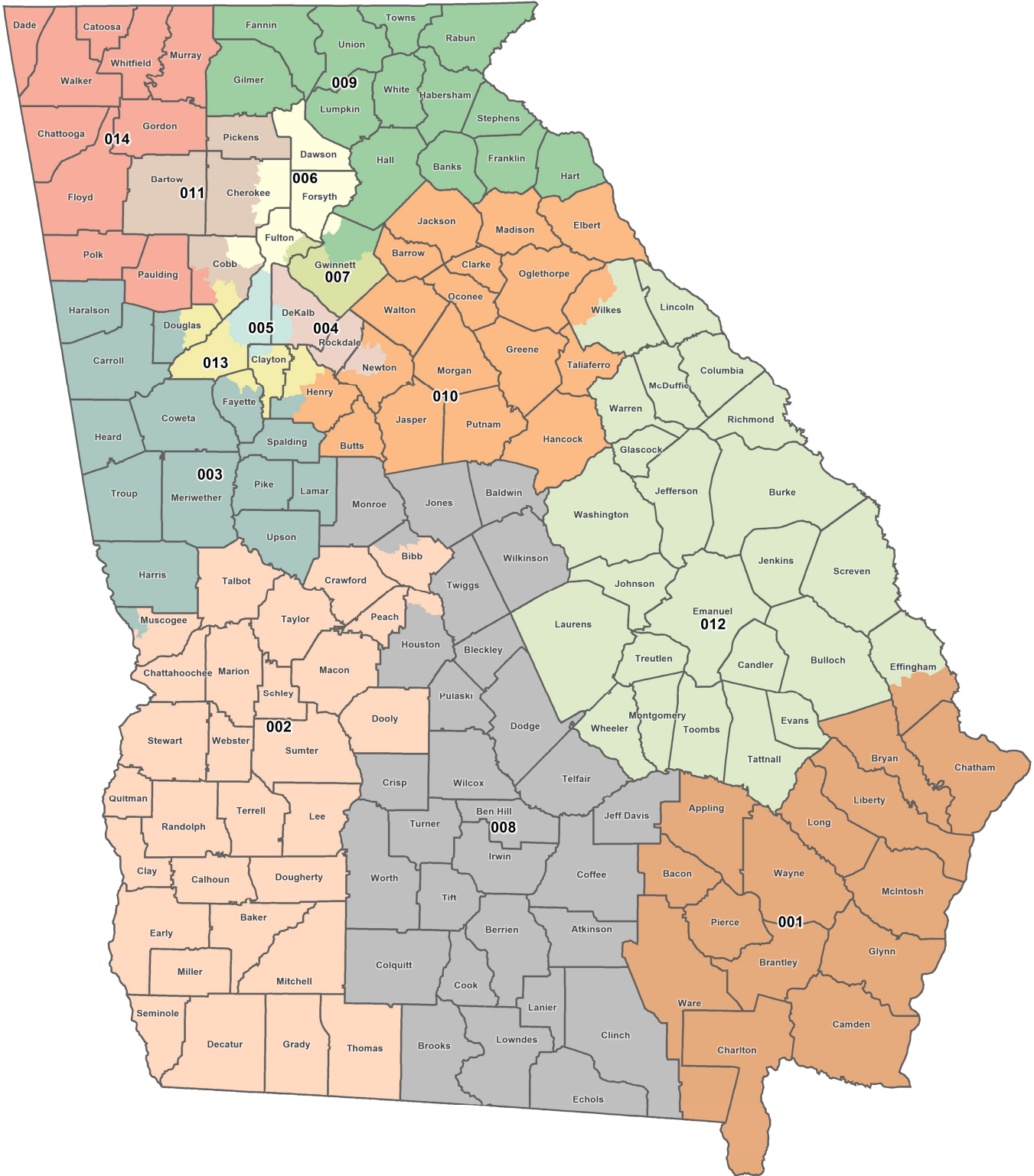


Congressional Districts of Georgia- 2022


Client: State
Plan: Congress-prop1-2021
Type: Congress



Legislative and Congressional
Reapportionment Office
Georgia General Assembly
Suite 407 Coverdell Legislative Office Bldg.

©2021 CALIPER

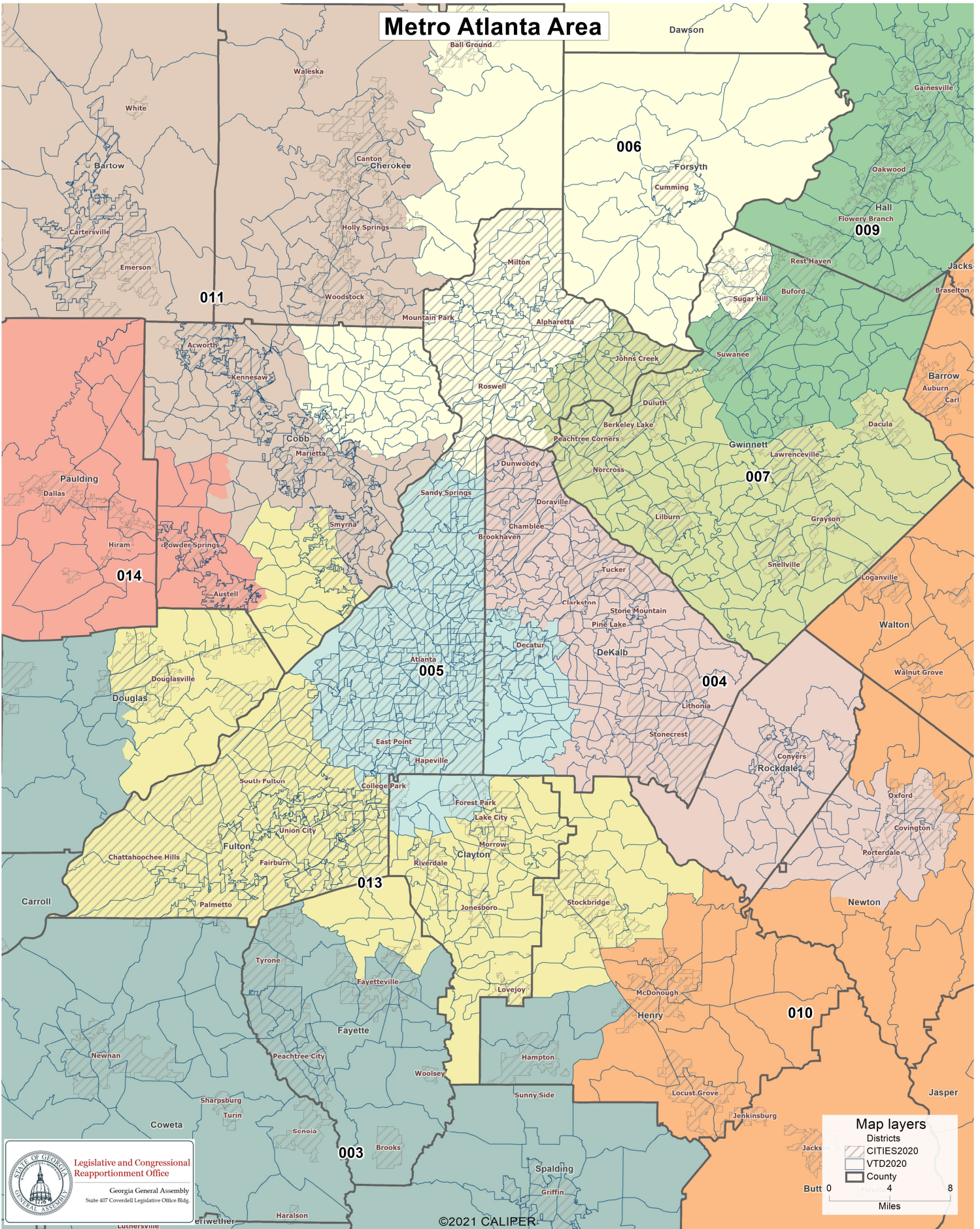
Map layers
Districts
County



Miles

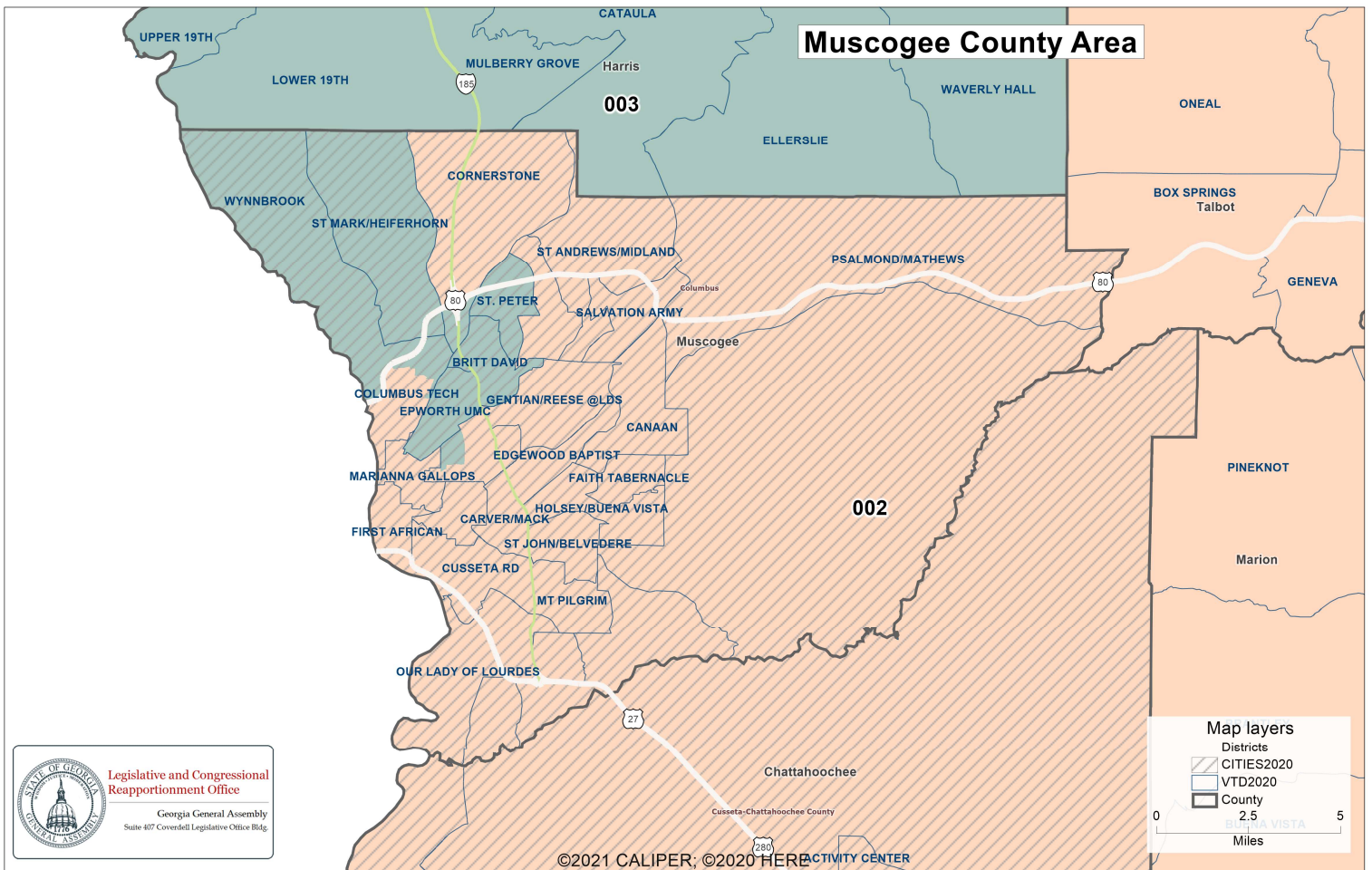
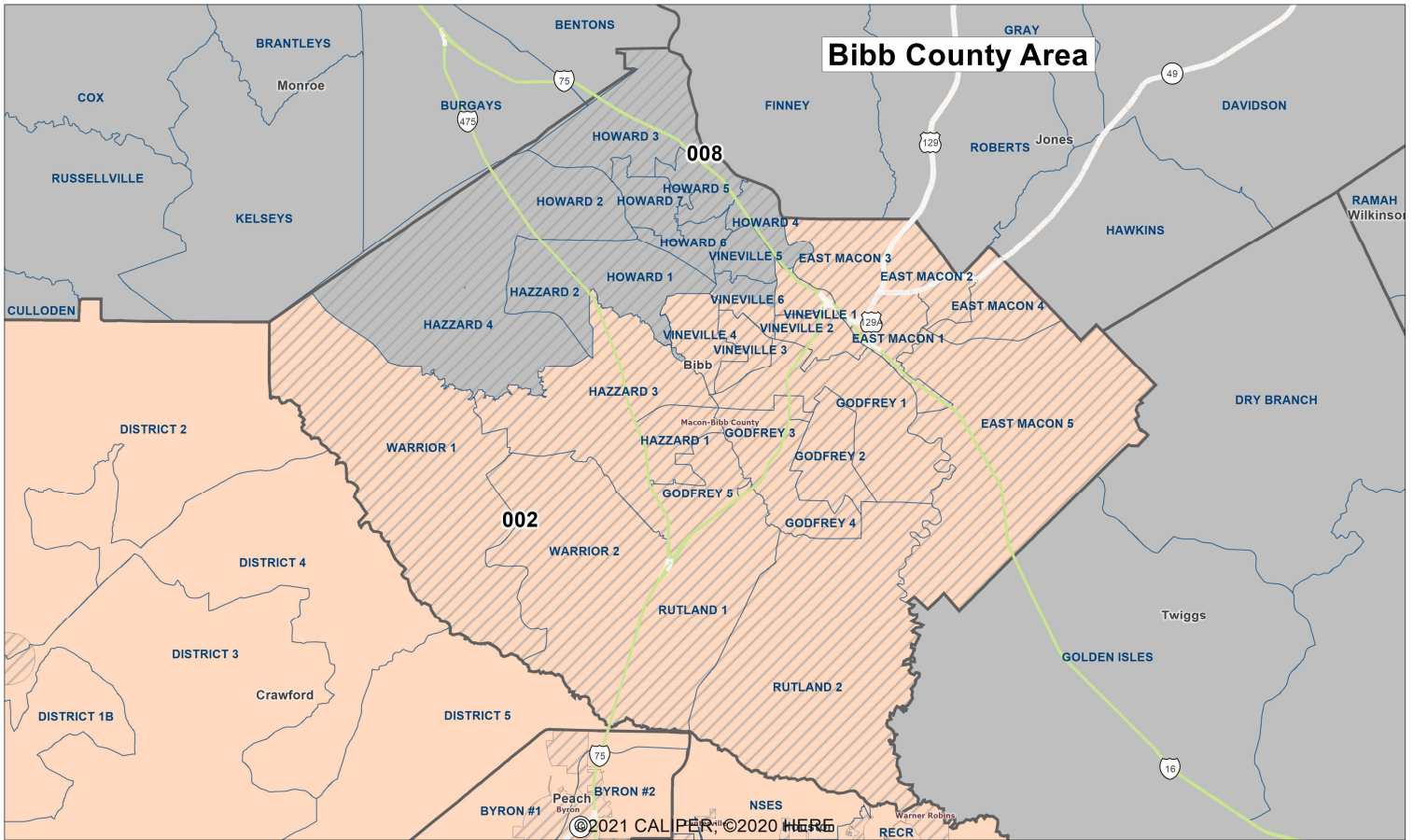
Congressional Districts of Georgia- 2022

Client: State
Plan: Congress-prop1-2021
Type: Congress



Congressional Districts of Georgia- 2022

Client: State
 Plan: Congress-prop1-2021
 Type: Congress



Map layers

- Districts
- CITIES2020
- VTD2020
- County

0 2.5 5 Miles

Population Summary

Summary Statistics:

Population Range:	765,135 to 765,137
Ratio Range:	0.00
Absolute Range:	-1 to 1
Absolute Overall Range:	2
Relative Range:	0.00% to 0.00%
Relative Overall Range:	0.00%
Absolute Mean Deviation:	0.71
Relative Mean Deviation:	0.00%
Standard Deviation:	0.80

District	Population	Deviation	% Devn.	[18+ _Pop]	[% 18+ _Pop]	[% NH_Wht]	[% NH_Blkl	[% Hispanic Origin]	[% NH_Asn]	[% NH_Ind]	[% NH_Hwn]	[% NH_Oth]	[% NH_2+ Races]
001	765,137	1	0.00%	589,266	77.01%	57.59%	27.54%	7.75%	2.19%	0.24%	0.16%	0.44%	4.1%
002	765,137	1	0.00%	587,555	76.79%	39.94%	49.03%	5.95%	1.34%	0.21%	0.1%	0.34%	3.09%
003	765,136	0	0.00%	586,319	76.63%	64.37%	22.61%	6.31%	2.09%	0.21%	0.04%	0.47%	3.91%
004	765,135	-1	0.00%	589,470	77.04%	25.82%	52.19%	11.63%	6.13%	0.16%	0.04%	0.65%	3.39%
005	765,137	1	0.00%	621,515	81.23%	35.79%	48.53%	7.38%	4.09%	0.16%	0.04%	0.52%	3.49%
006	765,136	0	0.00%	574,797	75.12%	63.7%	8.58%	10.23%	12.4%	0.16%	0.04%	0.69%	4.21%
007	765,137	1	0.00%	566,934	74.1%	29.52%	28.11%	23.77%	14.26%	0.16%	0.04%	0.69%	3.45%
008	765,136	0	0.00%	585,857	76.57%	57.91%	29.72%	7.17%	1.56%	0.19%	0.05%	0.31%	3.09%
009	765,137	1	0.00%	592,520	77.44%	64.7%	9.72%	15.39%	5.95%	0.2%	0.04%	0.42%	3.59%
010	765,135	-1	0.00%	588,874	76.96%	63.58%	22.12%	7.66%	2.26%	0.17%	0.04%	0.53%	3.63%
011	765,137	1	0.00%	595,201	77.79%	61.33%	16.33%	13.04%	3.76%	0.19%	0.04%	0.82%	4.49%
012	765,136	0	0.00%	588,119	76.86%	52.13%	36.12%	5.63%	1.83%	0.21%	0.11%	0.36%	3.61%
013	765,137	1	0.00%	574,789	75.12%	16.35%	64.26%	12.23%	3.17%	0.18%	0.05%	0.66%	3.1%
014	765,135	-1	0.00%	579,058	75.68%	68.07%	13.58%	12.69%	1.14%	0.22%	0.05%	0.4%	3.85%

Total: 10,711,908

Ideal District: 765,136

Population Summary

Summary Statistics:

Population Range:	765,135 to 765,137
Ratio Range:	0.00
Absolute Range:	-1 to 1
Absolute Overall Range:	2
Relative Range:	0.00% to 0.00%
Relative Overall Range:	0.00%
Absolute Mean Deviation:	0.71
Relative Mean Deviation:	0.00%
Standard Deviation:	0.80

District	Population	Deviation	% Devn.	[18+_Pop]	[% 18+_Pop]	[% NH18+_Wht]	[% NH18+_Blk]	[% H18+_Pop]	[% NH18+_Asn]	[% NH18+_Ind]	[% NH18+_Hwn]	[% NH18+_Oth]	[% NH18+_2+ Races]
001	765,137	1	0.00%	589,266	77.01%	60.41%	26.44%	6.78%	2.36%	0.26%	0.14%	0.37%	3.24%
002	765,137	1	0.00%	587,555	76.79%	42.73%	47.62%	5.12%	1.41%	0.23%	0.09%	0.28%	2.53%
003	765,136	0	0.00%	586,319	76.63%	66.83%	22%	5.33%	2.08%	0.22%	0.04%	0.38%	3.11%
004	765,135	-1	0.00%	589,470	77.04%	28.25%	51.79%	10.12%	6.09%	0.16%	0.04%	0.58%	2.96%
005	765,137	1	0.00%	621,515	81.23%	37.92%	47.14%	6.67%	4.53%	0.16%	0.04%	0.48%	3.07%
006	765,136	0	0.00%	574,797	75.12%	66.63%	8.61%	9.11%	11.44%	0.14%	0.04%	0.63%	3.41%
007	765,137	1	0.00%	566,934	74.1%	32.78%	27.35%	21.27%	14.97%	0.16%	0.04%	0.59%	2.85%
008	765,136	0	0.00%	585,857	76.57%	60.52%	28.84%	6.1%	1.6%	0.2%	0.05%	0.25%	2.43%
009	765,137	1	0.00%	592,520	77.44%	68.29%	9.37%	12.89%	5.94%	0.21%	0.03%	0.34%	2.92%
010	765,135	-1	0.00%	588,874	76.96%	66.2%	21.34%	6.51%	2.3%	0.19%	0.03%	0.46%	2.98%
011	765,137	1	0.00%	595,201	77.79%	63.99%	16.25%	11.22%	3.82%	0.2%	0.04%	0.75%	3.73%
012	765,136	0	0.00%	588,119	76.86%	54.65%	35.06%	4.87%	1.95%	0.22%	0.1%	0.3%	2.86%
013	765,137	1	0.00%	574,789	75.12%	18.82%	63.75%	10.52%	3.38%	0.19%	0.05%	0.61%	2.68%
014	765,135	-1	0.00%	579,058	75.68%	71.33%	13.14%	10.58%	1.17%	0.23%	0.04%	0.32%	3.2%

Total: 10,711,908

Ideal District: 765,136